

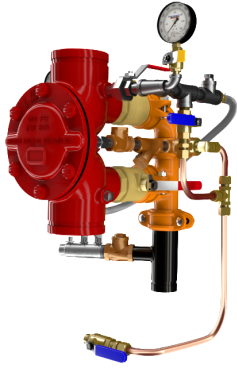
**DDV DIAPHRAGM  
 DELUGE  
 ELECTRIC TRIM**

- See Bulletins 551
- DDV Electric-Uses 175 PSI Solenoid Valve

Description	Part Number	Short Code	List Price
<b>MODEL DDV DELUGE VALVES FULLY ASSEMBLED - ELECTRIC TRIM</b>			
1-1/2" Groove/Groove (ANSI/AWWA C606)	6507002000	.	\$ 9,060.83
1-1/2" Flange/Flange Class 150 (ASME B16.5)	6507102000		\$ 9,966.90
1-1/2" Flange/Flange Class 300 (ASME B16.5)	6507202000		\$ 9,966.90
1-1/2" Flange/Flange PN16 (ISO 7005-2)	6507302000		\$ 9,966.90
1-1/2" NPT Thread/Thread (ANSI/ASME B1.20.1)	6507502000		\$ 9,966.90
1-1/2" ISO7-1 Thread/Thread	6507602000		\$ 9,966.90
2" Groove/Groove (ANSI/AWWA C606)	6507022000		\$ 9,060.83
2" Flange/Flange Class 150 (ASME B16.5)	6507122000		\$ 9,966.90
2" Flange/Flange Class 300 (ASME B16.5)	6507222000		\$ 9,966.90
2" Flange/Flange PN16 (ISO 7005-2)	6507322000		\$ 9,966.90
2" NPT Thread/Thread (ANSI/ASME B1.20.1)	6507522000		\$ 9,966.90
2" ISO7-1 Thread/Thread	6507622000		\$ 9,966.90
2-1/2" Groove/Groove (ANSI/AWWA C606)	6507012000		\$ 10,570.97
2-1/2" Flange/Flange Class 150 (ASME B16.5)	6507112000		\$ 11,628.07
2-1/2" Flange/Flange Class 300 (ASME B16.5)	6507212000		\$ 11,628.07
2-1/2" Flange/Flange PN16 (ISO 7005-2)	6507312000		\$ 11,628.07
2-1/2" NPT Thread/Thread (ANSI/ASME B1.20.1)	6507512000		\$ 11,628.07
2-1/2" ISO7-1 Thread/Thread	6507612000		\$ 11,628.07
76MM Groove/Groove (ANSI/AWWA C606)	6507072000		\$ 10,570.97
3" Groove/Groove (ANSI/AWWA C606)	6507032000		\$ 10,570.97
3" Flange/Flange Class 150 (ASME B16.5)	6507132000		\$ 11,628.07
3" Flange/Flange Class 300 (ASME B16.5)	6507232000		\$ 11,628.07
3" Flange/Flange PN16 (ISO 7005-2)	6507332000		\$ 11,628.07
3" NPT Thread/Thread (ANSI/ASME B1.20.1)	6507532000		\$ 11,628.07
3" ISO7-1 Thread/Thread	6507632000		\$ 11,628.07
4" Groove/Groove (ANSI/AWWA C606)	6507042000		\$ 12,836.18
4" Flange/Flange Class 150 (ASME B16.5)	6507142000		\$ 14,119.79
4" Flange/Flange Class 300 (ASME B16.5)	6507242000		\$ 14,119.79
4" Flange/Flange PN16 (ISO 7005-2)	6507342000		\$ 14,119.79
6" Groove/Groove (ANSI/AWWA C606)	6507062000		\$ 16,611.52
6" Flange/Flange Class 150 (ASME B16.5)	6507162000		\$ 18,272.66
6" Flange/Flange Class 300 (ASME B16.5)	6507262000		\$ 18,272.66
6" Flange/Flange PN16 (ISO 7005-2)	6507362000		\$ 18,272.66
165MM Groove/Groove (ANSI/AWWA C606)	6507052000		\$ 16,611.52
8" Groove/Groove (ANSI/AWWA C606)	6507082000		\$ 34,956.90
8" Flange/Flange Class 150 (ASME B16.5)	6507182000		\$ 38,452.59
8" Flange/Flange/Class 300 (ASME B16.5)	6507282000		\$ 38,452.59
8" Flange/Flange PN16 (ISO 7005-2)	6507382000		\$ 38,452.59

**Notes:**

Base trim does not include drain trim, alarm test line, or control valve. Please see the last page of the DDV section for optional trim components.



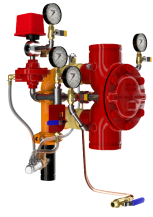
**DDV DIAPHRAGM  
 DELUGE WET  
 PILOT LINE**

- See Bulletin 551

Description	Part Number	Short Code	List Price
<b>MODEL DDV DELUGE VALVES FULLY ASSEMBLED - WET PILOT TRIM</b>			
1-1/2" Groove/Groove (ANSI/AWWA C606)	6507000000		\$ 7,550.69
1-1/2" Flange/Flange Class 150 (ASME B16.5)	6507100000		\$ 8,305.76
1-1/2" Flange/Flange Class 300 (ASME B16.5)	6507200000		\$ 8,305.76
1-1/2" Flange/Flange PN16 (ISO 7005-2)	6507300000		\$ 8,305.76
1-1/2" NPT Thread/Thread (ANSI/ASME B1.20.1)	6507500000		\$ 8,305.76
1-1/2" ISO7-1 Thread/Thread	6507600000		\$ 8,305.76
2" Groove/Groove (ANSI/AWWA C606)	6507020000		\$ 7,550.69
2" Flange/Flange Class 150 (ASME B16.5)	6507120000		\$ 8,305.76
2" Flange/Flange Class 300 (ASME B16.5)	6507220000		\$ 8,305.76
2" Flange/Flange PN16 (ISO 7005-2)	6507320000		\$ 8,305.76
2" NPT Thread/Thread (ANSI/ASME B1.20.1)	6507520000		\$ 8,305.76
2" ISO7-1 Thread/Thread	6507620000		\$ 8,305.76
2-1/2" Groove/Groove (ANSI/AWWA C606)	6507010000		\$ 8,305.76
2-1/2" Flange/Flange Class 150 (ASME B16.5)	6507110000		\$ 9,136.34
2-1/2" Flange/Flange Class 300 (ASME B16.5)	6507210000		\$ 9,136.34
2-1/2" Flange/Flange PN16 (ISO 7005-2)	6507310000		\$ 9,136.34
2-1/2" NPT Thread/Thread (ANSI/ASME B1.20.1)	6507510000		\$ 9,136.34
2-1/2" ISO7-1 Thread/Thread	6507610000		\$ 9,136.34
76MM Groove/Groove (ANSI/AWWA C606)	6507070000		\$ 8,305.76
3" Groove/Groove (ANSI/AWWA C606)	6507030000		\$ 8,305.76
3" Flange/Flange Class 150 (ASME B16.5)	6507130000		\$ 9,136.34
3" Flange/Flange Class 300 (ASME B16.5)	6507230000		\$ 9,136.34
3" Flange/Flange PN16 (ISO 7005-2)	6507330000		\$ 9,136.34
3" NPT Thread/Thread (ANSI/ASME B1.20.1)	6507530000		\$ 9,136.34
3" ISO7-1 Thread/Thread	6507630000		\$ 9,136.34
4" Groove/Groove (ANSI/AWWA C606)	6507040000		\$ 9,815.89
4" Flange/Flange Class 150 (ASME B16.5)	6507140000		\$ 10,797.49
4" Flange/Flange Class 300 (ASME B16.5)	6507240000		\$ 10,797.49
4" Flange/Flange PN16 (ISO 7005-2)	6507340000		\$ 10,797.49
6" Groove/Groove (ANSI/AWWA C606)	6507060000		\$ 12,081.10
6" Flange/Flange Class 150 (ASME B16.5)	6507160000		\$ 13,289.21
6" Flange/Flange Class 300 (ASME B16.5)	6507260000		\$ 13,289.21
6" Flange/Flange PN16 (ISO 7005-2)	6507360000		\$ 13,289.21
165MM Groove/Groove (ANSI/AWWA C606)	6507050000		\$ 12,081.10
8" Groove/Groove (ANSI/AWWA C606)	6507080000		\$ 26,567.24
8" Flange/Flange Class 150 (ASME B16.5)	6507180000		\$ 29,223.96
8" Flange/Flange Class 300 (ASME B16.5)	6507280000		\$ 29,223.96
8" Flange/Flange PN16 (ISO 7005-2)	6507380000		\$ 29,223.96

**Notes:**

Base trim does not include drain trim, alarm test line, or control valve. Please see the last page of the DDV section for optional trim components.



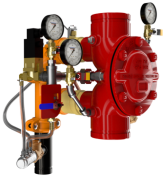
**DDV DIAPHRAGM  
 DELUGE DRY  
 PILOT LINE**

- See Bulletin 551

Description	Part Number	Short Code	List Price
<b>MODEL DDV DELUGE VALVES FULLY ASSEMBLED - DRY PILOT TRIM</b>			
1-1/2" Groove/Groove (ANSI/AWWA C606)	6507001000		\$ 12,081.10
1-1/2" Flange/Flange Class 150 (ASME B16.5)	6507101000		\$ 13,289.21
1-1/2" Flange/Flange Class 300 (ASME B16.5)	6507201000		\$ 13,289.21
1-1/2" Flange/Flange PN16 (ISO 7005-2)	6507301000		\$ 13,289.21
1-1/2" NPT Thread/Thread (ANSI/ASME B1.20.1)	6507501000		\$ 13,289.21
1-1/2" ISO7-1 Thread/Thread	6507601000		\$ 13,289.21
2" Groove/Groove (ANSI/AWWA C606)	6507021000		\$ 12,081.10
2" Flange/Flange Class 150 (ASME B16.5)	6507121000		\$ 13,289.21
2" Flange/Flange Class 300 (ASME B16.5)	6507221000		\$ 13,289.21
2" Flange/Flange PN16 (ISO 7005-2)	6507321000		\$ 13,289.21
2" NPT Thread/Thread (ANSI/ASME B1.20.1)	6507521000		\$ 13,289.21
2" ISO7-1 Thread/Thread	6507621000		\$ 13,289.21
2-1/2" Groove/Groove (ANSI/AWWA C606)	6507011000		\$ 14,346.31
2-1/2" Flange/Flange Class 150 (ASME B16.5)	6507111000		\$ 15,780.94
2-1/2" Flange/Flange Class 300 (ASME B16.5)	6507211000		\$ 15,780.94
2-1/2" Flange/Flange PN16 (ISO 7005-2)	6507311000		\$ 15,780.94
2-1/2" NPT Thread/Thread (ANSI/ASME B1.20.1)	6507511000		\$ 15,780.94
2-1/2" ISO7-1 Thread/Thread	6507611000		\$ 15,780.94
76MM Groove/Groove (ANSI/AWWA C606)	6507071000		\$ 14,346.31
3" Groove/Groove (ANSI/AWWA C606)	6507031000		\$ 14,346.31
3" Flange/Flange Class 150 (ASME B16.5)	6507131000		\$ 15,780.94
3" Flange/Flange Class 300 (ASME B16.5)	6507231000		\$ 15,780.94
3" Flange/Flange PN16 (ISO 7005-2)	6507331000		\$ 15,780.94
3" NPT Thread/Thread (ANSI/ASME B1.20.1)	6507531000		\$ 15,780.94
3" ISO7-1 Thread/Thread	6507631000		\$ 15,780.94
4" Groove/Groove (ANSI/AWWA C606)	6507041000		\$ 16,611.52
4" Flange/Flange Class 150 (ASME B16.5)	6507141000		\$ 18,272.66
4" Flange/Flange Class 300 (ASME B16.5)	6507241000		\$ 18,272.66
4" Flange/Flange PN16 (ISO 7005-2)	6507341000		\$ 18,272.66
6" Groove/Groove (ANSI/AWWA C606)	6507061000		\$ 19,631.80
6" Flange/Flange Class 150 (ASME B16.5)	6507161000		\$ 21,594.97
6" Flange/Flange Class 300 (ASME B16.5)	6507261000		\$ 21,594.97
6" Flange/Flange PN16 (ISO 7005-2)	6507361000		\$ 21,594.97
165MM Groove/Groove (ANSI/AWWA C606)	6507051000		\$ 19,631.80
8" Groove/Groove (ANSI/AWWA C606)	6507081000		\$ 34,956.90
8" Flange/Flange Class 150 (ASME B16.5)	6507181000		\$ 38,452.59
8" Flange/Flange Class 300 (ASME B16.5)	6507281000		\$ 38,452.59
8" Flange/Flange PN16 (ISO 7005-2)	6507381000		\$ 38,452.59

**Notes:**

Base trim does not include drain trim, alarm test line, or control valve. Please see the last page of the DDV section for optional trim components.



## DDV DIAPHRAGM DELUGE REMOTE RESET

- See Bulletin 550

Description	Part Number	Short Code	List Price
<b>MODEL DDV DELUGE VALVE - REMOTE RESET</b>			
1-1/2" Groove/Groove (ANSI/AWWA C606)	6507003000		\$ 12,081.10
1-1/2" Flange/Flange Class 150 (ASME B16.5)	6507103000		\$ 13,289.21
1-1/2" Flange/Flange Class 300 (ASME B16.5)	6507203000		\$ 13,289.21
1-1/2" Flange/Flange PN16 (ISO 7005-2)	6507303000		\$ 13,289.21
1-1/2" NPT Thread/Thread (ANSI/ASME B1.20.1)	6507503000		\$ 13,289.21
1-1/2" ISO7-1 Thread/Thread	6507603000		\$ 13,289.21
2" Groove/Groove (ANSI/AWWA C606)	6507023000		\$ 12,081.10
2" Flange/Flange Class 150 (ASME B16.5)	6507123000		\$ 13,289.21
2" Flange/Flange Class 300 (ASME B16.5)	6507223000		\$ 13,289.21
2" Flange/Flange PN16 (ISO 7005-2)	6507323000		\$ 13,289.21
2" NPT Thread/Thread (ANSI/ASME B1.20.1)	6507523000		\$ 13,289.21
2" ISO7-1 Thread/Thread	6507623000		\$ 13,289.21
2-1/2" Groove/Groove (ANSI/AWWA C606)	6507013000		\$ 15,101.38
2-1/2" Flange/Flange Class 150 (ASME B16.5)	6507113000		\$ 16,611.52
2-1/2" Flange/Flange Class 300 (ASME B16.5)	6507213000		\$ 16,611.52
2-1/2" Flange/Flange PN16 (ISO 7005-2)	6507313000		\$ 16,611.52
2-1/2" NPT Thread/Thread (ANSI/ASME B1.20.1)	6507513000		\$ 16,611.52
2-1/2" ISO7-1 Thread/Thread	6507613000		\$ 16,611.52
76MM Groove/Groove (ANSI/AWWA C606)	6507073000		\$ 15,101.38
3" Groove/Groove (ANSI/AWWA C606)	6507033000		\$ 15,101.38
3" Flange/Flange Class 150 (ASME B16.5)	6507133000		\$ 16,611.52
3" Flange/Flange Class 300 (ASME B16.5)	6507233000		\$ 16,611.52
3" Flange/Flange PN16 (ISO 7005-2)	6507333000		\$ 16,611.52
3" NPT Thread/Thread (ANSI/ASME B1.20.1)	6507533000		\$ 16,611.52
3" ISO7-1 Thread/Thread	6507633000		\$ 16,611.52
4" Groove/Groove (ANSI/AWWA C606)	6507043000		\$ 16,611.52
4" Flange/Flange Class 150 (ASME B16.5)	6507143000		\$ 18,272.66
4" Flange/Flange Class 300 (ASME B16.5)	6507243000		\$ 18,272.66
4" Flange/Flange PN16 (ISO 7005-2)	6507343000		\$ 18,272.66
6" Groove/Groove (ANSI/AWWA C606)	6507063000		\$ 19,631.80
6" Flange/Flange Class 150 (ASME B16.5)	6507163000		\$ 21,594.97
6" Flange/Flange Class 300 (ASME B16.5)	6507263000		\$ 21,594.97
6" Flange/Flange PN16 (ISO 7005-2)	6507363000		\$ 21,594.97
165MM Groove/Groove (ANSI/AWWA C606)	6507053000		\$ 19,631.80
8" Groove/Groove (ANSI/AWWA C606)	6507083000		\$ 41,948.28
8" Flange/Flange Class 150 (ASME B16.5)	6507183000		\$ 46,143.11
8" Flange/Flange Class 300 (ASME B16.5)	6507283000		\$ 46,143.11
8" Flange/Flange PN16 (ISO 7005-2)	6507383000		\$ 46,143.11

**Notes:**

Base trim does not include drain trim, alarm test line, or control valve. Please see the last page of the DDV section for optional trim components.



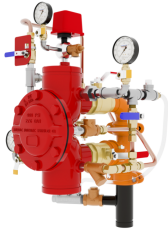
**DDV DIAPHRAGM  
 DELUGE REMOTE  
 RESET PRESSURE  
 REGULATING**

- See Bulletin 550

Description	Part Number	Short Code	List Price
<b>MODEL DDV DELUGE VALVE - REMOTE RESET PRESSURE REGULATING</b>			
1-1/2" Groove/Groove (ANSI/AWWA C606)	6507007000		\$ 16,611.52
1-1/2" Flange/Flange Class 150 (ASME B16.5)	6507107000		\$ 18,272.66
1-1/2" Flange/Flange Class 300 (ASME B16.5)	6507207000		\$ 18,272.66
1-1/2" Flange/Flange PN16 (ISO 7005-2)	6507307000		\$ 18,272.66
1-1/2" NPT Thread/Thread (ANSI/ASME B1.20.1)	6507507000		\$ 18,272.66
1-1/2" ISO7-1 Thread/Thread	6507607000		\$ 18,272.66
2" Groove/Groove (ANSI/AWWA C606)	6507027000		\$ 16,611.52
2" Flange/Flange Class 150 (ASME B16.5)	6507127000		\$ 18,272.66
2" Flange/Flange Class 300 (ASME B16.5)	6507227000		\$ 18,272.66
2" Flange/Flange PN16 (ISO 7005-2)	6507327000		\$ 18,272.66
2" NPT Thread/Thread (ANSI/ASME B1.20.1)	6507527000		\$ 18,272.66
2" ISO7-1 Thread/Thread	6507627000		\$ 18,272.66
2-1/2" Groove/Groove (ANSI/AWWA C606)	6507017000		\$ 18,121.65
2-1/2" Flange/Flange Class 150 (ASME B16.5)	6507117000		\$ 19,933.83
2-1/2" Flange/Flange Class 300 (ASME B16.5)	6507217000		\$ 19,933.83
2-1/2" Flange/Flange PN16 (ISO 7005-2)	6507317000		\$ 19,933.83
2-1/2" NPT Thread/Thread (ANSI/ASME B1.20.1)	6507517000		\$ 19,933.83
2-1/2" ISO7-1 Thread/Thread	6507617000		\$ 19,933.83
76MM Groove/Groove (ANSI/AWWA C606)	6507077000		\$ 18,121.65
3" Groove/Groove (ANSI/AWWA C606)	6507037000		\$ 18,121.65
3" Flange/Flange Class 150 (ASME B16.5)	6507137000		\$ 19,933.83
3" Flange/Flange Class 300 (ASME B16.5)	6507237000		\$ 19,933.83
3" Flange/Flange PN16 (ISO 7005-2)	6507337000		\$ 19,933.83
3" NPT Thread/Thread (ANSI/ASME B1.20.1)	6507537000		\$ 19,933.83
3" ISO7-1 Thread/Thread	6507637000		\$ 19,933.83
4" Groove/Groove (ANSI/AWWA C606)	6507047000		\$ 19,631.80
4" Flange/Flange Class 150 (ASME B16.5)	6507147000		\$ 21,594.97
4" Flange/Flange Class 300 (ASME B16.5)	6507247000		\$ 21,594.97
4" Flange/Flange PN16 (ISO 7005-2)	6507347000		\$ 21,594.97
6" Groove/Groove (ANSI/AWWA C606)	6507067000		\$ 22,652.07
6" Flange/Flange Class 150 (ASME B16.5)	6507167000		\$ 24,917.28
6" Flange/Flange Class 300 (ASME B16.5)	6507267000		\$ 24,917.28
6" Flange/Flange PN16 (ISO 7005-2)	6507367000		\$ 24,917.28
165MM Groove/Groove (ANSI/AWWA C606)	6507057000		\$ 22,652.07

**Notes:**

Base trim does not include drain trim, alarm test line, or control valve. Please see the last page of the DDV section for optional trim components.



**DDV DIAPHRAGM  
 DELUGE DRY  
 PILOT PRESSURE  
 REGULATING**

- See Bulletin 550
- Dry Pilot Pressure Regulating

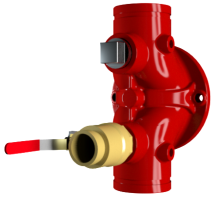
Description	Part Number	Short Code	List Price
<b>MODEL DDV DELUGE VALVE - DRY PILOT PRESSURE REGULATING</b>			
1-1/2" Groove/Groove (ANSI/AWWA C606)	6507005000		\$ 15,101.38
1-1/2" Flange/Flange Class 150 (ASME B16.5)	6507105000		\$ 16,611.52
1-1/2" Flange/Flange Class 300 (ASME B16.5)	6507205000		\$ 16,611.52
1-1/2" Flange/Flange PN16 (ISO 7005-2)	6507305000		\$ 16,611.52
1-1/2" NPT Thread/Thread (ANSI/ASME B1.20.1)	6507505000		\$ 16,611.52
1-1/2" ISO7-1 Thread/Thread	6507605000		\$ 16,611.52
2" Groove/Groove (ANSI/AWWA C606)	6507025000		\$ 15,101.38
2" Flange/Flange Class 150 (ASME B16.5)	6507125000		\$ 16,611.52
2" Flange/Flange Class 300 (ASME B16.5)	6507225000		\$ 16,611.52
2" Flange/Flange PN16 (ISO 7005-2)	6507325000		\$ 16,611.52
2" NPT Thread/Thread (ANSI/ASME B1.20.1)	6507525000		\$ 16,611.52
2" ISO7-1 Thread/Thread	6507625000		\$ 16,611.52
2-1/2" Groove/Groove (ANSI/AWWA C606)	6507015000		\$ 17,366.59
2-1/2" Flange/Flange Class 150 (ASME B16.5)	6507115000		\$ 19,103.25
2-1/2" Flange/Flange Class 300 (ASME B16.5)	6507215000		\$ 19,103.25
2-1/2" Flange/Flange PN16 (ISO 7005-2)	6507315000		\$ 19,103.25
2-1/2" NPT Thread/Thread (ANSI/ASME B1.20.1)	6507515000		\$ 19,103.25
2-1/2" ISO7-1 Thread/Thread	6507615000		\$ 19,103.25
76MM Groove/Groove (ANSI/AWWA C606)	6507075000		\$ 17,366.59
3" Groove/Groove (ANSI/AWWA C606)	6507035000		\$ 17,366.59
3" Flange/Flange Class 150 (ASME B16.5)	6507135000		\$ 19,103.25
3" Flange/Flange Class 300 (ASME B16.5)	6507235000		\$ 19,103.25
3" Flange/Flange PN16 (ISO 7005-2)	6507335000		\$ 19,103.25
3" NPT Thread/Thread (ANSI/ASME B1.20.1)	6507535000		\$ 19,103.25
3" ISO7-1 Thread/Thread	6507635000		\$ 19,103.25
4" Groove/Groove (ANSI/AWWA C606)	6507045000		\$ 19,631.80
4" Flange/Flange Class 150 (ASME B16.5)	6507145000		\$ 21,594.97
4" Flange/Flange Class 300 (ASME B16.5)	6507245000		\$ 21,594.97
4" Flange/Flange PN16 (ISO 7005-2)	6507345000		\$ 21,594.97
6" Groove/Groove (ANSI/AWWA C606)	6507065000		\$ 22,652.07
6" Flange/Flange Class 150 (ASME B16.5)	6507165000		\$ 24,917.28
6" Flange/Flange Class 300 (ASME B16.5)	6507265000		\$ 24,917.28
6" Flange/Flange PN16 (ISO 7005-2)	6507365000		\$ 24,917.28
165MM Groove/Groove (ANSI/AWWA C606)	6507055000		\$ 22,652.07

**Notes:**

Base trim does not include drain trim, alarm test line, or control valve. Please see the last page of the DDV section for optional trim components.

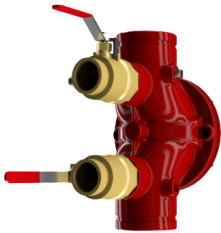
## DDV DIAPHRAGM DELUGE VALVE

- Bulletin 550

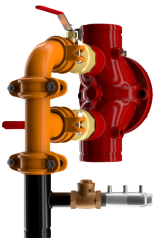


## LOWER BALL VALVE

- Lower & Upper Ball Valve Option X 2



## DUAL BALL VALVE



## FULL DRAIN VALVE

Description	Part Number	Short Code	List Price
<b>DRAIN TRIM OPTIONS- SELECT ONE</b>			
Lower Ball Valve - 1-1/2" & 2"	77000300		\$ 226.52
Lower Ball Valve - 2-1/2", 3"	77000299		\$ 528.54
Lower Ball Valve - 4", 6", 8"	9884011D		\$ 906.08
Lower & Upper Ball Valve -1 -1/2" & 2"	77000300		\$ 226.52
Lower & Upper Ball Valve - 2-1/2", 3"	77000299		\$ 528.54
Lower & Upper Ball Valve - 4", 6", 8"	9884011D		\$ 906.08
Full Drain Trim - 1-1/2" & 2"	77037003		\$ 981.60
Full Drain Trim - 2-1/2", 3"	77037004		\$ 1,661.14
Full Drain Trim - 4", 6", 8"	77037002		\$ 3,473.32
<b>OPTIONAL TRIM</b>			
DDV Alarm Test Kit MTO	6501040001		\$ 604.07
600 psi Gauge	98248005		\$ 150.99
<b>CONTROL VALVES (UPPER &amp; LOWER)</b>			
Control Valve - 2-1/2"	77000302		\$ 1,359.13
Control Valve - 3"	77000303		\$ 1,359.13
Control Valve - 4"	77000304		\$ 1,510.14
Control Valve - 6"	77000306		\$ 1,963.18
S/A Control Valve 8"	77000308		\$ 2,754.61
Control Valve w/Inlet Spool - 2-1/2"	77000271		\$ 1,812.17
Control Valve w/Inlet Spool - 3"	77000273		\$ 1,812.17
Control Valve w/Inlet Spool - 4"	77000274		\$ 1,963.18
Control Valve w/Inlet Spool - 6"	77000276		\$ 2,718.24
DDV S/A Control Valve 8" Winlet Spool	77000278		\$ 3,804.71

## DELUGE VALVES

- **MODEL DDX DELUGE VALVE**
- Electric, Wet Pilot Line, and Dry Pilot Line Trims
- See Bulletin 519

Description	Part Number	Short Code	List Price
<b>MODEL DDX - DELUGE VALVE ONLY (GROOVED/GROOVED)</b>			
2,DELUGE-DRY,DDX,GXG RED	6103022001	2DDXR	\$ 8,279.85
2,1/2,DELUGE-DRY,DDX,GXG RED	6103022501	25DDXR	\$ 8,279.85
3,DELUGE-DRY,DDX,(80MM),GXG RED	6103030001	3DDXR	\$ 8,547.89
Model DDX 76MM	6103027600	76DDXMM	\$ 8,279.85
4,DELUGE-DRY,DDX,(100MM),GXG RED	6103040030	4DDXR	\$ 8,736.20
6,DELUGE-DRY,DDX,(150MM),GXG RED	6103060030	6DDXR	\$ 10,739.56
Model DDX 165MM	6103060028	165DDXMM	\$ 10,739.56
8,DELUGE-DRY,DDX,(200MM),GXG RED	6103080003	8DDXR	\$ 17,840.47
<b>MODEL DDX - DELUGE VALVE ONLY (FLANGE/FLANGE)</b>			
4,DELUGE-DRY,DDX,FL/FL 150 RED	6103040047	4DDXFR	\$ 8,736.20
6,DELUGE-DRY,DDX,FL/FL,150 RED	6103060047	6DDXFR	\$ 10,739.56
8,DELUGE-DRY,DDX,FL/FL,150 RED	6103080018	8DDXFR	\$ 17,840.47
<b>MODEL DDX - DELUGE VALVE ONLY (FLANGE/GROOVED)</b>			
4,DELUGE-DRY,DDX,FL/GE,150 RED	6103040046	4DDXFGR	\$ 8,736.20
6,DELUGE-DRY,DDX FL/GE,150 RED	6103060048	6DDXFGR	\$ 10,739.56
165MM / PN16	6103060052	165DDXFG	\$ 10,739.56
<b>DELUGE TRIM ONLY — SEGMENTALLY ASSEMBLED</b>			
Wet Pilot Line 2", 2-1/2" & 3"	6520702010	25DDXWPN	\$ 5,272.58
Wet Pilot Line 4", 6" & 8"	6520703010	4DDXWPN	\$ 5,272.58
Dry Pilot Line 2", 2-1/2" & 3"	6520802010	25DDXDPPN	\$ 7,898.52
Dry Pilot Line 4", 6" & 8"	6520803010	4DDXDPPN	\$ 7,898.52
Electric Release 2", 2-1/2" & 3"	6520902110	25DDXEPN	\$ 7,381.13
Electric Release 4", 6" & 8"	6520903110	4DDXEPN	\$ 7,381.13
<b>DELUGE TRIM ONLY — INDIVIDUAL PARTS</b>			
Wet Pilot Line 2", 2-1/2" & 3"	6520700010	25DDXWLN	\$ 5,002.86
Wet Pilot Line 4", 6" & 8"	6520701010	4DDXWLN	\$ 5,002.86
Dry Pilot Line 2", 2-1/2" & 3"	6520800010	25DDXDPLN	\$ 7,398.09
Dry Pilot Line 4", 6" & 8"	6520801010	4DDXDPLN	\$ 7,398.09
Electric Release 2", 2-1/2" & 3"	6520900110	25DDXELN	\$ 6,850.17
Electric Release 4", 6" & 8"	6520901110	4DDXELN	\$ 6,850.17

**Notes:**

All DDX trim includes Potter Pressure Switch





## DELUGE VALVES

- **MODEL DDX DELUGE VALVE**
- Electric, Wet Pilot Line, and Dry Pilot Line Trims
- See Bulletin 519

Description	Part Number	Short Code	List Price
<b>MODEL DDX - DELUGE VALVES FULLY ASSEMBLED - ELECTRIC TRIM</b>			
2" Electric Release	6522904110	2DDXFEN	\$ 17,533.08
2" Electric Release w/Control Valve	6522908110	2DDXFEVN	\$ 19,421.81
2-1/2" Electric Release	6521904110	25DDXFEN	\$ 17,533.08
2-1/2" Electric Release w/Control Valve	6521908110	25DDXFEVN	\$ 19,421.81
3" Electric Release	6523904110	3DDXFEN	\$ 18,072.46
3" Electric Release w/Control Valve	6523908110	3DDXFEVN	\$ 19,690.65
76MM Electric Release	6525905110	76DDXFEN	\$ 17,533.08
4" Electric Release	6524904110	4DDXFEN	\$ 18,093.02
4" Electric Release w/Control Valve	6524908110	4DDXFEVN	\$ 19,966.32
6" Electric Release	6526904110	6DDXFEN	\$ 20,113.59
6" Electric Release w/Control Valve	6526908110	6DDXFEVN	\$ 21,919.78
165MM, DDX, Valve, w/Electric	6527905110	165DDXFVN	\$ 20,113.59
8" Electric Release	6528904110	8DDXFEN	\$ 27,038.34
8" Electric Release w/Control Valve	6528908110	8DDXFEVN	\$ 30,675.03
<b>MODEL DDX - DELUGE VALVES FULLY ASSEMBLED - WET PILOT LINE TRIM</b>			
2" Wet Pilot Line	6522704010	2DDXFVN	\$ 15,106.67
2" Wet Pilot Line w/Control Valve	6522708010	2DDXFVNV	\$ 16,993.69
2-1/2" Wet Pilot Line	6521704010	25DDXFVN	\$ 15,106.67
2-1/2" Wet Pilot Line w/Control Valve	6521708010	25DDXFVNV	\$ 16,993.69
3" Wet Pilot Line	6523704010	3DDXFVN	\$ 15,646.06
3" Wet Pilot Line w/Control Valve	6523708010	3DDXFVNV	\$ 17,533.08
76MM Wet Pilot Line	6525705010	76DDXFVN	\$ 15,106.67
4" Wet Pilot Line	6524704010	4DDXFVN	\$ 16,021.05
4" Wet Pilot Line w/Control Valve	6524708010	4DDXFVNV	\$ 17,896.09
6" Wet Pilot Line	6526704010	6DDXFVN	\$ 18,041.65
6" Wet Pilot Line w/Control Valve	6526708010	6DDXFVNV	\$ 20,670.10
165MM, DDX, Valve, w/Wet Pilot	6527705010	165DDXFVN	\$ 18,041.42
8" Wet Pilot Line	6528704010	8DDXFVN	\$ 26,295.17
8" Wet Pilot Line w/Control Valve	6528708010	8DDXFVNV	\$ 31,738.74
<b>MODEL DDX - DELUGE VALVES FULLY ASSEMBLED - DRY PILOT LINE TRIM</b>			
2" Dry Pilot Line	6522804010	2DDXFDPN	\$ 17,803.63
2" Dry Pilot Line w/Control Valve	6522808010	2DDXFDPVN	\$ 19,690.65
2-1/2" Dry Pilot Line	6521804010	25DDXFDPN	\$ 17,803.63
2-1/2" Dry Pilot Line w/Control Valve	6521808010	25DDXFDPVN	\$ 19,690.65
3" Dry Pilot Line	6523804010	3DDXFDPN	\$ 18,343.03
3" Dry Pilot Line w/Control Valve	6523808010	3DDXFDPVN	\$ 20,230.03
76MM Dry Pilot Line	6525805010	76DDXFDPN	\$ 17,803.63
4" Dry Pilot Line	6524804010	4DDXFDPN	\$ 18,598.15
4" Dry Pilot Line w/Control Valve	6524808010	4DDXFDPVN	\$ 20,474.88
6" Dry Pilot Line	6526804010	6DDXFDPN	\$ 20,620.44
6" Dry Pilot Line w/Control Valve	6526808010	6DDXFDPVN	\$ 23,247.20
165MM, DDX, Valve, w/ Dry Pilot line	6527805010	165DDXFDPN	\$ 20,620.44
8" Dry Pilot Line	6528804010	8DDXFDPN	\$ 27,533.21
8" Dry Pilot Line w/Control Valve	6528808010	8DDXFDPVN	\$ 33,469.92

**Notes:**