

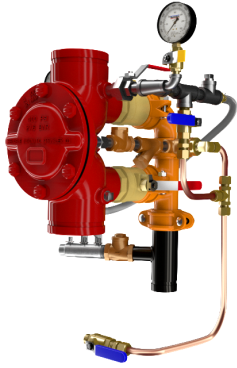
**DDV DIAPHRAGM
 DELUGE
 ELECTRIC TRIM**

- See Bulletins 551
- DDV Electric-Uses 175 PSI Solenoid Valve

Description	Part Number	Short Code	List Price
MODEL DDV DELUGE VALVES FULLY ASSEMBLED - ELECTRIC TRIM			
1-1/2" Groove/Groove (ANSI/AWWA C606)	6507002000		S\$12,244.37
1-1/2" Flange/Flange Class 150 (ASME B16.5)	6507102000		S\$13,468.79
1-1/2" Flange/Flange Class 300 (ASME B16.5)	6507202000		S\$13,468.79
1-1/2" Flange/Flange PN16 (ISO 7005-2)	6507302000		S\$13,468.79
1-1/2" NPT Thread/Thread (ANSI/ASME B1.20.1)	6507502000		S\$13,468.79
1-1/2" ISO7-1 Thread/Thread	6507602000		S\$13,468.79
2" Groove/Groove (ANSI/AWWA C606)	6507022000		S\$12,244.37
2" Flange/Flange Class 150 (ASME B16.5)	6507122000		S\$13,468.79
2" Flange/Flange Class 300 (ASME B16.5)	6507222000		S\$13,468.79
2" Flange/Flange PN16 (ISO 7005-2)	6507322000		S\$13,468.79
2" NPT Thread/Thread (ANSI/ASME B1.20.1)	6507522000		S\$13,468.79
2" ISO7-1 Thread/Thread	6507622000		S\$13,468.79
2-1/2" Groove/Groove (ANSI/AWWA C606)	6507012000		S\$14,285.09
2-1/2" Flange/Flange Class 150 (ASME B16.5)	6507112000		S\$15,713.60
2-1/2" Flange/Flange Class 300 (ASME B16.5)	6507212000		S\$15,713.60
2-1/2" Flange/Flange PN16 (ISO 7005-2)	6507312000		S\$15,713.60
2-1/2" NPT Thread/Thread (ANSI/ASME B1.20.1)	6507512000		S\$15,713.60
2-1/2" ISO7-1 Thread/Thread	6507612000		S\$15,713.60
76MM Groove/Groove (ANSI/AWWA C606)	6507072000		S\$14,285.09
3" Groove/Groove (ANSI/AWWA C606)	6507032000		S\$14,285.09
3" Flange/Flange Class 150 (ASME B16.5)	6507132000		S\$15,713.60
3" Flange/Flange Class 300 (ASME B16.5)	6507232000		S\$15,713.60
3" Flange/Flange PN16 (ISO 7005-2)	6507332000		S\$15,713.60
3" NPT Thread/Thread (ANSI/ASME B1.20.1)	6507532000		S\$15,713.60
3" ISO7-1 Thread/Thread	6507632000		S\$15,713.60
4" Groove/Groove (ANSI/AWWA C606)	6507042000		S\$17,346.18
4" Flange/Flange Class 150 (ASME B16.5)	6507142000		S\$19,080.79
4" Flange/Flange Class 300 (ASME B16.5)	6507242000		S\$19,080.79
4" Flange/Flange PN16 (ISO 7005-2)	6507342000		S\$19,080.79
6" Groove/Groove (ANSI/AWWA C606)	6507062000		S\$22,448.00
6" Flange/Flange Class 150 (ASME B16.5)	6507162000		S\$24,692.79
6" Flange/Flange Class 300 (ASME B16.5)	6507262000		S\$24,692.79
6" Flange/Flange PN16 (ISO 7005-2)	6507362000		S\$24,692.79
165MM Groove/Groove (ANSI/AWWA C606)	6507052000		S\$22,448.00
8" Groove/Groove (ANSI/AWWA C606)	6507082000		S\$47,239.05
8" Flange/Flange Class 150 (ASME B16.5)	6507182000		S\$51,962.96
8" Flange/Flange/Class 300 (ASME B16.5)	6507282000		S\$51,962.96
8" Flange/Flange PN16 (ISO 7005-2)	6507382000		S\$51,962.96

Notes:

Base trim does not include drain trim, alarm test line, or control valve. Please see the last page of the DDV section for optional trim components.



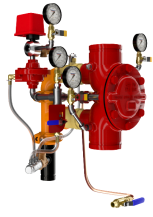
**DDV DIAPHRAGM
 DELUGE WET
 PILOT LINE**

- See Bulletin 551

Description	Part Number	Short Code	List Price
MODEL DDV DELUGE VALVES FULLY ASSEMBLED - WET PILOT TRIM			
1-1/2" Groove/Groove (ANSI/AWWA C606)	650700000		S\$ 10,203.63
1-1/2" Flange/Flange Class 150 (ASME B16.5)	650710000		S\$ 11,224.00
1-1/2" Flange/Flange Class 300 (ASME B16.5)	650720000		S\$ 11,224.00
1-1/2" Flange/Flange PN16 (ISO 7005-2)	650730000		S\$ 11,224.00
1-1/2" NPT Thread/Thread (ANSI/ASME B1.20.1)	650750000		S\$ 11,224.00
1-1/2" ISO7-1 Thread/Thread	650760000		S\$ 11,224.00
2" Groove/Groove (ANSI/AWWA C606)	650702000		S\$ 10,203.63
2" Flange/Flange Class 150 (ASME B16.5)	650712000		S\$ 11,224.00
2" Flange/Flange Class 300 (ASME B16.5)	650722000		S\$ 11,224.00
2" Flange/Flange PN16 (ISO 7005-2)	650732000		S\$ 11,224.00
2" NPT Thread/Thread (ANSI/ASME B1.20.1)	650752000		S\$ 11,224.00
2" ISO7-1 Thread/Thread	650762000		S\$ 11,224.00
2-1/2" Groove/Groove (ANSI/AWWA C606)	650701000		S\$ 11,224.00
2-1/2" Flange/Flange Class 150 (ASME B16.5)	650711000		S\$ 12,346.40
2-1/2" Flange/Flange Class 300 (ASME B16.5)	650721000		S\$ 12,346.40
2-1/2" Flange/Flange PN16 (ISO 7005-2)	650731000		S\$ 12,346.40
2-1/2" NPT Thread/Thread (ANSI/ASME B1.20.1)	650751000		S\$ 12,346.40
2-1/2" ISO7-1 Thread/Thread	650761000		S\$ 12,346.40
76MM Groove/Groove (ANSI/AWWA C606)	650707000		S\$ 11,224.00
3" Groove/Groove (ANSI/AWWA C606)	650703000		S\$ 11,224.00
3" Flange/Flange Class 150 (ASME B16.5)	650713000		S\$ 12,346.40
3" Flange/Flange Class 300 (ASME B16.5)	650723000		S\$ 12,346.40
3" Flange/Flange PN16 (ISO 7005-2)	650733000		S\$ 12,346.40
3" NPT Thread/Thread (ANSI/ASME B1.20.1)	650753000		S\$ 12,346.40
3" ISO7-1 Thread/Thread	650763000		S\$ 12,346.40
4" Groove/Groove (ANSI/AWWA C606)	650704000		S\$ 13,264.72
4" Flange/Flange Class 150 (ASME B16.5)	650714000		S\$ 14,591.20
4" Flange/Flange Class 300 (ASME B16.5)	650724000		S\$ 14,591.20
4" Flange/Flange PN16 (ISO 7005-2)	650734000		S\$ 14,591.20
6" Groove/Groove (ANSI/AWWA C606)	650706000		S\$ 16,325.81
6" Flange/Flange Class 150 (ASME B16.5)	650716000		S\$ 17,958.39
6" Flange/Flange Class 300 (ASME B16.5)	650726000		S\$ 17,958.39
6" Flange/Flange PN16 (ISO 7005-2)	650736000		S\$ 17,958.39
165MM Groove/Groove (ANSI/AWWA C606)	650705000		S\$ 16,325.81
8" Groove/Groove (ANSI/AWWA C606)	650708000		S\$ 35,901.68
8" Flange/Flange Class 150 (ASME B16.5)	650718000		S\$ 39,491.84
8" Flange/Flange Class 300 (ASME B16.5)	650728000		S\$ 39,491.84
8" Flange/Flange PN16 (ISO 7005-2)	650738000		S\$ 39,491.84

Notes:

Base trim does not include drain trim, alarm test line, or control valve. Please see the last page of the DDV section for optional trim components.



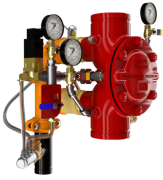
**DDV DIAPHRAGM
 DELUGE DRY
 PILOT LINE**

- See Bulletin 551

Description	Part Number	Short Code	List Price
MODEL DDV DELUGE VALVES FULLY ASSEMBLED - DRY PILOT TRIM			
1-1/2" Groove/Groove (ANSI/AWWA C606)	6507001000		S\$16,325.81
1-1/2" Flange/Flange Class 150 (ASME B16.5)	6507101000		S\$17,958.39
1-1/2" Flange/Flange Class 300 (ASME B16.5)	6507201000		S\$17,958.39
1-1/2" Flange/Flange PN16 (ISO 7005-2)	6507301000		S\$17,958.39
1-1/2" NPT Thread/Thread (ANSI/ASME B1.20.1)	6507501000		S\$17,958.39
1-1/2" ISO7-1 Thread/Thread	6507601000		S\$17,958.39
2" Groove/Groove (ANSI/AWWA C606)	6507021000		S\$16,325.81
2" Flange/Flange Class 150 (ASME B16.5)	6507121000		S\$17,958.39
2" Flange/Flange Class 300 (ASME B16.5)	6507221000		S\$17,958.39
2" Flange/Flange PN16 (ISO 7005-2)	6507321000		S\$17,958.39
2" NPT Thread/Thread (ANSI/ASME B1.20.1)	6507521000		S\$17,958.39
2" ISO7-1 Thread/Thread	6507621000		S\$17,958.39
2-1/2" Groove/Groove (ANSI/AWWA C606)	6507011000		S\$19,386.91
2-1/2" Flange/Flange Class 150 (ASME B16.5)	6507111000		S\$21,325.60
2-1/2" Flange/Flange Class 300 (ASME B16.5)	6507211000		S\$21,325.60
2-1/2" Flange/Flange PN16 (ISO 7005-2)	6507311000		S\$21,325.60
2-1/2" NPT Thread/Thread (ANSI/ASME B1.20.1)	6507511000		S\$21,325.60
2-1/2" ISO7-1 Thread/Thread	6507611000		S\$21,325.60
76MM Groove/Groove (ANSI/AWWA C606)	6507071000		S\$19,386.91
3" Groove/Groove (ANSI/AWWA C606)	6507031000		S\$19,386.91
3" Flange/Flange Class 150 (ASME B16.5)	6507131000		S\$21,325.60
3" Flange/Flange Class 300 (ASME B16.5)	6507231000		S\$21,325.60
3" Flange/Flange PN16 (ISO 7005-2)	6507331000		S\$21,325.60
3" NPT Thread/Thread (ANSI/ASME B1.20.1)	6507531000		S\$21,325.60
3" ISO7-1 Thread/Thread	6507631000		S\$21,325.60
4" Groove/Groove (ANSI/AWWA C606)	6507041000		S\$22,448.00
4" Flange/Flange Class 150 (ASME B16.5)	6507141000		S\$24,692.79
4" Flange/Flange Class 300 (ASME B16.5)	6507241000		S\$24,692.79
4" Flange/Flange PN16 (ISO 7005-2)	6507341000		S\$24,692.79
6" Groove/Groove (ANSI/AWWA C606)	6507061000		S\$26,529.46
6" Flange/Flange Class 150 (ASME B16.5)	6507161000		S\$29,182.39
6" Flange/Flange Class 300 (ASME B16.5)	6507261000		S\$29,182.39
6" Flange/Flange PN16 (ISO 7005-2)	6507361000		S\$29,182.39
165MM Groove/Groove (ANSI/AWWA C606)	6507051000		S\$26,529.46
8" Groove/Groove (ANSI/AWWA C606)	6507081000		S\$47,239.05
8" Flange/Flange Class 150 (ASME B16.5)	6507181000		S\$51,962.96
8" Flange/Flange Class 300 (ASME B16.5)	6507281000		S\$51,962.96
8" Flange/Flange PN16 (ISO 7005-2)	6507381000		S\$51,962.96

Notes:

Base trim does not include drain trim, alarm test line, or control valve. Please see the last page of the DDV section for optional trim components.



**DDV DIAPHRAGM
 DELUGE REMOTE
 RESET**

- See Bulletin 550

Description	Part Number	Short Code	List Price
MODEL DDV DELUGE VALVE - REMOTE RESET			
1-1/2" Groove/Groove (ANSI/AWWA C606)	6507003000		S\$16,325.81
1-1/2" Flange/Flange Class 150 (ASME B16.5)	6507103000		S\$17,958.39
1-1/2" Flange/Flange Class 300 (ASME B16.5)	6507203000		S\$17,958.39
1-1/2" Flange/Flange PN16 (ISO 7005-2)	6507303000		S\$17,958.39
1-1/2" NPT Thread/Thread (ANSI/ASME B1.20.1)	6507503000		S\$17,958.39
1-1/2" ISO7-1 Thread/Thread	6507603000		S\$17,958.39
2" Groove/Groove (ANSI/AWWA C606)	6507023000		S\$16,325.81
2" Flange/Flange Class 150 (ASME B16.5)	6507123000		S\$17,958.39
2" Flange/Flange Class 300 (ASME B16.5)	6507223000		S\$17,958.39
2" Flange/Flange PN16 (ISO 7005-2)	6507323000		S\$17,958.39
2" NPT Thread/Thread (ANSI/ASME B1.20.1)	6507523000		S\$17,958.39
2" ISO7-1 Thread/Thread	6507623000		S\$17,958.39
2-1/2" Groove/Groove (ANSI/AWWA C606)	6507013000		S\$20,407.27
2-1/2" Flange/Flange Class 150 (ASME B16.5)	6507113000		S\$22,448.00
2-1/2" Flange/Flange Class 300 (ASME B16.5)	6507213000		S\$22,448.00
2-1/2" Flange/Flange PN16 (ISO 7005-2)	6507313000		S\$22,448.00
2-1/2" NPT Thread/Thread (ANSI/ASME B1.20.1)	6507513000		S\$22,448.00
2-1/2" ISO7-1 Thread/Thread	6507613000		S\$22,448.00
76MM Groove/Groove (ANSI/AWWA C606)	6507073000		S\$20,407.27
3" Groove/Groove (ANSI/AWWA C606)	6507033000		S\$20,407.27
3" Flange/Flange Class 150 (ASME B16.5)	6507133000		S\$22,448.00
3" Flange/Flange Class 300 (ASME B16.5)	6507233000		S\$22,448.00
3" Flange/Flange PN16 (ISO 7005-2)	6507333000		S\$22,448.00
3" NPT Thread/Thread (ANSI/ASME B1.20.1)	6507533000		S\$22,448.00
3" ISO7-1 Thread/Thread	6507633000		S\$22,448.00
4" Groove/Groove (ANSI/AWWA C606)	6507043000		S\$22,448.00
4" Flange/Flange Class 150 (ASME B16.5)	6507143000		S\$24,692.79
4" Flange/Flange Class 300 (ASME B16.5)	6507243000		S\$24,692.79
4" Flange/Flange PN16 (ISO 7005-2)	6507343000		S\$24,692.79
6" Groove/Groove (ANSI/AWWA C606)	6507063000		S\$26,529.46
6" Flange/Flange Class 150 (ASME B16.5)	6507163000		S\$29,182.39
6" Flange/Flange Class 300 (ASME B16.5)	6507263000		S\$29,182.39
6" Flange/Flange PN16 (ISO 7005-2)	6507363000		S\$29,182.39
165MM Groove/Groove (ANSI/AWWA C606)	6507053000		S\$26,529.46
8" Groove/Groove (ANSI/AWWA C606)	6507083000		S\$56,686.86
8" Flange/Flange Class 150 (ASME B16.5)	6507183000		S\$62,355.55
8" Flange/Flange Class 300 (ASME B16.5)	6507283000		S\$62,355.55
8" Flange/Flange PN16 (ISO 7005-2)	6507383000		S\$62,355.55

Notes:

Base trim does not include drain trim, alarm test line, or control valve. Please see the last page of the DDV section for optional trim components.



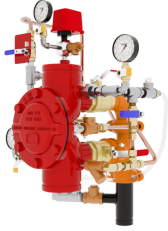
**DDV DIAPHRAGM
 DELUGE REMOTE
 RESET PRESSURE
 REGULATING**

- See Bulletin 550

Description	Part Number	Short Code	List Price
MODEL DDV DELUGE VALVE - REMOTE RESET PRESSURE REGULATING			
1-1/2" Groove/Groove (ANSI/AWWA C606)	6507007000		S\$22,448.00
1-1/2" Flange/Flange Class 150 (ASME B16.5)	6507107000		S\$24,692.79
1-1/2" Flange/Flange Class 300 (ASME B16.5)	6507207000		S\$24,692.79
1-1/2" Flange/Flange PN16 (ISO 7005-2)	6507307000		S\$24,692.79
1-1/2" NPT Thread/Thread (ANSI/ASME B1.20.1)	6507507000		S\$24,692.79
1-1/2" ISO7-1 Thread/Thread	6507607000		S\$24,692.79
2" Groove/Groove (ANSI/AWWA C606)	6507027000		S\$22,448.00
2" Flange/Flange Class 150 (ASME B16.5)	6507127000		S\$24,692.79
2" Flange/Flange Class 300 (ASME B16.5)	6507227000		S\$24,692.79
2" Flange/Flange PN16 (ISO 7005-2)	6507327000		S\$24,692.79
2" NPT Thread/Thread (ANSI/ASME B1.20.1)	6507527000		S\$24,692.79
2" ISO7-1 Thread/Thread	6507627000		S\$24,692.79
2-1/2" Groove/Groove (ANSI/AWWA C606)	6507017000		S\$24,488.72
2-1/2" Flange/Flange Class 150 (ASME B16.5)	6507117000		S\$26,937.60
2-1/2" Flange/Flange Class 300 (ASME B16.5)	6507217000		S\$26,937.60
2-1/2" Flange/Flange PN16 (ISO 7005-2)	6507317000		S\$26,937.60
2-1/2" NPT Thread/Thread (ANSI/ASME B1.20.1)	6507517000		S\$26,937.60
2-1/2" ISO7-1 Thread/Thread	6507617000		S\$26,937.60
76MM Groove/Groove (ANSI/AWWA C606)	6507077000		S\$24,488.72
3" Groove/Groove (ANSI/AWWA C606)	6507037000		S\$24,488.72
3" Flange/Flange Class 150 (ASME B16.5)	6507137000		S\$26,937.60
3" Flange/Flange Class 300 (ASME B16.5)	6507237000		S\$26,937.60
3" Flange/Flange PN16 (ISO 7005-2)	6507337000		S\$26,937.60
3" NPT Thread/Thread (ANSI/ASME B1.20.1)	6507537000		S\$26,937.60
3" ISO7-1 Thread/Thread	6507637000		S\$26,937.60
4" Groove/Groove (ANSI/AWWA C606)	6507047000		S\$26,529.46
4" Flange/Flange Class 150 (ASME B16.5)	6507147000		S\$29,182.39
4" Flange/Flange Class 300 (ASME B16.5)	6507247000		S\$29,182.39
4" Flange/Flange PN16 (ISO 7005-2)	6507347000		S\$29,182.39
6" Groove/Groove (ANSI/AWWA C606)	6507067000		S\$30,610.90
6" Flange/Flange Class 150 (ASME B16.5)	6507167000		S\$33,672.00
6" Flange/Flange Class 300 (ASME B16.5)	6507267000		S\$33,672.00
6" Flange/Flange PN16 (ISO 7005-2)	6507367000		S\$33,672.00
165MM Groove/Groove (ANSI/AWWA C606)	6507057000		S\$30,610.90

Notes:

Base trim does not include drain trim, alarm test line, or control valve. Please see the last page of the DDV section for optional trim components.



**DDV DIAPHRAGM
 DELUGE DRY
 PILOT PRESSURE
 REGULATING**

- See Bulletin 550
- Dry Pilot Pressure Regulating

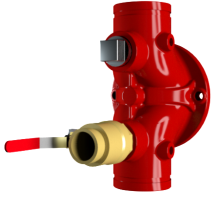
Description	Part Number	Short Code	List Price
MODEL DDV DELUGE VALVE - DRY PILOT PRESSURE REGULATING			
1-1/2" Groove/Groove (ANSI/AWWA C606)	6507005000		S\$20,407.27
1-1/2" Flange/Flange Class 150 (ASME B16.5)	6507105000		S\$22,448.00
1-1/2" Flange/Flange Class 300 (ASME B16.5)	6507205000		S\$22,448.00
1-1/2" Flange/Flange PN16 (ISO 7005-2)	6507305000		S\$22,448.00
1-1/2" NPT Thread/Thread (ANSI/ASME B1.20.1)	6507505000		S\$22,448.00
1-1/2" ISO7-1 Thread/Thread	6507605000		S\$22,448.00
2" Groove/Groove (ANSI/AWWA C606)	6507025000		S\$20,407.27
2" Flange/Flange Class 150 (ASME B16.5)	6507125000		S\$22,448.00
2" Flange/Flange Class 300 (ASME B16.5)	6507225000		S\$22,448.00
2" Flange/Flange PN16 (ISO 7005-2)	6507325000		S\$22,448.00
2" NPT Thread/Thread (ANSI/ASME B1.20.1)	6507525000		S\$22,448.00
2" ISO7-1 Thread/Thread	6507625000		S\$22,448.00
2-1/2" Groove/Groove (ANSI/AWWA C606)	6507015000		S\$23,468.37
2-1/2" Flange/Flange Class 150 (ASME B16.5)	6507115000		S\$25,815.20
2-1/2" Flange/Flange Class 300 (ASME B16.5)	6507215000		S\$25,815.20
2-1/2" Flange/Flange PN16 (ISO 7005-2)	6507315000		S\$25,815.20
2-1/2" NPT Thread/Thread (ANSI/ASME B1.20.1)	6507515000		S\$25,815.20
2-1/2" ISO7-1 Thread/Thread	6507615000		S\$25,815.20
76MM Groove/Groove (ANSI/AWWA C606)	6507075000		S\$23,468.37
3" Groove/Groove (ANSI/AWWA C606)	6507035000		S\$23,468.37
3" Flange/Flange Class 150 (ASME B16.5)	6507135000		S\$25,815.20
3" Flange/Flange Class 300 (ASME B16.5)	6507235000		S\$25,815.20
3" Flange/Flange PN16 (ISO 7005-2)	6507335000		S\$25,815.20
3" NPT Thread/Thread (ANSI/ASME B1.20.1)	6507535000		S\$25,815.20
3" ISO7-1 Thread/Thread	6507635000		S\$25,815.20
4" Groove/Groove (ANSI/AWWA C606)	6507045000		S\$26,529.46
4" Flange/Flange Class 150 (ASME B16.5)	6507145000		S\$29,182.39
4" Flange/Flange Class 300 (ASME B16.5)	6507245000		S\$29,182.39
4" Flange/Flange PN16 (ISO 7005-2)	6507345000		S\$29,182.39
6" Groove/Groove (ANSI/AWWA C606)	6507065000		S\$30,610.90
6" Flange/Flange Class 150 (ASME B16.5)	6507165000		S\$33,672.00
6" Flange/Flange Class 300 (ASME B16.5)	6507265000		S\$33,672.00
6" Flange/Flange PN16 (ISO 7005-2)	6507365000		S\$33,672.00
165MM Groove/Groove (ANSI/AWWA C606)	6507055000		S\$30,610.90

Notes:

Base trim does not include drain trim, alarm test line, or control valve. Please see the last page of the DDV section for optional trim components.

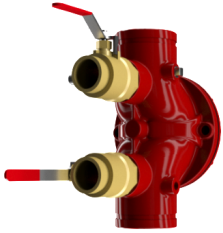
DDV DIAPHRAGM DELUGE VALVE

- Bulletin 550

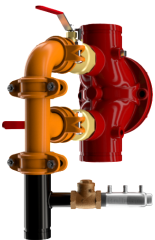


LOWER BALL VALVE

- Lower & Upper Ball Valve Option X 2



DUAL BALL VALVE



FULL DRAIN VALVE

Description	Part Number	Short Code	List Price
DRAIN TRIM OPTIONS- SELECT ONE			
Lower Ball Valve - 1-1/2" & 2"	77000300		S\$ 306.11
Lower Ball Valve - 2-1/2", 3"	77000299		S\$ 714.24
Lower Ball Valve - 4", 6", 8"	9884011D		S\$ 1,224.43
Lower & Upper Ball Valve -1 -1/2" & 2"	77000300		S\$ 306.11
Lower & Upper Ball Valve - 2-1/2", 3"	77000299		S\$ 714.24
Lower & Upper Ball Valve - 4", 6", 8"	9884011D		S\$ 1,224.43
Full Drain Trim - 1-1/2" & 2"	77037003		S\$ 1,326.48
Full Drain Trim - 2-1/2", 3"	77037004		S\$ 2,244.79
Full Drain Trim - 4", 6", 8"	77037002		S\$ 4,693.67
OPTIONAL TRIM			
DDV Alarm Test Kit MTO	6501040001		S\$ 816.30
600 psi Gauge	98248005		S\$ 204.04
CONTROL VALVES (UPPER & LOWER)			
Control Valve - 2-1/2"	77000302		S\$ 1,836.66
Control Valve - 3"	77000303		S\$ 1,836.66
Control Valve - 4"	77000304		S\$ 2,040.72
Control Valve - 6"	77000306		S\$ 2,652.95
S/A Control Valve 8"	77000308		S\$ 3,722.44
Control Valve w/Inlet Spool - 2-1/2"	77000271		S\$ 2,448.88
Control Valve w/Inlet Spool - 3"	77000273		S\$ 2,448.88
Control Valve w/Inlet Spool - 4"	77000274		S\$ 2,652.95
Control Valve w/Inlet Spool - 6"	77000276		S\$ 3,673.30
DDV S/A Control Valve 8" Winlet Spool	77000278		S\$ 5,141.50

DELUGE VALVES

- **MODEL DDX DELUGE VALVE**
- Electric, Wet Pilot Line, and Dry Pilot Line Trims
- See Bulletin 519

Description	Part Number	Short Code	List Price
MODEL DDX - DELUGE VALVE ONLY (GROOVED/GROOVED)			
2,DELUGE-DRY,DDX,GXG RED	6103022001	2DDXR	S\$ 11,188.99
2,1/2,DELUGE-DRY,DDX,GXG RED	6103022501	25DDXR	S\$ 11,188.99
3,DELUGE-DRY,DDX,(80MM),GXG RED	6103030001	3DDXR	S\$ 11,551.20
Model DDX 76MM	6103027600	76DDXMM	S\$ 11,188.99
4,DELUGE-DRY,DDX,(100MM),GXG RED	6103040030	4DDXR	S\$ 11,805.68
6,DELUGE-DRY,DDX,(150MM),GXG RED	6103060030	6DDXR	S\$ 14,512.92
Model DDX 165MM	6103060028	165DDXMM	S\$ 14,512.92
8,DELUGE-DRY,DDX,(200MM),GXG RED	6103080003	8DDXR	S\$ 24,108.74
MODEL DDX - DELUGE VALVE ONLY (FLANGE/FLANGE)			
4,DELUGE-DRY,DDX,FL/FL 150 RED	6103040047	4DDXFR	S\$ 11,805.68
6,DELUGE-DRY,DDX,FL/FL,150 RED	6103060047	6DDXFR	S\$ 14,512.92
8,DELUGE-DRY,DDX,FL/FL,150 RED	6103080018	8DDXFR	S\$ 24,108.74
MODEL DDX - DELUGE VALVE ONLY (FLANGE/GROOVED)			
4,DELUGE-DRY,DDX,FL/GE,150 RED	6103040046	4DDXFG	S\$ 11,805.68
6,DELUGE-DRY,DDX FL/GE,150 RED	6103060048	6DDXFG	S\$ 14,512.92
165MM / PN16	6103060052	165DDXFG	S\$ 14,512.92
DELUGE TRIM ONLY — SEGMENTALLY ASSEMBLED			
Wet Pilot Line 2", 2-1/2" & 3"	6520702010	25DDXWPN	S\$ 7,125.10
Wet Pilot Line 4", 6" & 8"	6520703010	4DDXWPN	S\$ 7,125.10
Dry Pilot Line 2", 2-1/2" & 3"	6520802010	25DDXDPPN	S\$ 10,673.67
Dry Pilot Line 4", 6" & 8"	6520803010	4DDXDPPN	S\$ 10,673.67
Electric Release 2", 2-1/2" & 3"	6520902110	25DDXEPN	S\$ 9,974.50
Electric Release 4", 6" & 8"	6520903110	4DDXEPN	S\$ 9,974.50
DELUGE TRIM ONLY — INDIVIDUAL PARTS			
Wet Pilot Line 2", 2-1/2" & 3"	6520700010	25DDXWLN	S\$ 6,760.61
Wet Pilot Line 4", 6" & 8"	6520701010	4DDXWLN	S\$ 6,760.61
Dry Pilot Line 2", 2-1/2" & 3"	6520800010	25DDXDPLN	S\$ 9,997.42
Dry Pilot Line 4", 6" & 8"	6520801010	4DDXDPLN	S\$ 9,997.42
Electric Release 2", 2-1/2" & 3"	6520900110	25DDXELN	S\$ 9,256.99
Electric Release 4", 6" & 8"	6520901110	4DDXELN	S\$ 9,256.99

Notes:

All DDX trim includes Potter Pressure Switch



DELUGE VALVES

- **MODEL DDX DELUGE VALVE**
- Electric, Wet Pilot Line, and Dry Pilot Line Trims
- See Bulletin 519

Description	Part Number	Short Code	List Price
MODEL DDX - DELUGE VALVES FULLY ASSEMBLED - ELECTRIC TRIM			
2" Electric Release	6522904110	2DDXFEN	S\$ 23,693.35
2" Electric Release w/Control Valve	6522908110	2DDXFEVN	S\$ 26,245.69
2-1/2" Electric Release	6521904110	25DDXFEN	S\$ 23,693.35
2-1/2" Electric Release w/Control Valve	6521908110	25DDXFEVN	S\$ 26,245.69
3" Electric Release	6523904110	3DDXFEN	S\$ 24,422.24
3" Electric Release w/Control Valve	6523908110	3DDXFEVN	S\$ 26,608.99
76MM Electric Release	6525905110	76DDXFEN	S\$ 23,693.35
4" Electric Release	6524904110	4DDXFEN	S\$ 24,450.03
4" Electric Release w/Control Valve	6524908110	4DDXFEVN	S\$ 26,981.51
6" Electric Release	6526904110	6DDXFEN	S\$ 27,180.52
6" Electric Release w/Control Valve	6526908110	6DDXFEVN	S\$ 29,621.32
165MM, DDX, Valve, w/Electric	6527905110	165DDXFWN	S\$ 27,180.52
8" Electric Release	6528904110	8DDXFEN	S\$ 36,538.30
8" Electric Release w/Control Valve	6528908110	8DDXFEVN	S\$ 41,452.74
MODEL DDX - DELUGE VALVES FULLY ASSEMBLED - WET PILOT LINE TRIM			
2" Wet Pilot Line	6522704010	2DDXFWN	S\$ 20,414.42
2" Wet Pilot Line w/Control Valve	6522708010	2DDXFWVN	S\$ 22,964.45
2-1/2" Wet Pilot Line	6521704010	25DDXFWN	S\$ 20,414.42
2-1/2" Wet Pilot Line w/Control Valve	6521708010	25DDXFWVN	S\$ 22,964.45
3" Wet Pilot Line	6523704010	3DDXFWN	S\$ 21,143.32
3" Wet Pilot Line w/Control Valve	6523708010	3DDXFWVN	S\$ 23,693.35
76MM Wet Pilot Line	6525705010	76DDXFWN	S\$ 20,414.42
4" Wet Pilot Line	6524704010	4DDXFWN	S\$ 21,650.07
4" Wet Pilot Line w/Control Valve	6524708010	4DDXFWVN	S\$ 24,183.90
6" Wet Pilot Line	6526704010	6DDXFWN	S\$ 24,380.61
6" Wet Pilot Line w/Control Valve	6526708010	6DDXFWVN	S\$ 27,932.57
165MM, DDX, Valve, w/Wet Pilot	6527705010	165DDXFWN	S\$ 24,380.30
8" Wet Pilot Line	6528704010	8DDXFWN	S\$ 35,534.01
8" Wet Pilot Line w/Control Valve	6528708010	8DDXFWVN	S\$ 42,890.19
MODEL DDX - DELUGE VALVES FULLY ASSEMBLED - DRY PILOT LINE TRIM			
2" Dry Pilot Line	6522804010	2DDXFDPN	S\$ 24,058.96
2" Dry Pilot Line w/Control Valve	6522808010	2DDXFDPVN	S\$ 26,608.99
2-1/2" Dry Pilot Line	6521804010	25DDXFDPN	S\$ 24,058.96
2-1/2" Dry Pilot Line w/Control Valve	6521808010	25DDXFDPVN	S\$ 26,608.99
3" Dry Pilot Line	6523804010	3DDXFDPN	S\$ 24,787.88
3" Dry Pilot Line w/Control Valve	6523808010	3DDXFDPVN	S\$ 27,337.88
76MM Dry Pilot Line	6525805010	76DDXFDPN	S\$ 24,058.96
4" Dry Pilot Line	6524804010	4DDXFDPN	S\$ 25,132.64
4" Dry Pilot Line w/Control Valve	6524808010	4DDXFDPVN	S\$ 27,668.76
6" Dry Pilot Line	6526804010	6DDXFDPN	S\$ 27,865.45
6" Dry Pilot Line w/Control Valve	6526808010	6DDXFDPVN	S\$ 31,415.14
165MM, DDX, Valve, w/ Dry Pilot line	6527805010	165DDXFDPN	S\$ 27,865.45
8" Dry Pilot Line	6528804010	8DDXFDPN	S\$ 37,207.04
8" Dry Pilot Line w/Control Valve	6528808010	8DDXFDPVN	S\$ 45,229.62

Notes: