

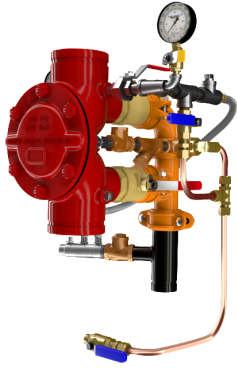
**DDV DIAPHRAGM  
 DELUGE  
 ELECTRIC TRIM**

- See Bulletins 551
- DDV Electric-Uses 175 PSI Solenoid Valve

Description	Part Number	Short Code	List Price
<b>MODEL DDV DELUGE VALVES FULLY ASSEMBLED - ELECTRIC TRIM</b>			
1-1/2" Groove/Groove (ANSI/AWWA C606)	6507002000	.	€ 7,127.95
1-1/2" Flange/Flange Class 150 (ASME B16.5)	6507102000		€ 7,840.75
1-1/2" Flange/Flange Class 300 (ASME B16.5)	6507202000		€ 7,840.75
1-1/2" Flange/Flange PN16 (ISO 7005-2)	6507302000		€ 7,840.75
1-1/2" NPT Thread/Thread (ANSI/ASME B1.20.1)	6507502000		€ 7,840.75
1-1/2" ISO7-1 Thread/Thread	6507602000		€ 7,840.75
2" Groove/Groove (ANSI/AWWA C606)	6507022000		€ 7,127.95
2" Flange/Flange Class 150 (ASME B16.5)	6507122000		€ 7,840.75
2" Flange/Flange Class 300 (ASME B16.5)	6507222000		€ 7,840.75
2" Flange/Flange PN16 (ISO 7005-2)	6507322000		€ 7,840.75
2" NPT Thread/Thread (ANSI/ASME B1.20.1)	6507522000		€ 7,840.75
2" ISO7-1 Thread/Thread	6507622000		€ 7,840.75
2-1/2" Groove/Groove (ANSI/AWWA C606)	6507012000		€ 8,315.95
2-1/2" Flange/Flange Class 150 (ASME B16.5)	6507112000		€ 9,147.54
2-1/2" Flange/Flange Class 300 (ASME B16.5)	6507212000		€ 9,147.54
2-1/2" Flange/Flange PN16 (ISO 7005-2)	6507312000		€ 9,147.54
2-1/2" NPT Thread/Thread (ANSI/ASME B1.20.1)	6507512000		€ 9,147.54
2-1/2" ISO7-1 Thread/Thread	6507612000		€ 9,147.54
76MM Groove/Groove (ANSI/AWWA C606)	6507072000		€ 8,315.95
3" Groove/Groove (ANSI/AWWA C606)	6507032000		€ 8,315.95
3" Flange/Flange Class 150 (ASME B16.5)	6507132000		€ 9,147.54
3" Flange/Flange Class 300 (ASME B16.5)	6507232000		€ 9,147.54
3" Flange/Flange PN16 (ISO 7005-2)	6507332000		€ 9,147.54
3" NPT Thread/Thread (ANSI/ASME B1.20.1)	6507532000		€ 9,147.54
3" ISO7-1 Thread/Thread	6507632000		€ 9,147.54
4" Groove/Groove (ANSI/AWWA C606)	6507042000		€10,097.94
4" Flange/Flange Class 150 (ASME B16.5)	6507142000		€11,107.73
4" Flange/Flange Class 300 (ASME B16.5)	6507242000		€11,107.73
4" Flange/Flange PN16 (ISO 7005-2)	6507342000		€11,107.73
6" Groove/Groove (ANSI/AWWA C606)	6507062000		€13,067.92
6" Flange/Flange Class 150 (ASME B16.5)	6507162000		€14,374.70
6" Flange/Flange Class 300 (ASME B16.5)	6507262000		€14,374.70
6" Flange/Flange PN16 (ISO 7005-2)	6507362000		€14,374.70
165MM Groove/Groove (ANSI/AWWA C606)	6507052000		€13,067.92
8" Groove/Groove (ANSI/AWWA C606)	6507082000		€27,499.82
8" Flange/Flange Class 150 (ASME B16.5)	6507182000		€30,249.81
8" Flange/Flange/Class 300 (ASME B16.5)	6507282000		€30,249.81
8" Flange/Flange PN16 (ISO 7005-2)	6507382000		€30,249.81

**Notes:**

Base trim does not include drain trim, alarm test line, or control valve. Please see the last page of the DDV section for optional trim components.



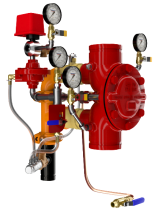
**DDV DIAPHRAGM  
 DELUGE WET  
 PILOT LINE**

- See Bulletin 551

Description	Part Number	Short Code	List Price
<b>MODEL DDV DELUGE VALVES FULLY ASSEMBLED - WET PILOT TRIM</b>			
1-1/2" Groove/Groove (ANSI/AWWA C606)	6507000000		€ 5,939.96
1-1/2" Flange/Flange Class 150 (ASME B16.5)	6507100000		€ 6,533.96
1-1/2" Flange/Flange Class 300 (ASME B16.5)	6507200000		€ 6,533.96
1-1/2" Flange/Flange PN16 (ISO 7005-2)	6507300000		€ 6,533.96
1-1/2" NPT Thread/Thread (ANSI/ASME B1.20.1)	6507500000		€ 6,533.96
1-1/2" ISO7-1 Thread/Thread	6507600000		€ 6,533.96
2" Groove/Groove (ANSI/AWWA C606)	6507020000		€ 5,939.96
2" Flange/Flange Class 150 (ASME B16.5)	6507120000		€ 6,533.96
2" Flange/Flange Class 300 (ASME B16.5)	6507220000		€ 6,533.96
2" Flange/Flange PN16 (ISO 7005-2)	6507320000		€ 6,533.96
2" NPT Thread/Thread (ANSI/ASME B1.20.1)	6507520000		€ 6,533.96
2" ISO7-1 Thread/Thread	6507620000		€ 6,533.96
2-1/2" Groove/Groove (ANSI/AWWA C606)	6507010000		€ 6,533.96
2-1/2" Flange/Flange Class 150 (ASME B16.5)	6507110000		€ 7,187.35
2-1/2" Flange/Flange Class 300 (ASME B16.5)	6507210000		€ 7,187.35
2-1/2" Flange/Flange PN16 (ISO 7005-2)	6507310000		€ 7,187.35
2-1/2" NPT Thread/Thread (ANSI/ASME B1.20.1)	6507510000		€ 7,187.35
2-1/2" ISO7-1 Thread/Thread	6507610000		€ 7,187.35
76MM Groove/Groove (ANSI/AWWA C606)	6507070000		€ 6,533.96
3" Groove/Groove (ANSI/AWWA C606)	6507030000		€ 6,533.96
3" Flange/Flange Class 150 (ASME B16.5)	6507130000		€ 7,187.35
3" Flange/Flange Class 300 (ASME B16.5)	6507230000		€ 7,187.35
3" Flange/Flange PN16 (ISO 7005-2)	6507330000		€ 7,187.35
3" NPT Thread/Thread (ANSI/ASME B1.20.1)	6507530000		€ 7,187.35
3" ISO7-1 Thread/Thread	6507630000		€ 7,187.35
4" Groove/Groove (ANSI/AWWA C606)	6507040000		€ 7,721.95
4" Flange/Flange Class 150 (ASME B16.5)	6507140000		€ 8,494.15
4" Flange/Flange Class 300 (ASME B16.5)	6507240000		€ 8,494.15
4" Flange/Flange PN16 (ISO 7005-2)	6507340000		€ 8,494.15
6" Groove/Groove (ANSI/AWWA C606)	6507060000		€ 9,503.94
6" Flange/Flange Class 150 (ASME B16.5)	6507160000		€10,454.33
6" Flange/Flange Class 300 (ASME B16.5)	6507260000		€10,454.33
6" Flange/Flange PN16 (ISO 7005-2)	6507360000		€10,454.33
165MM Groove/Groove (ANSI/AWWA C606)	6507050000		€ 9,503.94
8" Groove/Groove (ANSI/AWWA C606)	6507080000		€20,899.87
8" Flange/Flange Class 150 (ASME B16.5)	6507180000		€22,989.85
8" Flange/Flange Class 300 (ASME B16.5)	6507280000		€22,989.85
8" Flange/Flange PN16 (ISO 7005-2)	6507380000		€22,989.85

**Notes:**

Base trim does not include drain trim, alarm test line, or control valve. Please see the last page of the DDV section for optional trim components.



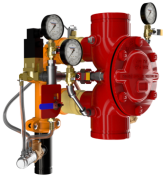
**DDV DIAPHRAGM  
 DELUGE DRY  
 PILOT LINE**

- See Bulletin 551

Description	Part Number	Short Code	List Price
<b>MODEL DDV DELUGE VALVES FULLY ASSEMBLED - DRY PILOT TRIM</b>			
1-1/2" Groove/Groove (ANSI/AWWA C606)	6507001000		€ 9,503.94
1-1/2" Flange/Flange Class 150 (ASME B16.5)	6507101000		€ 10,454.33
1-1/2" Flange/Flange Class 300 (ASME B16.5)	6507201000		€ 10,454.33
1-1/2" Flange/Flange PN16 (ISO 7005-2)	6507301000		€ 10,454.33
1-1/2" NPT Thread/Thread (ANSI/ASME B1.20.1)	6507501000		€ 10,454.33
1-1/2" ISO7-1 Thread/Thread	6507601000		€ 10,454.33
2" Groove/Groove (ANSI/AWWA C606)	6507021000		€ 9,503.94
2" Flange/Flange Class 150 (ASME B16.5)	6507121000		€ 10,454.33
2" Flange/Flange Class 300 (ASME B16.5)	6507221000		€ 10,454.33
2" Flange/Flange PN16 (ISO 7005-2)	6507321000		€ 10,454.33
2" NPT Thread/Thread (ANSI/ASME B1.20.1)	6507521000		€ 10,454.33
2" ISO7-1 Thread/Thread	6507621000		€ 10,454.33
2-1/2" Groove/Groove (ANSI/AWWA C606)	6507011000		€ 11,285.93
2-1/2" Flange/Flange Class 150 (ASME B16.5)	6507111000		€ 12,414.52
2-1/2" Flange/Flange Class 300 (ASME B16.5)	6507211000		€ 12,414.52
2-1/2" Flange/Flange PN16 (ISO 7005-2)	6507311000		€ 12,414.52
2-1/2" NPT Thread/Thread (ANSI/ASME B1.20.1)	6507511000		€ 12,414.52
2-1/2" ISO7-1 Thread/Thread	6507611000		€ 12,414.52
76MM Groove/Groove (ANSI/AWWA C606)	6507071000		€ 11,285.93
3" Groove/Groove (ANSI/AWWA C606)	6507031000		€ 11,285.93
3" Flange/Flange Class 150 (ASME B16.5)	6507131000		€ 12,414.52
3" Flange/Flange Class 300 (ASME B16.5)	6507231000		€ 12,414.52
3" Flange/Flange PN16 (ISO 7005-2)	6507331000		€ 12,414.52
3" NPT Thread/Thread (ANSI/ASME B1.20.1)	6507531000		€ 12,414.52
3" ISO7-1 Thread/Thread	6507631000		€ 12,414.52
4" Groove/Groove (ANSI/AWWA C606)	6507041000		€ 13,067.92
4" Flange/Flange Class 150 (ASME B16.5)	6507141000		€ 14,374.70
4" Flange/Flange Class 300 (ASME B16.5)	6507241000		€ 14,374.70
4" Flange/Flange PN16 (ISO 7005-2)	6507341000		€ 14,374.70
6" Groove/Groove (ANSI/AWWA C606)	6507061000		€ 15,443.90
6" Flange/Flange Class 150 (ASME B16.5)	6507161000		€ 16,988.29
6" Flange/Flange Class 300 (ASME B16.5)	6507261000		€ 16,988.29
6" Flange/Flange PN16 (ISO 7005-2)	6507361000		€ 16,988.29
165MM Groove/Groove (ANSI/AWWA C606)	6507051000		€ 15,443.90
8" Groove/Groove (ANSI/AWWA C606)	6507081000		€ 27,499.82
8" Flange/Flange Class 150 (ASME B16.5)	6507181000		€ 30,249.81
8" Flange/Flange Class 300 (ASME B16.5)	6507281000		€ 30,249.81
8" Flange/Flange PN16 (ISO 7005-2)	6507381000		€ 30,249.81

**Notes:**

Base trim does not include drain trim, alarm test line, or control valve. Please see the last page of the DDV section for optional trim components.



## DDV DIAPHRAGM DELUGE REMOTE RESET

- See Bulletin 550

Description	Part Number	Short Code	List Price
<b>MODEL DDV DELUGE VALVE - REMOTE RESET</b>			
1-1/2" Groove/Groove (ANSI/AWWA C606)	6507003000		€ 9,503.94
1-1/2" Flange/Flange Class 150 (ASME B16.5)	6507103000		€ 10,454.33
1-1/2" Flange/Flange Class 300 (ASME B16.5)	6507203000		€ 10,454.33
1-1/2" Flange/Flange PN16 (ISO 7005-2)	6507303000		€ 10,454.33
1-1/2" NPT Thread/Thread (ANSI/ASME B1.20.1)	6507503000		€ 10,454.33
1-1/2" ISO7-1 Thread/Thread	6507603000		€ 10,454.33
2" Groove/Groove (ANSI/AWWA C606)	6507023000		€ 9,503.94
2" Flange/Flange Class 150 (ASME B16.5)	6507123000		€ 10,454.33
2" Flange/Flange Class 300 (ASME B16.5)	6507223000		€ 10,454.33
2" Flange/Flange PN16 (ISO 7005-2)	6507323000		€ 10,454.33
2" NPT Thread/Thread (ANSI/ASME B1.20.1)	6507523000		€ 10,454.33
2" ISO7-1 Thread/Thread	6507623000		€ 10,454.33
2-1/2" Groove/Groove (ANSI/AWWA C606)	6507013000		€ 11,879.92
2-1/2" Flange/Flange Class 150 (ASME B16.5)	6507113000		€ 13,067.92
2-1/2" Flange/Flange Class 300 (ASME B16.5)	6507213000		€ 13,067.92
2-1/2" Flange/Flange PN16 (ISO 7005-2)	6507313000		€ 13,067.92
2-1/2" NPT Thread/Thread (ANSI/ASME B1.20.1)	6507513000		€ 13,067.92
2-1/2" ISO7-1 Thread/Thread	6507613000		€ 13,067.92
76MM Groove/Groove (ANSI/AWWA C606)	6507073000		€ 11,879.92
3" Groove/Groove (ANSI/AWWA C606)	6507033000		€ 11,879.92
3" Flange/Flange Class 150 (ASME B16.5)	6507133000		€ 13,067.92
3" Flange/Flange Class 300 (ASME B16.5)	6507233000		€ 13,067.92
3" Flange/Flange PN16 (ISO 7005-2)	6507333000		€ 13,067.92
3" NPT Thread/Thread (ANSI/ASME B1.20.1)	6507533000		€ 13,067.92
3" ISO7-1 Thread/Thread	6507633000		€ 13,067.92
4" Groove/Groove (ANSI/AWWA C606)	6507043000		€ 13,067.92
4" Flange/Flange Class 150 (ASME B16.5)	6507143000		€ 14,374.70
4" Flange/Flange Class 300 (ASME B16.5)	6507243000		€ 14,374.70
4" Flange/Flange PN16 (ISO 7005-2)	6507343000		€ 14,374.70
6" Groove/Groove (ANSI/AWWA C606)	6507063000		€ 15,443.90
6" Flange/Flange Class 150 (ASME B16.5)	6507163000		€ 16,988.29
6" Flange/Flange Class 300 (ASME B16.5)	6507263000		€ 16,988.29
6" Flange/Flange PN16 (ISO 7005-2)	6507363000		€ 16,988.29
165MM Groove/Groove (ANSI/AWWA C606)	6507053000		€ 15,443.90
8" Groove/Groove (ANSI/AWWA C606)	6507083000		€ 32,999.79
8" Flange/Flange Class 150 (ASME B16.5)	6507183000		€ 36,299.77
8" Flange/Flange Class 300 (ASME B16.5)	6507283000		€ 36,299.77
8" Flange/Flange PN16 (ISO 7005-2)	6507383000		€ 36,299.77

### Notes:

Base trim does not include drain trim, alarm test line, or control valve. Please see the last page of the DDV section for optional trim components.



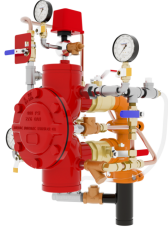
**DDV DIAPHRAGM  
 DELUGE REMOTE  
 RESET PRESSURE  
 REGULATING**

- See Bulletin 550

Description	Part Number	Short Code	List Price
<b>MODEL DDV DELUGE VALVE - REMOTE RESET PRESSURE REGULATING</b>			
1-1/2" Groove/Groove (ANSI/AWWA C606)	6507007000		€ 13,067.92
1-1/2" Flange/Flange Class 150 (ASME B16.5)	6507107000		€ 14,374.70
1-1/2" Flange/Flange Class 300 (ASME B16.5)	6507207000		€ 14,374.70
1-1/2" Flange/Flange PN16 (ISO 7005-2)	6507307000		€ 14,374.70
1-1/2" NPT Thread/Thread (ANSI/ASME B1.20.1)	6507507000		€ 14,374.70
1-1/2" ISO7-1 Thread/Thread	6507607000		€ 14,374.70
2" Groove/Groove (ANSI/AWWA C606)	6507027000		€ 13,067.92
2" Flange/Flange Class 150 (ASME B16.5)	6507127000		€ 14,374.70
2" Flange/Flange Class 300 (ASME B16.5)	6507227000		€ 14,374.70
2" Flange/Flange PN16 (ISO 7005-2)	6507327000		€ 14,374.70
2" NPT Thread/Thread (ANSI/ASME B1.20.1)	6507527000		€ 14,374.70
2" ISO7-1 Thread/Thread	6507627000		€ 14,374.70
2-1/2" Groove/Groove (ANSI/AWWA C606)	6507017000		€ 14,255.91
2-1/2" Flange/Flange Class 150 (ASME B16.5)	6507117000		€ 15,681.50
2-1/2" Flange/Flange Class 300 (ASME B16.5)	6507217000		€ 15,681.50
2-1/2" Flange/Flange PN16 (ISO 7005-2)	6507317000		€ 15,681.50
2-1/2" NPT Thread/Thread (ANSI/ASME B1.20.1)	6507517000		€ 15,681.50
2-1/2" ISO7-1 Thread/Thread	6507617000		€ 15,681.50
76MM Groove/Groove (ANSI/AWWA C606)	6507077000		€ 14,255.91
3" Groove/Groove (ANSI/AWWA C606)	6507037000		€ 14,255.91
3" Flange/Flange Class 150 (ASME B16.5)	6507137000		€ 15,681.50
3" Flange/Flange Class 300 (ASME B16.5)	6507237000		€ 15,681.50
3" Flange/Flange PN16 (ISO 7005-2)	6507337000		€ 15,681.50
3" NPT Thread/Thread (ANSI/ASME B1.20.1)	6507537000		€ 15,681.50
3" ISO7-1 Thread/Thread	6507637000		€ 15,681.50
4" Groove/Groove (ANSI/AWWA C606)	6507047000		€ 15,443.90
4" Flange/Flange Class 150 (ASME B16.5)	6507147000		€ 16,988.29
4" Flange/Flange Class 300 (ASME B16.5)	6507247000		€ 16,988.29
4" Flange/Flange PN16 (ISO 7005-2)	6507347000		€ 16,988.29
6" Groove/Groove (ANSI/AWWA C606)	6507067000		€ 17,819.89
6" Flange/Flange Class 150 (ASME B16.5)	6507167000		€ 19,601.87
6" Flange/Flange Class 300 (ASME B16.5)	6507267000		€ 19,601.87
6" Flange/Flange PN16 (ISO 7005-2)	6507367000		€ 19,601.87
165MM Groove/Groove (ANSI/AWWA C606)	6507057000		€ 17,819.89

**Notes:**

Base trim does not include drain trim, alarm test line, or control valve. Please see the last page of the DDV section for optional trim components.



**DDV DIAPHRAGM  
 DELUGE DRY  
 PILOT PRESSURE  
 REGULATING**

- See Bulletin 550
- Dry Pilot Pressure Regulating

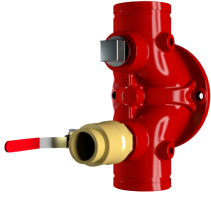
Description	Part Number	Short Code	List Price
<b>MODEL DDV DELUGE VALVE - DRY PILOT PRESSURE REGULATING</b>			
1-1/2" Groove/Groove (ANSI/AWWA C606)	6507005000		€ 11,879.92
1-1/2" Flange/Flange Class 150 (ASME B16.5)	6507105000		€ 13,067.92
1-1/2" Flange/Flange Class 300 (ASME B16.5)	6507205000		€ 13,067.92
1-1/2" Flange/Flange PN16 (ISO 7005-2)	6507305000		€ 13,067.92
1-1/2" NPT Thread/Thread (ANSI/ASME B1.20.1)	6507505000		€ 13,067.92
1-1/2" ISO7-1 Thread/Thread	6507605000		€ 13,067.92
2" Groove/Groove (ANSI/AWWA C606)	6507025000		€ 11,879.92
2" Flange/Flange Class 150 (ASME B16.5)	6507125000		€ 13,067.92
2" Flange/Flange Class 300 (ASME B16.5)	6507225000		€ 13,067.92
2" Flange/Flange PN16 (ISO 7005-2)	6507325000		€ 13,067.92
2" NPT Thread/Thread (ANSI/ASME B1.20.1)	6507525000		€ 13,067.92
2" ISO7-1 Thread/Thread	6507625000		€ 13,067.92
2-1/2" Groove/Groove (ANSI/AWWA C606)	6507015000		€ 13,661.91
2-1/2" Flange/Flange Class 150 (ASME B16.5)	6507115000		€ 15,028.11
2-1/2" Flange/Flange Class 300 (ASME B16.5)	6507215000		€ 15,028.11
2-1/2" Flange/Flange PN16 (ISO 7005-2)	6507315000		€ 15,028.11
2-1/2" NPT Thread/Thread (ANSI/ASME B1.20.1)	6507515000		€ 15,028.11
2-1/2" ISO7-1 Thread/Thread	6507615000		€ 15,028.11
76MM Groove/Groove (ANSI/AWWA C606)	6507075000		€ 13,661.91
3" Groove/Groove (ANSI/AWWA C606)	6507035000		€ 13,661.91
3" Flange/Flange Class 150 (ASME B16.5)	6507135000		€ 15,028.11
3" Flange/Flange Class 300 (ASME B16.5)	6507235000		€ 15,028.11
3" Flange/Flange PN16 (ISO 7005-2)	6507335000		€ 15,028.11
3" NPT Thread/Thread (ANSI/ASME B1.20.1)	6507535000		€ 15,028.11
3" ISO7-1 Thread/Thread	6507635000		€ 15,028.11
4" Groove/Groove (ANSI/AWWA C606)	6507045000		€ 15,443.90
4" Flange/Flange Class 150 (ASME B16.5)	6507145000		€ 16,988.29
4" Flange/Flange Class 300 (ASME B16.5)	6507245000		€ 16,988.29
4" Flange/Flange PN16 (ISO 7005-2)	6507345000		€ 16,988.29
6" Groove/Groove (ANSI/AWWA C606)	6507065000		€ 17,819.89
6" Flange/Flange Class 150 (ASME B16.5)	6507165000		€ 19,601.87
6" Flange/Flange Class 300 (ASME B16.5)	6507265000		€ 19,601.87
6" Flange/Flange PN16 (ISO 7005-2)	6507365000		€ 19,601.87
165MM Groove/Groove (ANSI/AWWA C606)	6507055000		€ 17,819.89

**Notes:**

Base trim does not include drain trim, alarm test line, or control valve. Please see the last page of the DDV section for optional trim components.

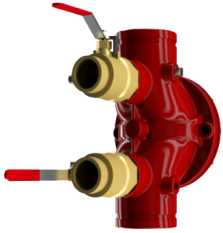
## DDV DIAPHRAGM DELUGE VALVE

- Bulletin 550

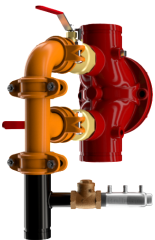


## LOWER BALL VALVE

- Lower & Upper Ball Valve Option X 2



## DUAL BALL VALVE



## FULL DRAIN VALVE

Description	Part Number	Short Code	List Price
<b>DRAIN TRIM OPTIONS- SELECT ONE</b>			
Lower Ball Valve - 1-1/2" & 2"	77000300		€ 178.20
Lower Ball Valve - 2-1/2", 3"	77000299		€ 415.79
Lower Ball Valve - 4", 6", 8"	9884011D		€ 712.79
Lower & Upper Ball Valve -1 -1/2" & 2"	77000300		€ 178.20
Lower & Upper Ball Valve - 2-1/2", 3"	77000299		€ 415.79
Lower & Upper Ball Valve - 4", 6", 8"	9884011D		€ 712.79
Full Drain Trim - 1-1/2" & 2"	77037003		€ 772.20
Full Drain Trim - 2-1/2", 3"	77037004		€ 1,306.79
Full Drain Trim - 4", 6", 8"	77037002		€ 2,732.38
<b>OPTIONAL TRIM</b>			
DDV Alarm Test Kit MTO	6501040001		€ 475.20
600 psi Gauge	98248005		€ 119.90
<b>CONTROL VALVES (UPPER &amp; LOWER)</b>			
Control Valve - 2-1/2"	77000302		€ 1,069.20
Control Valve - 3"	77000303		€ 1,069.20
Control Valve - 4"	77000304		€ 1,187.99
Control Valve - 6"	77000306		€ 1,544.39
S/A Control Valve 8"	77000308		€ 2,166.99
Control Valve w/Inlet Spool - 2-1/2"	77000271		€ 1,425.59
Control Valve w/Inlet Spool - 3"	77000273		€ 1,425.59
Control Valve w/Inlet Spool - 4"	77000274		€ 1,544.39
Control Valve w/Inlet Spool - 6"	77000276		€ 2,138.38
DDV S/A Control Valve 8" Winlet Spool	77000278		€ 2,993.08



## DELUGE VALVES

- **MODEL DDX DELUGE VALVE**
- Electric, Wet Pilot Line, and Dry Pilot Line Trims
- See Bulletin 519

Description	Part Number	Short Code	List Price
<b>MODEL DDX - DELUGE VALVES FULLY ASSEMBLED - ELECTRIC TRIM</b>			
2" Electric Release	6522904110	2DDXFEN	€ 13,792.88
2" Electric Release w/Control Valve	6522908110	2DDXFEVN	€ 15,278.71
2-1/2" Electric Release	6521904110	25DDXFEN	€ 13,792.88
2-1/2" Electric Release w/Control Valve	6521908110	25DDXFEVN	€ 15,278.71
3" Electric Release	6523904110	3DDXFEN	€ 14,217.21
3" Electric Release w/Control Valve	6523908110	3DDXFEVN	€ 15,490.20
76MM Electric Release	6525905110	76DDXFEN	€ 13,792.88
4" Electric Release	6524904110	4DDXFEN	€ 14,233.38
4" Electric Release w/Control Valve	6524908110	4DDXFEVN	€ 15,707.07
6" Electric Release	6526904110	6DDXFEN	€ 15,822.92
6" Electric Release w/Control Valve	6526908110	6DDXFEVN	€ 17,243.81
165MM, DDX, Valve, w/Electric	6527905110	165DDXFVN	€ 15,822.92
8" Electric Release	6528904110	8DDXFEN	€ 21,270.47
8" Electric Release w/Control Valve	6528908110	8DDXFEVN	€ 24,131.37
<b>MODEL DDX - DELUGE VALVES FULLY ASSEMBLED - WET PILOT LINE TRIM</b>			
2" Wet Pilot Line	6522704010	2DDXFVN	€ 11,884.09
2" Wet Pilot Line w/Control Valve	6522708010	2DDXFVNV	€ 13,368.56
2-1/2" Wet Pilot Line	6521704010	25DDXFVN	€ 11,884.09
2-1/2" Wet Pilot Line w/Control Valve	6521708010	25DDXFVNV	€ 13,368.56
3" Wet Pilot Line	6523704010	3DDXFVN	€ 12,308.41
3" Wet Pilot Line w/Control Valve	6523708010	3DDXFVNV	€ 13,792.88
76MM Wet Pilot Line	6525705010	76DDXFVN	€ 11,884.09
4" Wet Pilot Line	6524704010	4DDXFVN	€ 12,603.41
4" Wet Pilot Line w/Control Valve	6524708010	4DDXFVNV	€ 14,078.46
6" Wet Pilot Line	6526704010	6DDXFVN	€ 14,192.96
6" Wet Pilot Line w/Control Valve	6526708010	6DDXFVNV	€ 16,260.71
165MM, DDX, Valve, w/Wet Pilot	6527705010	165DDXFVN	€ 14,192.79
8" Wet Pilot Line	6528704010	8DDXFVN	€ 20,685.83
8" Wet Pilot Line w/Control Valve	6528708010	8DDXFVNV	€ 24,968.16
<b>MODEL DDX - DELUGE VALVES FULLY ASSEMBLED - DRY PILOT LINE TRIM</b>			
2" Dry Pilot Line	6522804010	2DDXFDPN	€ 14,005.73
2" Dry Pilot Line w/Control Valve	6522808010	2DDXFDPVN	€ 15,490.20
2-1/2" Dry Pilot Line	6521804010	25DDXFDPN	€ 14,005.73
2-1/2" Dry Pilot Line w/Control Valve	6521808010	25DDXFDPVN	€ 15,490.20
3" Dry Pilot Line	6523804010	3DDXFDPN	€ 14,430.06
3" Dry Pilot Line w/Control Valve	6523808010	3DDXFDPVN	€ 15,914.52
76MM Dry Pilot Line	6525805010	76DDXFDPN	€ 14,005.73
4" Dry Pilot Line	6524804010	4DDXFDPN	€ 14,630.76
4" Dry Pilot Line w/Control Valve	6524808010	4DDXFDPVN	€ 16,107.14
6" Dry Pilot Line	6526804010	6DDXFDPN	€ 16,221.65
6" Dry Pilot Line w/Control Valve	6526808010	6DDXFDPVN	€ 18,288.06
165MM, DDX, Valve, w/ Dry Pilot line	6527805010	165DDXFDPN	€ 16,221.65
8" Dry Pilot Line	6528804010	8DDXFDPN	€ 21,659.77
8" Dry Pilot Line w/Control Valve	6528808010	8DDXFDPVN	€ 26,330.05

**Notes:**