

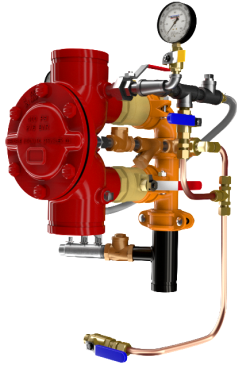
**DDV DIAPHRAGM  
 DELUGE  
 ELECTRIC TRIM**

- See Bulletins 551
- DDV Electric-Uses 175 PSI Solenoid Valve

Description	Part Number	Short Code	List Price
<b>MODEL DDV DELUGE VALVES FULLY ASSEMBLED - ELECTRIC TRIM</b>			
1-1/2" Groove/Groove (ANSI/AWWA C606)	6507002000		C\$ 11,767.30
1-1/2" Flange/Flange Class 150 (ASME B16.5)	6507102000		C\$ 12,944.02
1-1/2" Flange/Flange Class 300 (ASME B16.5)	6507202000		C\$ 12,944.02
1-1/2" Flange/Flange PN16 (ISO 7005-2)	6507302000		C\$ 12,944.02
1-1/2" NPT Thread/Thread (ANSI/ASME B1.20.1)	6507502000		C\$ 12,944.02
1-1/2" ISO7-1 Thread/Thread	6507602000		C\$ 12,944.02
2" Groove/Groove (ANSI/AWWA C606)	6507022000		C\$ 11,767.30
2" Flange/Flange Class 150 (ASME B16.5)	6507122000		C\$ 12,944.02
2" Flange/Flange Class 300 (ASME B16.5)	6507222000		C\$ 12,944.02
2" Flange/Flange PN16 (ISO 7005-2)	6507322000		C\$ 12,944.02
2" NPT Thread/Thread (ANSI/ASME B1.20.1)	6507522000		C\$ 12,944.02
2" ISO7-1 Thread/Thread	6507622000		C\$ 12,944.02
2-1/2" Groove/Groove (ANSI/AWWA C606)	6507012000		C\$ 13,728.51
2-1/2" Flange/Flange Class 150 (ASME B16.5)	6507112000		C\$ 15,101.37
2-1/2" Flange/Flange Class 300 (ASME B16.5)	6507212000		C\$ 15,101.37
2-1/2" Flange/Flange PN16 (ISO 7005-2)	6507312000		C\$ 15,101.37
2-1/2" NPT Thread/Thread (ANSI/ASME B1.20.1)	6507512000		C\$ 15,101.37
2-1/2" ISO7-1 Thread/Thread	6507612000		C\$ 15,101.37
76MM Groove/Groove (ANSI/AWWA C606)	6507072000		C\$ 13,728.51
3" Groove/Groove (ANSI/AWWA C606)	6507032000		C\$ 13,728.51
3" Flange/Flange Class 150 (ASME B16.5)	6507132000		C\$ 15,101.37
3" Flange/Flange Class 300 (ASME B16.5)	6507232000		C\$ 15,101.37
3" Flange/Flange PN16 (ISO 7005-2)	6507332000		C\$ 15,101.37
3" NPT Thread/Thread (ANSI/ASME B1.20.1)	6507532000		C\$ 15,101.37
3" ISO7-1 Thread/Thread	6507632000		C\$ 15,101.37
4" Groove/Groove (ANSI/AWWA C606)	6507042000		C\$ 16,670.34
4" Flange/Flange Class 150 (ASME B16.5)	6507142000		C\$ 18,337.37
4" Flange/Flange Class 300 (ASME B16.5)	6507242000		C\$ 18,337.37
4" Flange/Flange PN16 (ISO 7005-2)	6507342000		C\$ 18,337.37
6" Groove/Groove (ANSI/AWWA C606)	6507062000		C\$ 21,573.38
6" Flange/Flange Class 150 (ASME B16.5)	6507162000		C\$ 23,730.70
6" Flange/Flange Class 300 (ASME B16.5)	6507262000		C\$ 23,730.70
6" Flange/Flange PN16 (ISO 7005-2)	6507362000		C\$ 23,730.70
165MM Groove/Groove (ANSI/AWWA C606)	6507052000		C\$ 21,573.38
8" Groove/Groove (ANSI/AWWA C606)	6507082000		C\$ 45,398.53
8" Flange/Flange Class 150 (ASME B16.5)	6507182000		C\$ 49,938.38
8" Flange/Flange/Class 300 (ASME B16.5)	6507282000		C\$ 49,938.38
8" Flange/Flange PN16 (ISO 7005-2)	6507382000		C\$ 49,938.38

**Notes:**

Base trim does not include drain trim, alarm test line, or control valve. Please see the last page of the DDV section for optional trim components.



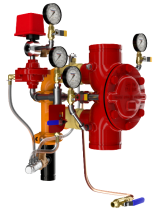
**DDV DIAPHRAGM  
 DELUGE WET  
 PILOT LINE**

- See Bulletin 551

Description	Part Number	Short Code	List Price
<b>MODEL DDV DELUGE VALVES FULLY ASSEMBLED - WET PILOT TRIM</b>			
1-1/2" Groove/Groove (ANSI/AWWA C606)	6507000000		C\$ 9,806.08
1-1/2" Flange/Flange Class 150 (ASME B16.5)	6507100000		C\$ 10,786.69
1-1/2" Flange/Flange Class 300 (ASME B16.5)	6507200000		C\$ 10,786.69
1-1/2" Flange/Flange PN16 (ISO 7005-2)	6507300000		C\$ 10,786.69
1-1/2" NPT Thread/Thread (ANSI/ASME B1.20.1)	6507500000		C\$ 10,786.69
1-1/2" ISO7-1 Thread/Thread	6507600000		C\$ 10,786.69
2" Groove/Groove (ANSI/AWWA C606)	6507020000		C\$ 9,806.08
2" Flange/Flange Class 150 (ASME B16.5)	6507120000		C\$ 10,786.69
2" Flange/Flange Class 300 (ASME B16.5)	6507220000		C\$ 10,786.69
2" Flange/Flange PN16 (ISO 7005-2)	6507320000		C\$ 10,786.69
2" NPT Thread/Thread (ANSI/ASME B1.20.1)	6507520000		C\$ 10,786.69
2" ISO7-1 Thread/Thread	6507620000		C\$ 10,786.69
2-1/2" Groove/Groove (ANSI/AWWA C606)	6507010000		C\$ 10,786.69
2-1/2" Flange/Flange Class 150 (ASME B16.5)	6507110000		C\$ 11,865.36
2-1/2" Flange/Flange Class 300 (ASME B16.5)	6507210000		C\$ 11,865.36
2-1/2" Flange/Flange PN16 (ISO 7005-2)	6507310000		C\$ 11,865.36
2-1/2" NPT Thread/Thread (ANSI/ASME B1.20.1)	6507510000		C\$ 11,865.36
2-1/2" ISO7-1 Thread/Thread	6507610000		C\$ 11,865.36
76MM Groove/Groove (ANSI/AWWA C606)	6507070000		C\$ 10,786.69
3" Groove/Groove (ANSI/AWWA C606)	6507030000		C\$ 10,786.69
3" Flange/Flange Class 150 (ASME B16.5)	6507130000		C\$ 11,865.36
3" Flange/Flange Class 300 (ASME B16.5)	6507230000		C\$ 11,865.36
3" Flange/Flange PN16 (ISO 7005-2)	6507330000		C\$ 11,865.36
3" NPT Thread/Thread (ANSI/ASME B1.20.1)	6507530000		C\$ 11,865.36
3" ISO7-1 Thread/Thread	6507630000		C\$ 11,865.36
4" Groove/Groove (ANSI/AWWA C606)	6507040000		C\$ 12,747.90
4" Flange/Flange Class 150 (ASME B16.5)	6507140000		C\$ 14,022.70
4" Flange/Flange Class 300 (ASME B16.5)	6507240000		C\$ 14,022.70
4" Flange/Flange PN16 (ISO 7005-2)	6507340000		C\$ 14,022.70
6" Groove/Groove (ANSI/AWWA C606)	6507060000		C\$ 15,689.73
6" Flange/Flange Class 150 (ASME B16.5)	6507160000		C\$ 17,258.70
6" Flange/Flange Class 300 (ASME B16.5)	6507260000		C\$ 17,258.70
6" Flange/Flange PN16 (ISO 7005-2)	6507360000		C\$ 17,258.70
165MM Groove/Groove (ANSI/AWWA C606)	6507050000		C\$ 15,689.73
8" Groove/Groove (ANSI/AWWA C606)	6507080000		C\$ 34,502.88
8" Flange/Flange Class 150 (ASME B16.5)	6507180000		C\$ 37,953.16
8" Flange/Flange Class 300 (ASME B16.5)	6507280000		C\$ 37,953.16
8" Flange/Flange PN16 (ISO 7005-2)	6507380000		C\$ 37,953.16

**Notes:**

Base trim does not include drain trim, alarm test line, or control valve. Please see the last page of the DDV section for optional trim components.



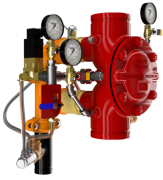
**DDV DIAPHRAGM  
 DELUGE DRY  
 PILOT LINE**

- See Bulletin 551

Description	Part Number	Short Code	List Price
<b>MODEL DDV DELUGE VALVES FULLY ASSEMBLED - DRY PILOT TRIM</b>			
1-1/2" Groove/Groove (ANSI/AWWA C606)	6507001000		C\$15,689.73
1-1/2" Flange/Flange Class 150 (ASME B16.5)	6507101000		C\$17,258.70
1-1/2" Flange/Flange Class 300 (ASME B16.5)	6507201000		C\$17,258.70
1-1/2" Flange/Flange PN16 (ISO 7005-2)	6507301000		C\$17,258.70
1-1/2" NPT Thread/Thread (ANSI/ASME B1.20.1)	6507501000		C\$17,258.70
1-1/2" ISO7-1 Thread/Thread	6507601000		C\$17,258.70
2" Groove/Groove (ANSI/AWWA C606)	6507021000		C\$15,689.73
2" Flange/Flange Class 150 (ASME B16.5)	6507121000		C\$17,258.70
2" Flange/Flange Class 300 (ASME B16.5)	6507221000		C\$17,258.70
2" Flange/Flange PN16 (ISO 7005-2)	6507321000		C\$17,258.70
2" NPT Thread/Thread (ANSI/ASME B1.20.1)	6507521000		C\$17,258.70
2" ISO7-1 Thread/Thread	6507621000		C\$17,258.70
2-1/2" Groove/Groove (ANSI/AWWA C606)	6507011000		C\$18,631.55
2-1/2" Flange/Flange Class 150 (ASME B16.5)	6507111000		C\$20,494.71
2-1/2" Flange/Flange Class 300 (ASME B16.5)	6507211000		C\$20,494.71
2-1/2" Flange/Flange PN16 (ISO 7005-2)	6507311000		C\$20,494.71
2-1/2" NPT Thread/Thread (ANSI/ASME B1.20.1)	6507511000		C\$20,494.71
2-1/2" ISO7-1 Thread/Thread	6507611000		C\$20,494.71
76MM Groove/Groove (ANSI/AWWA C606)	6507071000		C\$18,631.55
3" Groove/Groove (ANSI/AWWA C606)	6507031000		C\$18,631.55
3" Flange/Flange Class 150 (ASME B16.5)	6507131000		C\$20,494.71
3" Flange/Flange Class 300 (ASME B16.5)	6507231000		C\$20,494.71
3" Flange/Flange PN16 (ISO 7005-2)	6507331000		C\$20,494.71
3" NPT Thread/Thread (ANSI/ASME B1.20.1)	6507531000		C\$20,494.71
3" ISO7-1 Thread/Thread	6507631000		C\$20,494.71
4" Groove/Groove (ANSI/AWWA C606)	6507041000		C\$21,573.38
4" Flange/Flange Class 150 (ASME B16.5)	6507141000		C\$23,730.70
4" Flange/Flange Class 300 (ASME B16.5)	6507241000		C\$23,730.70
4" Flange/Flange PN16 (ISO 7005-2)	6507341000		C\$23,730.70
6" Groove/Groove (ANSI/AWWA C606)	6507061000		C\$25,495.82
6" Flange/Flange Class 150 (ASME B16.5)	6507161000		C\$28,045.39
6" Flange/Flange Class 300 (ASME B16.5)	6507261000		C\$28,045.39
6" Flange/Flange PN16 (ISO 7005-2)	6507361000		C\$28,045.39
165MM Groove/Groove (ANSI/AWWA C606)	6507051000		C\$25,495.82
8" Groove/Groove (ANSI/AWWA C606)	6507081000		C\$45,398.53
8" Flange/Flange Class 150 (ASME B16.5)	6507181000		C\$49,938.38
8" Flange/Flange Class 300 (ASME B16.5)	6507281000		C\$49,938.38
8" Flange/Flange PN16 (ISO 7005-2)	6507381000		C\$49,938.38

**Notes:**

Base trim does not include drain trim, alarm test line, or control valve. Please see the last page of the DDV section for optional trim components.



## DDV DIAPHRAGM DELUGE REMOTE RESET

- See Bulletin 550

Description	Part Number	Short Code	List Price
<b>MODEL DDV DELUGE VALVE - REMOTE RESET</b>			
1-1/2" Groove/Groove (ANSI/AWWA C606)	6507003000		C\$15,689.73
1-1/2" Flange/Flange Class 150 (ASME B16.5)	6507103000		C\$17,258.70
1-1/2" Flange/Flange Class 300 (ASME B16.5)	6507203000		C\$17,258.70
1-1/2" Flange/Flange PN16 (ISO 7005-2)	6507303000		C\$17,258.70
1-1/2" NPT Thread/Thread (ANSI/ASME B1.20.1)	6507503000		C\$17,258.70
1-1/2" ISO7-1 Thread/Thread	6507603000		C\$17,258.70
2" Groove/Groove (ANSI/AWWA C606)	6507023000		C\$15,689.73
2" Flange/Flange Class 150 (ASME B16.5)	6507123000		C\$17,258.70
2" Flange/Flange Class 300 (ASME B16.5)	6507223000		C\$17,258.70
2" Flange/Flange PN16 (ISO 7005-2)	6507323000		C\$17,258.70
2" NPT Thread/Thread (ANSI/ASME B1.20.1)	6507523000		C\$17,258.70
2" ISO7-1 Thread/Thread	6507623000		C\$17,258.70
2-1/2" Groove/Groove (ANSI/AWWA C606)	6507013000		C\$19,612.17
2-1/2" Flange/Flange Class 150 (ASME B16.5)	6507113000		C\$21,573.38
2-1/2" Flange/Flange Class 300 (ASME B16.5)	6507213000		C\$21,573.38
2-1/2" Flange/Flange PN16 (ISO 7005-2)	6507313000		C\$21,573.38
2-1/2" NPT Thread/Thread (ANSI/ASME B1.20.1)	6507513000		C\$21,573.38
2-1/2" ISO7-1 Thread/Thread	6507613000		C\$21,573.38
76MM Groove/Groove (ANSI/AWWA C606)	6507073000		C\$19,612.17
3" Groove/Groove (ANSI/AWWA C606)	6507033000		C\$19,612.17
3" Flange/Flange Class 150 (ASME B16.5)	6507133000		C\$21,573.38
3" Flange/Flange Class 300 (ASME B16.5)	6507233000		C\$21,573.38
3" Flange/Flange PN16 (ISO 7005-2)	6507333000		C\$21,573.38
3" NPT Thread/Thread (ANSI/ASME B1.20.1)	6507533000		C\$21,573.38
3" ISO7-1 Thread/Thread	6507633000		C\$21,573.38
4" Groove/Groove (ANSI/AWWA C606)	6507043000		C\$21,573.38
4" Flange/Flange Class 150 (ASME B16.5)	6507143000		C\$23,730.70
4" Flange/Flange Class 300 (ASME B16.5)	6507243000		C\$23,730.70
4" Flange/Flange PN16 (ISO 7005-2)	6507343000		C\$23,730.70
6" Groove/Groove (ANSI/AWWA C606)	6507063000		C\$25,495.82
6" Flange/Flange Class 150 (ASME B16.5)	6507163000		C\$28,045.39
6" Flange/Flange Class 300 (ASME B16.5)	6507263000		C\$28,045.39
6" Flange/Flange PN16 (ISO 7005-2)	6507363000		C\$28,045.39
165MM Groove/Groove (ANSI/AWWA C606)	6507053000		C\$25,495.82
8" Groove/Groove (ANSI/AWWA C606)	6507083000		C\$54,478.23
8" Flange/Flange Class 150 (ASME B16.5)	6507183000		C\$59,926.05
8" Flange/Flange Class 300 (ASME B16.5)	6507283000		C\$59,926.05
8" Flange/Flange PN16 (ISO 7005-2)	6507383000		C\$59,926.05

**Notes:**

Base trim does not include drain trim, alarm test line, or control valve. Please see the last page of the DDV section for optional trim components.



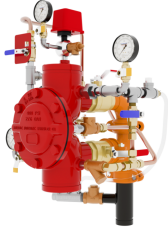
**DDV DIAPHRAGM  
 DELUGE REMOTE  
 RESET PRESSURE  
 REGULATING**

- See Bulletin 550

Description	Part Number	Short Code	List Price
<b>MODEL DDV DELUGE VALVE - REMOTE RESET PRESSURE REGULATING</b>			
1-1/2" Groove/Groove (ANSI/AWWA C606)	6507007000		C\$21,573.38
1-1/2" Flange/Flange Class 150 (ASME B16.5)	6507107000		C\$23,730.70
1-1/2" Flange/Flange Class 300 (ASME B16.5)	6507207000		C\$23,730.70
1-1/2" Flange/Flange PN16 (ISO 7005-2)	6507307000		C\$23,730.70
1-1/2" NPT Thread/Thread (ANSI/ASME B1.20.1)	6507507000		C\$23,730.70
1-1/2" ISO7-1 Thread/Thread	6507607000		C\$23,730.70
2" Groove/Groove (ANSI/AWWA C606)	6507027000		C\$21,573.38
2" Flange/Flange Class 150 (ASME B16.5)	6507127000		C\$23,730.70
2" Flange/Flange Class 300 (ASME B16.5)	6507227000		C\$23,730.70
2" Flange/Flange PN16 (ISO 7005-2)	6507327000		C\$23,730.70
2" NPT Thread/Thread (ANSI/ASME B1.20.1)	6507527000		C\$23,730.70
2" ISO7-1 Thread/Thread	6507627000		C\$23,730.70
2-1/2" Groove/Groove (ANSI/AWWA C606)	6507017000		C\$23,534.59
2-1/2" Flange/Flange Class 150 (ASME B16.5)	6507117000		C\$25,888.06
2-1/2" Flange/Flange Class 300 (ASME B16.5)	6507217000		C\$25,888.06
2-1/2" Flange/Flange PN16 (ISO 7005-2)	6507317000		C\$25,888.06
2-1/2" NPT Thread/Thread (ANSI/ASME B1.20.1)	6507517000		C\$25,888.06
2-1/2" ISO7-1 Thread/Thread	6507617000		C\$25,888.06
76MM Groove/Groove (ANSI/AWWA C606)	6507077000		C\$23,534.59
3" Groove/Groove (ANSI/AWWA C606)	6507037000		C\$23,534.59
3" Flange/Flange Class 150 (ASME B16.5)	6507137000		C\$25,888.06
3" Flange/Flange Class 300 (ASME B16.5)	6507237000		C\$25,888.06
3" Flange/Flange PN16 (ISO 7005-2)	6507337000		C\$25,888.06
3" NPT Thread/Thread (ANSI/ASME B1.20.1)	6507537000		C\$25,888.06
3" ISO7-1 Thread/Thread	6507637000		C\$25,888.06
4" Groove/Groove (ANSI/AWWA C606)	6507047000		C\$25,495.82
4" Flange/Flange Class 150 (ASME B16.5)	6507147000		C\$28,045.39
4" Flange/Flange Class 300 (ASME B16.5)	6507247000		C\$28,045.39
4" Flange/Flange PN16 (ISO 7005-2)	6507347000		C\$28,045.39
6" Groove/Groove (ANSI/AWWA C606)	6507067000		C\$29,418.24
6" Flange/Flange Class 150 (ASME B16.5)	6507167000		C\$32,360.07
6" Flange/Flange Class 300 (ASME B16.5)	6507267000		C\$32,360.07
6" Flange/Flange PN16 (ISO 7005-2)	6507367000		C\$32,360.07
165MM Groove/Groove (ANSI/AWWA C606)	6507057000		C\$29,418.24

**Notes:**

Base trim does not include drain trim, alarm test line, or control valve. Please see the last page of the DDV section for optional trim components.



**DDV DIAPHRAGM  
 DELUGE DRY  
 PILOT PRESSURE  
 REGULATING**

- See Bulletin 550
- Dry Pilot Pressure Regulating

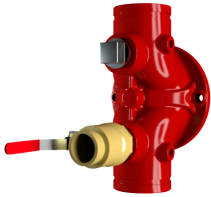
Description	Part Number	Short Code	List Price
<b>MODEL DDV DELUGE VALVE - DRY PILOT PRESSURE REGULATING</b>			
1-1/2" Groove/Groove (ANSI/AWWA C606)	6507005000		C\$19,612.17
1-1/2" Flange/Flange Class 150 (ASME B16.5)	6507105000		C\$21,573.38
1-1/2" Flange/Flange Class 300 (ASME B16.5)	6507205000		C\$21,573.38
1-1/2" Flange/Flange PN16 (ISO 7005-2)	6507305000		C\$21,573.38
1-1/2" NPT Thread/Thread (ANSI/ASME B1.20.1)	6507505000		C\$21,573.38
1-1/2" ISO7-1 Thread/Thread	6507605000		C\$21,573.38
2" Groove/Groove (ANSI/AWWA C606)	6507025000		C\$19,612.17
2" Flange/Flange Class 150 (ASME B16.5)	6507125000		C\$21,573.38
2" Flange/Flange Class 300 (ASME B16.5)	6507225000		C\$21,573.38
2" Flange/Flange PN16 (ISO 7005-2)	6507325000		C\$21,573.38
2" NPT Thread/Thread (ANSI/ASME B1.20.1)	6507525000		C\$21,573.38
2" ISO7-1 Thread/Thread	6507625000		C\$21,573.38
2-1/2" Groove/Groove (ANSI/AWWA C606)	6507015000		C\$22,553.99
2-1/2" Flange/Flange Class 150 (ASME B16.5)	6507115000		C\$24,809.39
2-1/2" Flange/Flange Class 300 (ASME B16.5)	6507215000		C\$24,809.39
2-1/2" Flange/Flange PN16 (ISO 7005-2)	6507315000		C\$24,809.39
2-1/2" NPT Thread/Thread (ANSI/ASME B1.20.1)	6507515000		C\$24,809.39
2-1/2" ISO7-1 Thread/Thread	6507615000		C\$24,809.39
76MM Groove/Groove (ANSI/AWWA C606)	6507075000		C\$22,553.99
3" Groove/Groove (ANSI/AWWA C606)	6507035000		C\$22,553.99
3" Flange/Flange Class 150 (ASME B16.5)	6507135000		C\$24,809.39
3" Flange/Flange Class 300 (ASME B16.5)	6507235000		C\$24,809.39
3" Flange/Flange PN16 (ISO 7005-2)	6507335000		C\$24,809.39
3" NPT Thread/Thread (ANSI/ASME B1.20.1)	6507535000		C\$24,809.39
3" ISO7-1 Thread/Thread	6507635000		C\$24,809.39
4" Groove/Groove (ANSI/AWWA C606)	6507045000		C\$25,495.82
4" Flange/Flange Class 150 (ASME B16.5)	6507145000		C\$28,045.39
4" Flange/Flange Class 300 (ASME B16.5)	6507245000		C\$28,045.39
4" Flange/Flange PN16 (ISO 7005-2)	6507345000		C\$28,045.39
6" Groove/Groove (ANSI/AWWA C606)	6507065000		C\$29,418.24
6" Flange/Flange Class 150 (ASME B16.5)	6507165000		C\$32,360.07
6" Flange/Flange Class 300 (ASME B16.5)	6507265000		C\$32,360.07
6" Flange/Flange PN16 (ISO 7005-2)	6507365000		C\$32,360.07
165MM Groove/Groove (ANSI/AWWA C606)	6507055000		C\$29,418.24

**Notes:**

Base trim does not include drain trim, alarm test line, or control valve. Please see the last page of the DDV section for optional trim components.

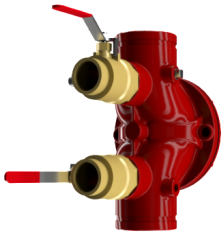
## DDV DIAPHRAGM DELUGE VALVE

- Bulletin 550

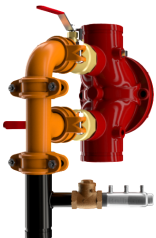


## LOWER BALL VALVE

- Lower & Upper  
 Ball Valve Option  
 X 2



## DUAL BALL VALVE



## FULL DRAIN VALVE

Description	Part Number	Short Code	List Price
<b>DRAIN TRIM OPTIONS- SELECT ONE</b>			
Lower Ball Valve - 1-1/2" & 2"	77000300		C\$ 294.19
Lower Ball Valve - 2-1/2", 3"	77000299		C\$ 686.41
Lower Ball Valve - 4", 6", 8"	9884011D		C\$ 1,176.73
Lower & Upper Ball Valve -1 -1/2" & 2"	77000300		C\$ 294.19
Lower & Upper Ball Valve - 2-1/2", 3"	77000299		C\$ 686.41
Lower & Upper Ball Valve - 4", 6", 8"	9884011D		C\$ 1,176.73
Full Drain Trim - 1-1/2" & 2"	77037003		C\$ 1,274.80
Full Drain Trim - 2-1/2", 3"	77037004		C\$ 2,157.33
Full Drain Trim - 4", 6", 8"	77037002		C\$ 4,510.80
<b>OPTIONAL TRIM</b>			
DDV Alarm Test Kit MTO	6501040001		C\$ 784.50
600 psi Gauge	98248005		C\$ 196.09
<b>CONTROL VALVES (UPPER &amp; LOWER)</b>			
Control Valve - 2-1/2"	77000302		C\$ 1,765.10
Control Valve - 3"	77000303		C\$ 1,765.10
Control Valve - 4"	77000304		C\$ 1,961.21
Control Valve - 6"	77000306		C\$ 2,549.58
S/A Control Valve 8"	77000308		C\$ 3,577.41
Control Valve w/Inlet Spool - 2-1/2"	77000271		C\$ 2,353.47
Control Valve w/Inlet Spool - 3"	77000273		C\$ 2,353.47
Control Valve w/Inlet Spool - 4"	77000274		C\$ 2,549.58
Control Valve w/Inlet Spool - 6"	77000276		C\$ 3,530.18
DDV S/A Control Valve 8" Winlet Spool	77000278		C\$ 4,941.18

## DELUGE VALVES

- **MODEL DDX DELUGE VALVE**
- Electric, Wet Pilot Line, and Dry Pilot Line Trims
- See Bulletin 519

Description	Part Number	Short Code	List Price
<b>MODEL DDX - DELUGE VALVE ONLY (GROOVED/GROOVED)</b>			
2,DELUGE-DRY,DDX,GXG RED	6103022001	2DDXR	C\$ 10,753.05
2,1/2,DELUGE-DRY,DDX,GXG RED	6103022501	25DDXR	C\$ 10,753.05
3,DELUGE-DRY,DDX,(80MM),GXG RED	6103030001	3DDXR	C\$ 11,101.15
Model DDX 76MM	6103027600	76DDXMM	C\$ 10,753.05
4,DELUGE-DRY,DDX,(100MM),GXG RED	6103040030	4DDXR	C\$ 11,345.70
6,DELUGE-DRY,DDX,(150MM),GXG RED	6103060030	6DDXR	C\$ 13,947.47
Model DDX 165MM	6103060028	165DDXMM	C\$ 13,947.47
8,DELUGE-DRY,DDX,(200MM),GXG RED	6103080003	8DDXR	C\$ 23,169.42
<b>MODEL DDX - DELUGE VALVE ONLY (FLANGE/FLANGE)</b>			
4,DELUGE-DRY,DDX,FL/FL 150 RED	6103040047	4DDXFR	C\$ 11,345.70
6,DELUGE-DRY,DDX,FL/FL,150 RED	6103060047	6DDXFR	C\$ 13,947.47
8,DELUGE-DRY,DDX,FL/FL,150 RED	6103080018	8DDXFR	C\$ 23,169.42
<b>MODEL DDX - DELUGE VALVE ONLY (FLANGE/GROOVED)</b>			
4,DELUGE-DRY,DDX,FL/GE,150 RED	6103040046	4DDXFG	C\$ 11,345.70
6,DELUGE-DRY,DDX FL/GE,150 RED	6103060048	6DDXFG	C\$ 13,947.47
165MM / PN16	6103060052	165DDXFG	C\$ 13,947.47
<b>DELUGE TRIM ONLY — SEGMENTALLY ASSEMBLED</b>			
Wet Pilot Line 2", 2-1/2" & 3"	6520702010	25DDXWPN	C\$ 6,847.49
Wet Pilot Line 4", 6" & 8"	6520703010	4DDXWPN	C\$ 6,847.49
Dry Pilot Line 2", 2-1/2" & 3"	6520802010	25DDXDPPN	C\$ 10,257.80
Dry Pilot Line 4", 6" & 8"	6520803010	4DDXDPPN	C\$ 10,257.80
Electric Release 2", 2-1/2" & 3"	6520902110	25DDXEPN	C\$ 9,585.88
Electric Release 4", 6" & 8"	6520903110	4DDXEPN	C\$ 9,585.88
<b>DELUGE TRIM ONLY — INDIVIDUAL PARTS</b>			
Wet Pilot Line 2", 2-1/2" & 3"	6520700010	25DDXWLN	C\$ 6,497.21
Wet Pilot Line 4", 6" & 8"	6520701010	4DDXWLN	C\$ 6,497.21
Dry Pilot Line 2", 2-1/2" & 3"	6520800010	25DDXDPLN	C\$ 9,607.90
Dry Pilot Line 4", 6" & 8"	6520801010	4DDXDPLN	C\$ 9,607.90
Electric Release 2", 2-1/2" & 3"	6520900110	25DDXELN	C\$ 8,896.32
Electric Release 4", 6" & 8"	6520901110	4DDXELN	C\$ 8,896.32

**Notes:**

All DDX trim includes Potter Pressure Switch





## DELUGE VALVES

- **MODEL DDX DELUGE VALVE**
- Electric, Wet Pilot Line, and Dry Pilot Line Trims
- See Bulletin 519

Description	Part Number	Short Code	List Price
<b>MODEL DDX - DELUGE VALVES FULLY ASSEMBLED - ELECTRIC TRIM</b>			
2" Electric Release	6522904110	2DDXFEN	C\$ 22,770.21
2" Electric Release w/Control Valve	6522908110	2DDXFEVN	C\$ 25,223.10
2-1/2" Electric Release	6521904110	25DDXFEN	C\$ 22,770.21
2-1/2" Electric Release w/Control Valve	6521908110	25DDXFEVN	C\$ 25,223.10
3" Electric Release	6523904110	3DDXFEN	C\$ 23,470.71
3" Electric Release w/Control Valve	6523908110	3DDXFEVN	C\$ 25,572.25
76MM Electric Release	6525905110	76DDXFEN	C\$ 22,770.21
4" Electric Release	6524904110	4DDXFEN	C\$ 23,497.41
4" Electric Release w/Control Valve	6524908110	4DDXFEVN	C\$ 25,930.26
6" Electric Release	6526904110	6DDXFEN	C\$ 26,121.52
6" Electric Release w/Control Valve	6526908110	6DDXFEVN	C\$ 28,467.21
165MM, DDX, Valve, w/Electric	6527905110	165DDXFWN	C\$ 26,121.52
8" Electric Release	6528904110	8DDXFEN	C\$ 35,114.69
8" Electric Release w/Control Valve	6528908110	8DDXFEVN	C\$ 39,837.66
<b>MODEL DDX - DELUGE VALVES FULLY ASSEMBLED - WET PILOT LINE TRIM</b>			
2" Wet Pilot Line	6522704010	2DDXFWN	C\$ 19,619.04
2" Wet Pilot Line w/Control Valve	6522708010	2DDXFWVN	C\$ 22,069.71
2-1/2" Wet Pilot Line	6521704010	25DDXFWN	C\$ 19,619.04
2-1/2" Wet Pilot Line w/Control Valve	6521708010	25DDXFWVN	C\$ 22,069.71
3" Wet Pilot Line	6523704010	3DDXFWN	C\$ 20,319.54
3" Wet Pilot Line w/Control Valve	6523708010	3DDXFWVN	C\$ 22,770.21
76MM Wet Pilot Line	6525705010	76DDXFWN	C\$ 19,619.04
4" Wet Pilot Line	6524704010	4DDXFWN	C\$ 20,806.54
4" Wet Pilot Line w/Control Valve	6524708010	4DDXFWVN	C\$ 23,241.65
6" Wet Pilot Line	6526704010	6DDXFWN	C\$ 23,430.69
6" Wet Pilot Line w/Control Valve	6526708010	6DDXFWVN	C\$ 26,844.26
165MM, DDX, Valve, w/Wet Pilot	6527705010	165DDXFWN	C\$ 23,430.39
8" Wet Pilot Line	6528704010	8DDXFWN	C\$ 34,149.54
8" Wet Pilot Line w/Control Valve	6528708010	8DDXFWVN	C\$ 41,219.10
<b>MODEL DDX - DELUGE VALVES FULLY ASSEMBLED - DRY PILOT LINE TRIM</b>			
2" Dry Pilot Line	6522804010	2DDXFDPN	C\$ 23,121.58
2" Dry Pilot Line w/Control Valve	6522808010	2DDXFDPVN	C\$ 25,572.25
2-1/2" Dry Pilot Line	6521804010	25DDXFDPN	C\$ 23,121.58
2-1/2" Dry Pilot Line w/Control Valve	6521808010	25DDXFDPVN	C\$ 25,572.25
3" Dry Pilot Line	6523804010	3DDXFDPN	C\$ 23,822.09
3" Dry Pilot Line w/Control Valve	6523808010	3DDXFDPVN	C\$ 26,272.75
76MM Dry Pilot Line	6525805010	76DDXFDPN	C\$ 23,121.58
4" Dry Pilot Line	6524804010	4DDXFDPN	C\$ 24,153.42
4" Dry Pilot Line w/Control Valve	6524808010	4DDXFDPVN	C\$ 26,590.73
6" Dry Pilot Line	6526804010	6DDXFDPN	C\$ 26,779.76
6" Dry Pilot Line w/Control Valve	6526808010	6DDXFDPVN	C\$ 30,191.14
165MM, DDX, Valve, w/ Dry Pilot line	6527805010	165DDXFDPN	C\$ 26,779.76
8" Dry Pilot Line	6528804010	8DDXFDPN	C\$ 35,757.38
8" Dry Pilot Line w/Control Valve	6528808010	8DDXFDPVN	C\$ 43,467.39

### Notes: