

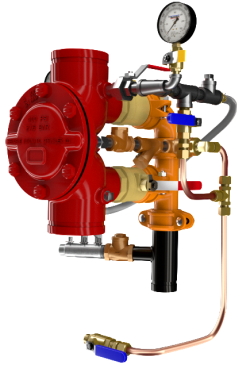
**DDV DIAPHRAGM
 DELUGE
 ELECTRIC TRIM**

- See Bulletins 551
- DDV Electric-Uses 175 PSI Solenoid Valve

| Description | Part Number | Short Code | List Price |
|--|-------------|------------|--------------|
| MODEL DDV DELUGE VALVES FULLY ASSEMBLED - ELECTRIC TRIM | | | |
| 1-1/2" Groove/Groove (ANSI/AWWA C606) | 6507002000 | . | \$ 9,060.83 |
| 1-1/2" Flange/Flange Class 150 (ASME B16.5) | 6507102000 | | \$ 9,966.90 |
| 1-1/2" Flange/Flange Class 300 (ASME B16.5) | 6507202000 | | \$ 9,966.90 |
| 1-1/2" Flange/Flange PN16 (ISO 7005-2) | 6507302000 | | \$ 9,966.90 |
| 1-1/2" NPT Thread/Thread (ANSI/ASME B1.20.1) | 6507502000 | | \$ 9,966.90 |
| 1-1/2" ISO7-1 Thread/Thread | 6507602000 | | \$ 9,966.90 |
| 2" Groove/Groove (ANSI/AWWA C606) | 6507022000 | | \$ 9,060.83 |
| 2" Flange/Flange Class 150 (ASME B16.5) | 6507122000 | | \$ 9,966.90 |
| 2" Flange/Flange Class 300 (ASME B16.5) | 6507222000 | | \$ 9,966.90 |
| 2" Flange/Flange PN16 (ISO 7005-2) | 6507322000 | | \$ 9,966.90 |
| 2" NPT Thread/Thread (ANSI/ASME B1.20.1) | 6507522000 | | \$ 9,966.90 |
| 2" ISO7-1 Thread/Thread | 6507622000 | | \$ 9,966.90 |
| 2-1/2" Groove/Groove (ANSI/AWWA C606) | 6507012000 | | \$ 10,570.97 |
| 2-1/2" Flange/Flange Class 150 (ASME B16.5) | 6507112000 | | \$ 11,628.07 |
| 2-1/2" Flange/Flange Class 300 (ASME B16.5) | 6507212000 | | \$ 11,628.07 |
| 2-1/2" Flange/Flange PN16 (ISO 7005-2) | 6507312000 | | \$ 11,628.07 |
| 2-1/2" NPT Thread/Thread (ANSI/ASME B1.20.1) | 6507512000 | | \$ 11,628.07 |
| 2-1/2" ISO7-1 Thread/Thread | 6507612000 | | \$ 11,628.07 |
| 76MM Groove/Groove (ANSI/AWWA C606) | 6507072000 | | \$ 10,570.97 |
| 3" Groove/Groove (ANSI/AWWA C606) | 6507032000 | | \$ 10,570.97 |
| 3" Flange/Flange Class 150 (ASME B16.5) | 6507132000 | | \$ 11,628.07 |
| 3" Flange/Flange Class 300 (ASME B16.5) | 6507232000 | | \$ 11,628.07 |
| 3" Flange/Flange PN16 (ISO 7005-2) | 6507332000 | | \$ 11,628.07 |
| 3" NPT Thread/Thread (ANSI/ASME B1.20.1) | 6507532000 | | \$ 11,628.07 |
| 3" ISO7-1 Thread/Thread | 6507632000 | | \$ 11,628.07 |
| 4" Groove/Groove (ANSI/AWWA C606) | 6507042000 | | \$ 12,836.18 |
| 4" Flange/Flange Class 150 (ASME B16.5) | 6507142000 | | \$ 14,119.79 |
| 4" Flange/Flange Class 300 (ASME B16.5) | 6507242000 | | \$ 14,119.79 |
| 4" Flange/Flange PN16 (ISO 7005-2) | 6507342000 | | \$ 14,119.79 |
| 6" Groove/Groove (ANSI/AWWA C606) | 6507062000 | | \$ 16,611.52 |
| 6" Flange/Flange Class 150 (ASME B16.5) | 6507162000 | | \$ 18,272.66 |
| 6" Flange/Flange Class 300 (ASME B16.5) | 6507262000 | | \$ 18,272.66 |
| 6" Flange/Flange PN16 (ISO 7005-2) | 6507362000 | | \$ 18,272.66 |
| 165MM Groove/Groove (ANSI/AWWA C606) | 6507052000 | | \$ 16,611.52 |
| 8" Groove/Groove (ANSI/AWWA C606) | 6507082000 | | \$ 34,956.90 |
| 8" Flange/Flange Class 150 (ASME B16.5) | 6507182000 | | \$ 38,452.59 |
| 8" Flange/Flange/Class 300 (ASME B16.5) | 6507282000 | | \$ 38,452.59 |
| 8" Flange/Flange PN16 (ISO 7005-2) | 6507382000 | | \$ 38,452.59 |

Notes:

Base trim does not include drain trim, alarm test line, or control valve. Please see the last page of the DDV section for optional trim components.



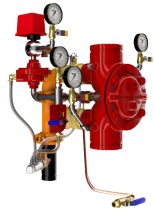
**DDV DIAPHRAGM
 DELUGE WET
 PILOT LINE**

- See Bulletin 551

| Description | Part Number | Short Code | List Price |
|---|-------------|------------|--------------|
| MODEL DDV DELUGE VALVES FULLY ASSEMBLED - WET PILOT TRIM | | | |
| 1-1/2" Groove/Groove (ANSI/AWWA C606) | 6507000000 | | \$ 7,550.69 |
| 1-1/2" Flange/Flange Class 150 (ASME B16.5) | 6507100000 | | \$ 8,305.76 |
| 1-1/2" Flange/Flange Class 300 (ASME B16.5) | 6507200000 | | \$ 8,305.76 |
| 1-1/2" Flange/Flange PN16 (ISO 7005-2) | 6507300000 | | \$ 8,305.76 |
| 1-1/2" NPT Thread/Thread (ANSI/ASME B1.20.1) | 6507500000 | | \$ 8,305.76 |
| 1-1/2" ISO7-1 Thread/Thread | 6507600000 | | \$ 8,305.76 |
| 2" Groove/Groove (ANSI/AWWA C606) | 6507020000 | | \$ 7,550.69 |
| 2" Flange/Flange Class 150 (ASME B16.5) | 6507120000 | | \$ 8,305.76 |
| 2" Flange/Flange Class 300 (ASME B16.5) | 6507220000 | | \$ 8,305.76 |
| 2" Flange/Flange PN16 (ISO 7005-2) | 6507320000 | | \$ 8,305.76 |
| 2" NPT Thread/Thread (ANSI/ASME B1.20.1) | 6507520000 | | \$ 8,305.76 |
| 2" ISO7-1 Thread/Thread | 6507620000 | | \$ 8,305.76 |
| 2-1/2" Groove/Groove (ANSI/AWWA C606) | 6507010000 | | \$ 8,305.76 |
| 2-1/2" Flange/Flange Class 150 (ASME B16.5) | 6507110000 | | \$ 9,136.34 |
| 2-1/2" Flange/Flange Class 300 (ASME B16.5) | 6507210000 | | \$ 9,136.34 |
| 2-1/2" Flange/Flange PN16 (ISO 7005-2) | 6507310000 | | \$ 9,136.34 |
| 2-1/2" NPT Thread/Thread (ANSI/ASME B1.20.1) | 6507510000 | | \$ 9,136.34 |
| 2-1/2" ISO7-1 Thread/Thread | 6507610000 | | \$ 9,136.34 |
| 76MM Groove/Groove (ANSI/AWWA C606) | 6507070000 | | \$ 8,305.76 |
| 3" Groove/Groove (ANSI/AWWA C606) | 6507030000 | | \$ 8,305.76 |
| 3" Flange/Flange Class 150 (ASME B16.5) | 6507130000 | | \$ 9,136.34 |
| 3" Flange/Flange Class 300 (ASME B16.5) | 6507230000 | | \$ 9,136.34 |
| 3" Flange/Flange PN16 (ISO 7005-2) | 6507330000 | | \$ 9,136.34 |
| 3" NPT Thread/Thread (ANSI/ASME B1.20.1) | 6507530000 | | \$ 9,136.34 |
| 3" ISO7-1 Thread/Thread | 6507630000 | | \$ 9,136.34 |
| 4" Groove/Groove (ANSI/AWWA C606) | 6507040000 | | \$ 9,815.89 |
| 4" Flange/Flange Class 150 (ASME B16.5) | 6507140000 | | \$ 10,797.49 |
| 4" Flange/Flange Class 300 (ASME B16.5) | 6507240000 | | \$ 10,797.49 |
| 4" Flange/Flange PN16 (ISO 7005-2) | 6507340000 | | \$ 10,797.49 |
| 6" Groove/Groove (ANSI/AWWA C606) | 6507060000 | | \$ 12,081.10 |
| 6" Flange/Flange Class 150 (ASME B16.5) | 6507160000 | | \$ 13,289.21 |
| 6" Flange/Flange Class 300 (ASME B16.5) | 6507260000 | | \$ 13,289.21 |
| 6" Flange/Flange PN16 (ISO 7005-2) | 6507360000 | | \$ 13,289.21 |
| 165MM Groove/Groove (ANSI/AWWA C606) | 6507050000 | | \$ 12,081.10 |
| 8" Groove/Groove (ANSI/AWWA C606) | 6507080000 | | \$ 26,567.24 |
| 8" Flange/Flange Class 150 (ASME B16.5) | 6507180000 | | \$ 29,223.96 |
| 8" Flange/Flange Class 300 (ASME B16.5) | 6507280000 | | \$ 29,223.96 |
| 8" Flange/Flange PN16 (ISO 7005-2) | 6507380000 | | \$ 29,223.96 |

Notes:

Base trim does not include drain trim, alarm test line, or control valve. Please see the last page of the DDV section for optional trim components.



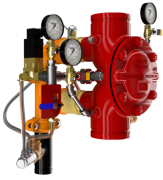
**DDV DIAPHRAGM
 DELUGE DRY
 PILOT LINE**

- See Bulletin 551

| Description | Part Number | Short Code | List Price |
|---|-------------|------------|--------------|
| MODEL DDV DELUGE VALVES FULLY ASSEMBLED - DRY PILOT TRIM | | | |
| 1-1/2" Groove/Groove (ANSI/AWWA C606) | 6507001000 | | \$ 12,081.10 |
| 1-1/2" Flange/Flange Class 150 (ASME B16.5) | 6507101000 | | \$ 13,289.21 |
| 1-1/2" Flange/Flange Class 300 (ASME B16.5) | 6507201000 | | \$ 13,289.21 |
| 1-1/2" Flange/Flange PN16 (ISO 7005-2) | 6507301000 | | \$ 13,289.21 |
| 1-1/2" NPT Thread/Thread (ANSI/ASME B1.20.1) | 6507501000 | | \$ 13,289.21 |
| 1-1/2" ISO7-1 Thread/Thread | 6507601000 | | \$ 13,289.21 |
| 2" Groove/Groove (ANSI/AWWA C606) | 6507021000 | | \$ 12,081.10 |
| 2" Flange/Flange Class 150 (ASME B16.5) | 6507121000 | | \$ 13,289.21 |
| 2" Flange/Flange Class 300 (ASME B16.5) | 6507221000 | | \$ 13,289.21 |
| 2" Flange/Flange PN16 (ISO 7005-2) | 6507321000 | | \$ 13,289.21 |
| 2" NPT Thread/Thread (ANSI/ASME B1.20.1) | 6507521000 | | \$ 13,289.21 |
| 2" ISO7-1 Thread/Thread | 6507621000 | | \$ 13,289.21 |
| 2-1/2" Groove/Groove (ANSI/AWWA C606) | 6507011000 | | \$ 14,346.31 |
| 2-1/2" Flange/Flange Class 150 (ASME B16.5) | 6507111000 | | \$ 15,780.94 |
| 2-1/2" Flange/Flange Class 300 (ASME B16.5) | 6507211000 | | \$ 15,780.94 |
| 2-1/2" Flange/Flange PN16 (ISO 7005-2) | 6507311000 | | \$ 15,780.94 |
| 2-1/2" NPT Thread/Thread (ANSI/ASME B1.20.1) | 6507511000 | | \$ 15,780.94 |
| 2-1/2" ISO7-1 Thread/Thread | 6507611000 | | \$ 15,780.94 |
| 76MM Groove/Groove (ANSI/AWWA C606) | 6507071000 | | \$ 14,346.31 |
| 3" Groove/Groove (ANSI/AWWA C606) | 6507031000 | | \$ 14,346.31 |
| 3" Flange/Flange Class 150 (ASME B16.5) | 6507131000 | | \$ 15,780.94 |
| 3" Flange/Flange Class 300 (ASME B16.5) | 6507231000 | | \$ 15,780.94 |
| 3" Flange/Flange PN16 (ISO 7005-2) | 6507331000 | | \$ 15,780.94 |
| 3" NPT Thread/Thread (ANSI/ASME B1.20.1) | 6507531000 | | \$ 15,780.94 |
| 3" ISO7-1 Thread/Thread | 6507631000 | | \$ 15,780.94 |
| 4" Groove/Groove (ANSI/AWWA C606) | 6507041000 | | \$ 16,611.52 |
| 4" Flange/Flange Class 150 (ASME B16.5) | 6507141000 | | \$ 18,272.66 |
| 4" Flange/Flange Class 300 (ASME B16.5) | 6507241000 | | \$ 18,272.66 |
| 4" Flange/Flange PN16 (ISO 7005-2) | 6507341000 | | \$ 18,272.66 |
| 6" Groove/Groove (ANSI/AWWA C606) | 6507061000 | | \$ 19,631.80 |
| 6" Flange/Flange Class 150 (ASME B16.5) | 6507161000 | | \$ 21,594.97 |
| 6" Flange/Flange Class 300 (ASME B16.5) | 6507261000 | | \$ 21,594.97 |
| 6" Flange/Flange PN16 (ISO 7005-2) | 6507361000 | | \$ 21,594.97 |
| 165MM Groove/Groove (ANSI/AWWA C606) | 6507051000 | | \$ 19,631.80 |
| 8" Groove/Groove (ANSI/AWWA C606) | 6507081000 | | \$ 34,956.90 |
| 8" Flange/Flange Class 150 (ASME B16.5) | 6507181000 | | \$ 38,452.59 |
| 8" Flange/Flange Class 300 (ASME B16.5) | 6507281000 | | \$ 38,452.59 |
| 8" Flange/Flange PN16 (ISO 7005-2) | 6507381000 | | \$ 38,452.59 |

Notes:

Base trim does not include drain trim, alarm test line, or control valve. Please see the last page of the DDV section for optional trim components.



DDV DIAPHRAGM DELUGE REMOTE RESET

- See Bulletin 550

| Description | Part Number | Short Code | List Price |
|--|-------------|------------|--------------|
| MODEL DDV DELUGE VALVE - REMOTE RESET | | | |
| 1-1/2" Groove/Groove (ANSI/AWWA C606) | 6507003000 | | \$ 12,081.10 |
| 1-1/2" Flange/Flange Class 150 (ASME B16.5) | 6507103000 | | \$ 13,289.21 |
| 1-1/2" Flange/Flange Class 300 (ASME B16.5) | 6507203000 | | \$ 13,289.21 |
| 1-1/2" Flange/Flange PN16 (ISO 7005-2) | 6507303000 | | \$ 13,289.21 |
| 1-1/2" NPT Thread/Thread (ANSI/ASME B1.20.1) | 6507503000 | | \$ 13,289.21 |
| 1-1/2" ISO7-1 Thread/Thread | 6507603000 | | \$ 13,289.21 |
| 2" Groove/Groove (ANSI/AWWA C606) | 6507023000 | | \$ 12,081.10 |
| 2" Flange/Flange Class 150 (ASME B16.5) | 6507123000 | | \$ 13,289.21 |
| 2" Flange/Flange Class 300 (ASME B16.5) | 6507223000 | | \$ 13,289.21 |
| 2" Flange/Flange PN16 (ISO 7005-2) | 6507323000 | | \$ 13,289.21 |
| 2" NPT Thread/Thread (ANSI/ASME B1.20.1) | 6507523000 | | \$ 13,289.21 |
| 2" ISO7-1 Thread/Thread | 6507623000 | | \$ 13,289.21 |
| 2-1/2" Groove/Groove (ANSI/AWWA C606) | 6507013000 | | \$ 15,101.38 |
| 2-1/2" Flange/Flange Class 150 (ASME B16.5) | 6507113000 | | \$ 16,611.52 |
| 2-1/2" Flange/Flange Class 300 (ASME B16.5) | 6507213000 | | \$ 16,611.52 |
| 2-1/2" Flange/Flange PN16 (ISO 7005-2) | 6507313000 | | \$ 16,611.52 |
| 2-1/2" NPT Thread/Thread (ANSI/ASME B1.20.1) | 6507513000 | | \$ 16,611.52 |
| 2-1/2" ISO7-1 Thread/Thread | 6507613000 | | \$ 16,611.52 |
| 76MM Groove/Groove (ANSI/AWWA C606) | 6507073000 | | \$ 15,101.38 |
| 3" Groove/Groove (ANSI/AWWA C606) | 6507033000 | | \$ 15,101.38 |
| 3" Flange/Flange Class 150 (ASME B16.5) | 6507133000 | | \$ 16,611.52 |
| 3" Flange/Flange Class 300 (ASME B16.5) | 6507233000 | | \$ 16,611.52 |
| 3" Flange/Flange PN16 (ISO 7005-2) | 6507333000 | | \$ 16,611.52 |
| 3" NPT Thread/Thread (ANSI/ASME B1.20.1) | 6507533000 | | \$ 16,611.52 |
| 3" ISO7-1 Thread/Thread | 6507633000 | | \$ 16,611.52 |
| 4" Groove/Groove (ANSI/AWWA C606) | 6507043000 | | \$ 16,611.52 |
| 4" Flange/Flange Class 150 (ASME B16.5) | 6507143000 | | \$ 18,272.66 |
| 4" Flange/Flange Class 300 (ASME B16.5) | 6507243000 | | \$ 18,272.66 |
| 4" Flange/Flange PN16 (ISO 7005-2) | 6507343000 | | \$ 18,272.66 |
| 6" Groove/Groove (ANSI/AWWA C606) | 6507063000 | | \$ 19,631.80 |
| 6" Flange/Flange Class 150 (ASME B16.5) | 6507163000 | | \$ 21,594.97 |
| 6" Flange/Flange Class 300 (ASME B16.5) | 6507263000 | | \$ 21,594.97 |
| 6" Flange/Flange PN16 (ISO 7005-2) | 6507363000 | | \$ 21,594.97 |
| 165MM Groove/Groove (ANSI/AWWA C606) | 6507053000 | | \$ 19,631.80 |
| 8" Groove/Groove (ANSI/AWWA C606) | 6507083000 | | \$ 41,948.28 |
| 8" Flange/Flange Class 150 (ASME B16.5) | 6507183000 | | \$ 46,143.11 |
| 8" Flange/Flange Class 300 (ASME B16.5) | 6507283000 | | \$ 46,143.11 |
| 8" Flange/Flange PN16 (ISO 7005-2) | 6507383000 | | \$ 46,143.11 |

Notes:

Base trim does not include drain trim, alarm test line, or control valve. Please see the last page of the DDV section for optional trim components.



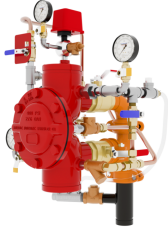
**DDV DIAPHRAGM
 DELUGE REMOTE
 RESET PRESSURE
 REGULATING**

- See Bulletin 550

| Description | Part Number | Short Code | List Price |
|--|-------------|------------|--------------|
| MODEL DDV DELUGE VALVE - REMOTE RESET PRESSURE REGULATING | | | |
| 1-1/2" Groove/Groove (ANSI/AWWA C606) | 6507007000 | | \$ 16,611.52 |
| 1-1/2" Flange/Flange Class 150 (ASME B16.5) | 6507107000 | | \$ 18,272.66 |
| 1-1/2" Flange/Flange Class 300 (ASME B16.5) | 6507207000 | | \$ 18,272.66 |
| 1-1/2" Flange/Flange PN16 (ISO 7005-2) | 6507307000 | | \$ 18,272.66 |
| 1-1/2" NPT Thread/Thread (ANSI/ASME B1.20.1) | 6507507000 | | \$ 18,272.66 |
| 1-1/2" ISO7-1 Thread/Thread | 6507607000 | | \$ 18,272.66 |
| 2" Groove/Groove (ANSI/AWWA C606) | 6507027000 | | \$ 16,611.52 |
| 2" Flange/Flange Class 150 (ASME B16.5) | 6507127000 | | \$ 18,272.66 |
| 2" Flange/Flange Class 300 (ASME B16.5) | 6507227000 | | \$ 18,272.66 |
| 2" Flange/Flange PN16 (ISO 7005-2) | 6507327000 | | \$ 18,272.66 |
| 2" NPT Thread/Thread (ANSI/ASME B1.20.1) | 6507527000 | | \$ 18,272.66 |
| 2" ISO7-1 Thread/Thread | 6507627000 | | \$ 18,272.66 |
| 2-1/2" Groove/Groove (ANSI/AWWA C606) | 6507017000 | | \$ 18,121.65 |
| 2-1/2" Flange/Flange Class 150 (ASME B16.5) | 6507117000 | | \$ 19,933.83 |
| 2-1/2" Flange/Flange Class 300 (ASME B16.5) | 6507217000 | | \$ 19,933.83 |
| 2-1/2" Flange/Flange PN16 (ISO 7005-2) | 6507317000 | | \$ 19,933.83 |
| 2-1/2" NPT Thread/Thread (ANSI/ASME B1.20.1) | 6507517000 | | \$ 19,933.83 |
| 2-1/2" ISO7-1 Thread/Thread | 6507617000 | | \$ 19,933.83 |
| 76MM Groove/Groove (ANSI/AWWA C606) | 6507077000 | | \$ 18,121.65 |
| 3" Groove/Groove (ANSI/AWWA C606) | 6507037000 | | \$ 18,121.65 |
| 3" Flange/Flange Class 150 (ASME B16.5) | 6507137000 | | \$ 19,933.83 |
| 3" Flange/Flange Class 300 (ASME B16.5) | 6507237000 | | \$ 19,933.83 |
| 3" Flange/Flange PN16 (ISO 7005-2) | 6507337000 | | \$ 19,933.83 |
| 3" NPT Thread/Thread (ANSI/ASME B1.20.1) | 6507537000 | | \$ 19,933.83 |
| 3" ISO7-1 Thread/Thread | 6507637000 | | \$ 19,933.83 |
| 4" Groove/Groove (ANSI/AWWA C606) | 6507047000 | | \$ 19,631.80 |
| 4" Flange/Flange Class 150 (ASME B16.5) | 6507147000 | | \$ 21,594.97 |
| 4" Flange/Flange Class 300 (ASME B16.5) | 6507247000 | | \$ 21,594.97 |
| 4" Flange/Flange PN16 (ISO 7005-2) | 6507347000 | | \$ 21,594.97 |
| 6" Groove/Groove (ANSI/AWWA C606) | 6507067000 | | \$ 22,652.07 |
| 6" Flange/Flange Class 150 (ASME B16.5) | 6507167000 | | \$ 24,917.28 |
| 6" Flange/Flange Class 300 (ASME B16.5) | 6507267000 | | \$ 24,917.28 |
| 6" Flange/Flange PN16 (ISO 7005-2) | 6507367000 | | \$ 24,917.28 |
| 165MM Groove/Groove (ANSI/AWWA C606) | 6507057000 | | \$ 22,652.07 |

Notes:

Base trim does not include drain trim, alarm test line, or control valve. Please see the last page of the DDV section for optional trim components.



**DDV DIAPHRAGM
 DELUGE DRY
 PILOT PRESSURE
 REGULATING**

- See Bulletin 550
- Dry Pilot Pressure Regulating

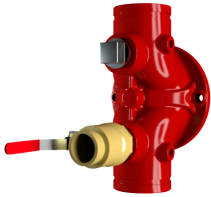
| Description | Part Number | Short Code | List Price |
|---|-------------|------------|--------------|
| MODEL DDV DELUGE VALVE - DRY PILOT PRESSURE REGULATING | | | |
| 1-1/2" Groove/Groove (ANSI/AWWA C606) | 6507005000 | | \$ 15,101.38 |
| 1-1/2" Flange/Flange Class 150 (ASME B16.5) | 6507105000 | | \$ 16,611.52 |
| 1-1/2" Flange/Flange Class 300 (ASME B16.5) | 6507205000 | | \$ 16,611.52 |
| 1-1/2" Flange/Flange PN16 (ISO 7005-2) | 6507305000 | | \$ 16,611.52 |
| 1-1/2" NPT Thread/Thread (ANSI/ASME B1.20.1) | 6507505000 | | \$ 16,611.52 |
| 1-1/2" ISO7-1 Thread/Thread | 6507605000 | | \$ 16,611.52 |
| 2" Groove/Groove (ANSI/AWWA C606) | 6507025000 | | \$ 15,101.38 |
| 2" Flange/Flange Class 150 (ASME B16.5) | 6507125000 | | \$ 16,611.52 |
| 2" Flange/Flange Class 300 (ASME B16.5) | 6507225000 | | \$ 16,611.52 |
| 2" Flange/Flange PN16 (ISO 7005-2) | 6507325000 | | \$ 16,611.52 |
| 2" NPT Thread/Thread (ANSI/ASME B1.20.1) | 6507525000 | | \$ 16,611.52 |
| 2" ISO7-1 Thread/Thread | 6507625000 | | \$ 16,611.52 |
| 2-1/2" Groove/Groove (ANSI/AWWA C606) | 6507015000 | | \$ 17,366.59 |
| 2-1/2" Flange/Flange Class 150 (ASME B16.5) | 6507115000 | | \$ 19,103.25 |
| 2-1/2" Flange/Flange Class 300 (ASME B16.5) | 6507215000 | | \$ 19,103.25 |
| 2-1/2" Flange/Flange PN16 (ISO 7005-2) | 6507315000 | | \$ 19,103.25 |
| 2-1/2" NPT Thread/Thread (ANSI/ASME B1.20.1) | 6507515000 | | \$ 19,103.25 |
| 2-1/2" ISO7-1 Thread/Thread | 6507615000 | | \$ 19,103.25 |
| 76MM Groove/Groove (ANSI/AWWA C606) | 6507075000 | | \$ 17,366.59 |
| 3" Groove/Groove (ANSI/AWWA C606) | 6507035000 | | \$ 17,366.59 |
| 3" Flange/Flange Class 150 (ASME B16.5) | 6507135000 | | \$ 19,103.25 |
| 3" Flange/Flange Class 300 (ASME B16.5) | 6507235000 | | \$ 19,103.25 |
| 3" Flange/Flange PN16 (ISO 7005-2) | 6507335000 | | \$ 19,103.25 |
| 3" NPT Thread/Thread (ANSI/ASME B1.20.1) | 6507535000 | | \$ 19,103.25 |
| 3" ISO7-1 Thread/Thread | 6507635000 | | \$ 19,103.25 |
| 4" Groove/Groove (ANSI/AWWA C606) | 6507045000 | | \$ 19,631.80 |
| 4" Flange/Flange Class 150 (ASME B16.5) | 6507145000 | | \$ 21,594.97 |
| 4" Flange/Flange Class 300 (ASME B16.5) | 6507245000 | | \$ 21,594.97 |
| 4" Flange/Flange PN16 (ISO 7005-2) | 6507345000 | | \$ 21,594.97 |
| 6" Groove/Groove (ANSI/AWWA C606) | 6507065000 | | \$ 22,652.07 |
| 6" Flange/Flange Class 150 (ASME B16.5) | 6507165000 | | \$ 24,917.28 |
| 6" Flange/Flange Class 300 (ASME B16.5) | 6507265000 | | \$ 24,917.28 |
| 6" Flange/Flange PN16 (ISO 7005-2) | 6507365000 | | \$ 24,917.28 |
| 165MM Groove/Groove (ANSI/AWWA C606) | 6507055000 | | \$ 22,652.07 |

Notes:

Base trim does not include drain trim, alarm test line, or control valve. Please see the last page of the DDV section for optional trim components.

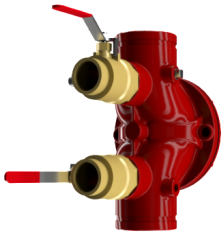
DDV DIAPHRAGM DELUGE VALVE

- Bulletin 550

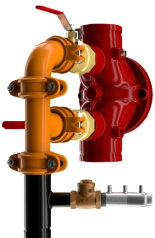


LOWER BALL VALVE

- Lower & Upper
 Ball Valve Option
 X 2



DUAL BALL VALVE



FULL DRAIN VALVE

| Description | Part Number | Short Code | List Price |
|---|-------------|------------|-------------|
| DRAIN TRIM OPTIONS- SELECT ONE | | | |
| Lower Ball Valve - 1-1/2" & 2" | 77000300 | | \$ 226.52 |
| Lower Ball Valve - 2-1/2", 3" | 77000299 | | \$ 528.54 |
| Lower Ball Valve - 4", 6", 8" | 9884011D | | \$ 906.08 |
| Lower & Upper Ball Valve -1 -1/2" & 2" | 77000300 | | \$ 226.52 |
| Lower & Upper Ball Valve - 2-1/2", 3" | 77000299 | | \$ 528.54 |
| Lower & Upper Ball Valve - 4", 6", 8" | 9884011D | | \$ 906.08 |
| Full Drain Trim - 1-1/2" & 2" | 77037003 | | \$ 981.60 |
| Full Drain Trim - 2-1/2", 3" | 77037004 | | \$ 1,661.14 |
| Full Drain Trim - 4", 6", 8" | 77037002 | | \$ 3,473.32 |
| OPTIONAL TRIM | | | |
| DDV Alarm Test Kit MTO | 6501040001 | | \$ 604.07 |
| 600 psi Gauge | 98248005 | | \$ 150.99 |
| CONTROL VALVES (UPPER & LOWER) | | | |
| Control Valve - 2-1/2" | 77000302 | | \$ 1,359.13 |
| Control Valve - 3" | 77000303 | | \$ 1,359.13 |
| Control Valve - 4" | 77000304 | | \$ 1,510.14 |
| Control Valve - 6" | 77000306 | | \$ 1,963.18 |
| S/A Control Valve 8" | 77000308 | | \$ 2,754.61 |
| Control Valve w/Inlet Spool - 2-1/2" | 77000271 | | \$ 1,812.17 |
| Control Valve w/Inlet Spool - 3" | 77000273 | | \$ 1,812.17 |
| Control Valve w/Inlet Spool - 4" | 77000274 | | \$ 1,963.18 |
| Control Valve w/Inlet Spool - 6" | 77000276 | | \$ 2,718.24 |
| DDV S/A Control Valve 8" Winlet Spool | 77000278 | | \$ 3,804.71 |

DELUGE VALVES

- **MODEL DDX DELUGE VALVE**
- Electric, Wet Pilot Line, and Dry Pilot Line Trims
- See Bulletin 519

| Description | Part Number | Short Code | List Price |
|--|-------------|------------|--------------|
| MODEL DDX - DELUGE VALVE ONLY (GROOVED/GROOVED) | | | |
| 2,DELUGE-DRY,DDX,GXG RED | 6103022001 | 2DDXR | \$ 8,279.85 |
| 2,1/2,DELUGE-DRY,DDX,GXG RED | 6103022501 | 25DDXR | \$ 8,279.85 |
| 3,DELUGE-DRY,DDX,(80MM),GXG RED | 6103030001 | 3DDXR | \$ 8,547.89 |
| Model DDX 76MM | 6103027600 | 76DDXMM | \$ 8,279.85 |
| 4,DELUGE-DRY,DDX,(100MM),GXG RED | 6103040030 | 4DDXR | \$ 8,736.20 |
| 6,DELUGE-DRY,DDX,(150MM),GXG RED | 6103060030 | 6DDXR | \$ 10,739.56 |
| Model DDX 165MM | 6103060028 | 165DDXMM | \$ 10,739.56 |
| 8,DELUGE-DRY,DDX,(200MM),GXG RED | 6103080003 | 8DDXR | \$ 17,840.47 |
| MODEL DDX - DELUGE VALVE ONLY (FLANGE/FLANGE) | | | |
| 4,DELUGE-DRY,DDX,FL/FL 150 RED | 6103040047 | 4DDXFR | \$ 8,736.20 |
| 6,DELUGE-DRY,DDX,FL/FL,150 RED | 6103060047 | 6DDXFR | \$ 10,739.56 |
| 8,DELUGE-DRY,DDX,FL/FL,150 RED | 6103080018 | 8DDXFR | \$ 17,840.47 |
| MODEL DDX - DELUGE VALVE ONLY (FLANGE/GROOVED) | | | |
| 4,DELUGE-DRY,DDX,FL/GE,150 RED | 6103040046 | 4DDXFGR | \$ 8,736.20 |
| 6,DELUGE-DRY,DDX FL/GE,150 RED | 6103060048 | 6DDXFGR | \$ 10,739.56 |
| 165MM / PN16 | 6103060052 | 165DDXFG | \$ 10,739.56 |
| DELUGE TRIM ONLY — SEGMENTALLY ASSEMBLED | | | |
| Wet Pilot Line 2", 2-1/2" & 3" | 6520702010 | 25DDXWPN | \$ 5,272.58 |
| Wet Pilot Line 4", 6" & 8" | 6520703010 | 4DDXWPN | \$ 5,272.58 |
| Dry Pilot Line 2", 2-1/2" & 3" | 6520802010 | 25DDXDPPN | \$ 7,898.52 |
| Dry Pilot Line 4", 6" & 8" | 6520803010 | 4DDXDPPN | \$ 7,898.52 |
| Electric Release 2", 2-1/2" & 3" | 6520902110 | 25DDXEPN | \$ 7,381.13 |
| Electric Release 4", 6" & 8" | 6520903110 | 4DDXEPN | \$ 7,381.13 |
| DELUGE TRIM ONLY — INDIVIDUAL PARTS | | | |
| Wet Pilot Line 2", 2-1/2" & 3" | 6520700010 | 25DDXWLN | \$ 5,002.86 |
| Wet Pilot Line 4", 6" & 8" | 6520701010 | 4DDXWLN | \$ 5,002.86 |
| Dry Pilot Line 2", 2-1/2" & 3" | 6520800010 | 25DDXDPLN | \$ 7,398.09 |
| Dry Pilot Line 4", 6" & 8" | 6520801010 | 4DDXDPLN | \$ 7,398.09 |
| Electric Release 2", 2-1/2" & 3" | 6520900110 | 25DDXELN | \$ 6,850.17 |
| Electric Release 4", 6" & 8" | 6520901110 | 4DDXELN | \$ 6,850.17 |

Notes:

All DDX trim includes Potter Pressure Switch



DELUGE VALVES

- **MODEL DDX DELUGE VALVE**
- Electric, Wet Pilot Line, and Dry Pilot Line Trims
- See Bulletin 519

| Description | Part Number | Short Code | List Price |
|--|-------------|------------|--------------|
| MODEL DDX - DELUGE VALVES FULLY ASSEMBLED - ELECTRIC TRIM | | | |
| 2" Electric Release | 6522904110 | 2DDXFEN | \$ 17,533.08 |
| 2" Electric Release w/Control Valve | 6522908110 | 2DDXFEVN | \$ 19,421.81 |
| 2-1/2" Electric Release | 6521904110 | 25DDXFEN | \$ 17,533.08 |
| 2-1/2" Electric Release w/Control Valve | 6521908110 | 25DDXFEVN | \$ 19,421.81 |
| 3" Electric Release | 6523904110 | 3DDXFEN | \$ 18,072.46 |
| 3" Electric Release w/Control Valve | 6523908110 | 3DDXFEVN | \$ 19,690.65 |
| 76MM Electric Release | 6525905110 | 76DDXFEN | \$ 17,533.08 |
| 4" Electric Release | 6524904110 | 4DDXFEN | \$ 18,093.02 |
| 4" Electric Release w/Control Valve | 6524908110 | 4DDXFEVN | \$ 19,966.32 |
| 6" Electric Release | 6526904110 | 6DDXFEN | \$ 20,113.59 |
| 6" Electric Release w/Control Valve | 6526908110 | 6DDXFEVN | \$ 21,919.78 |
| 165MM, DDX, Valve, w/Electric | 6527905110 | 165DDXFVN | \$ 20,113.59 |
| 8" Electric Release | 6528904110 | 8DDXFEN | \$ 27,038.34 |
| 8" Electric Release w/Control Valve | 6528908110 | 8DDXFEVN | \$ 30,675.03 |
| MODEL DDX - DELUGE VALVES FULLY ASSEMBLED - WET PILOT LINE TRIM | | | |
| 2" Wet Pilot Line | 6522704010 | 2DDXFVN | \$ 15,106.67 |
| 2" Wet Pilot Line w/Control Valve | 6522708010 | 2DDXFVNV | \$ 16,993.69 |
| 2-1/2" Wet Pilot Line | 6521704010 | 25DDXFVN | \$ 15,106.67 |
| 2-1/2" Wet Pilot Line w/Control Valve | 6521708010 | 25DDXFVNV | \$ 16,993.69 |
| 3" Wet Pilot Line | 6523704010 | 3DDXFVN | \$ 15,646.06 |
| 3" Wet Pilot Line w/Control Valve | 6523708010 | 3DDXFVNV | \$ 17,533.08 |
| 76MM Wet Pilot Line | 6525705010 | 76DDXFVN | \$ 15,106.67 |
| 4" Wet Pilot Line | 6524704010 | 4DDXFVN | \$ 16,021.05 |
| 4" Wet Pilot Line w/Control Valve | 6524708010 | 4DDXFVNV | \$ 17,896.09 |
| 6" Wet Pilot Line | 6526704010 | 6DDXFVN | \$ 18,041.65 |
| 6" Wet Pilot Line w/Control Valve | 6526708010 | 6DDXFVNV | \$ 20,670.10 |
| 165MM, DDX, Valve, w/Wet Pilot | 6527705010 | 165DDXFVN | \$ 18,041.42 |
| 8" Wet Pilot Line | 6528704010 | 8DDXFVN | \$ 26,295.17 |
| 8" Wet Pilot Line w/Control Valve | 6528708010 | 8DDXFVNV | \$ 31,738.74 |
| MODEL DDX - DELUGE VALVES FULLY ASSEMBLED - DRY PILOT LINE TRIM | | | |
| 2" Dry Pilot Line | 6522804010 | 2DDXFDPN | \$ 17,803.63 |
| 2" Dry Pilot Line w/Control Valve | 6522808010 | 2DDXFDPVN | \$ 19,690.65 |
| 2-1/2" Dry Pilot Line | 6521804010 | 25DDXFDPN | \$ 17,803.63 |
| 2-1/2" Dry Pilot Line w/Control Valve | 6521808010 | 25DDXFDPVN | \$ 19,690.65 |
| 3" Dry Pilot Line | 6523804010 | 3DDXFDPN | \$ 18,343.03 |
| 3" Dry Pilot Line w/Control Valve | 6523808010 | 3DDXFDPVN | \$ 20,230.03 |
| 76MM Dry Pilot Line | 6525805010 | 76DDXFDPN | \$ 17,803.63 |
| 4" Dry Pilot Line | 6524804010 | 4DDXFDPN | \$ 18,598.15 |
| 4" Dry Pilot Line w/Control Valve | 6524808010 | 4DDXFDPVN | \$ 20,474.88 |
| 6" Dry Pilot Line | 6526804010 | 6DDXFDPN | \$ 20,620.44 |
| 6" Dry Pilot Line w/Control Valve | 6526808010 | 6DDXFDPVN | \$ 23,247.20 |
| 165MM, DDX, Valve, w/ Dry Pilot line | 6527805010 | 165DDXFDPN | \$ 20,620.44 |
| 8" Dry Pilot Line | 6528804010 | 8DDXFDPN | \$ 27,533.21 |
| 8" Dry Pilot Line w/Control Valve | 6528808010 | 8DDXFDPVN | \$ 33,469.92 |

Notes: