




**Model FA2 Grooved Flange
PN10 / PN16**

cULus Listed, FM Approved

FA2 Grooved Flange Technical Data

<p>Operating Specifications Maximum Working Pressure: 300 psi (20.7 bar) Operating Temperature -30 °F to 230 °F (-34 °C to 110 °C)</p> <p>Material Specifications Body: ASTM A536 Grade 65-45-12 Ductile Iron</p> <p>Design Specification Groove: AWWA-C606 Flange: EN1092-2 PN10 [2"-6" (50-150 mm)] EN1092-2 PN16 (All sizes)</p>	<p>Bolt Specification ISO 898-1 Grade 8.8</p> <p>Available Finishes Housing: Red powder-coating Hot dipped galvanized (ASTM A-153) Bolts: Zinc Electroplating</p> <p>Listings and Approvals cULus Listed (All sizes) FM Approved [2"-8" (50-200 mm)]</p>	
---	---	---

FA2 Grooved Flange Dimensions

Figure 1

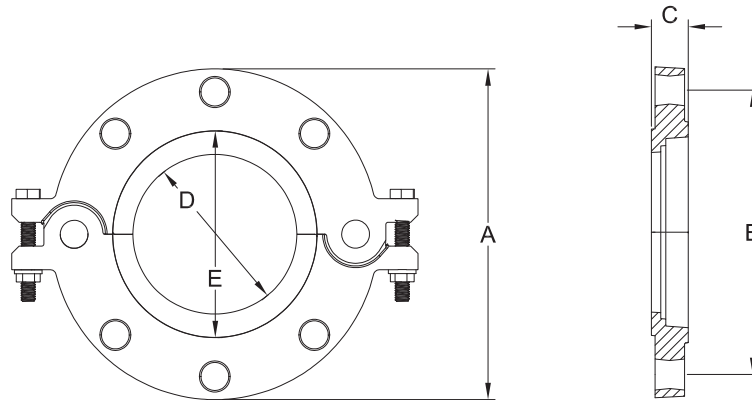


Table A

Nominal Size in (mm)	Pipe O.D. in (mm)	Max. End Load lbs (KN)	Bolts Size in	Number of Bolts	Listings and Approvals	Dimensions					Weight lb (kg)
						A in (mm)	B in (mm)	C in (mm)	D in (mm)	E in (mm)	
2 (50)	2.375 (60.3)	1034 (4.6)	M16	4	cULus, FM	6-7/16 (164)	4-15/16 (125)	1 (25)	2-3/8 (60)	3-1/16 (78)	3.28 (1.64)
2-1/2 (65)	2.875 (73.0)	1493 (6.64)	M16	4	cULus, FM	7-3/16 (182)	5-11/16 (145)	1 (25)	2-7/8 (73)	3-11/16 (93)	4.75 (2.16)
76 mm	3.000 (76.1)	1641 (7.30)	M16	4	cULus, FM	7-3/16 (182)	5-11/16 (145)	1 (25)	3 (76)	3-11/16 (93)	4.75 (2.16)
3 (80)	3.500 (88.9)	2226 (9.90)	M16	8	cULus, FM	7-5/8 (194)	3-5/16 (160)	1 (25)	3-1/2 (89)	4-1/4 (107)	5.54 (2.52)
4 (100)	4.500 (114.3)	3687 (16.40)	M16	8	cULus, FM	8-1/2 (216)	7-1/16 (180)	1 (25)	4-1/2 (114)	5-3/16 (131)	5.83 (2.65)
139 mm	5.500 (139.7)	5508 (24.50)	M16	8	cULus, FM	9-3/4 (247)	8-1/4 (210)	1 (25)	5-1/2 (140)	6-3/16 (157)	7.11 (3.23)
165 mm	6.500 (165.1)	7689 (34.20)	M20	8	cULus, FM	11-1/8 (282)	9-7/16 (240)	1 (25)	6-1/2 (165)	7-5/16 (185)	7.74 (3.52)
6 (150)	6.625 (168.3)	8003 (35.60)	M20	8	cULus, FM	11-1/8 (282)	9-7/16 (240)	1 (25)	6-5/8 (168)	7-5/16 (185)	7.52 (3.42)
8 (200)	8.625 (219.1)	13556 (60.30)	M20	12	cULus, FM	13-3/16 (335)	11-5/8 (295)	1-1/16 (27)	8-5/8 (219)	9-1/4 (234)	13.2 (6)
10 (250)	10.750 (273.0)	21042 (93.6)	M24	12	cULus	15-15/16 (405)	14 (355)	1-3/16 (30)	10-3/4 (273)	12-1/8 (308)	17.23 (7.84)
12 (300)	12.750 (323.9)	29630 (131.8)	M24	12	cULus	18-1/8 (460)	16-1/8 (410)	1-1/4 (32)	12-3/4 (324)	14-1/8 (359)	32.56 (14.8)

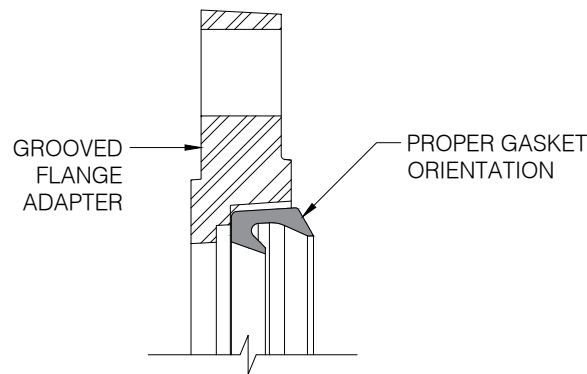
FA2 Pipe Compatibility

Table B

Nominal Size in (mm)	Groove Type	Pipe	Approvals
2 (50)	Rolled	10	cULus, FM
	Cut, Rolled	40	
2-1/2 (65)	Rolled	10	cULus, FM
	Cut, Rolled	40	
76.1 mm	Rolled	10	FM
	Cut, Rolled	40	FM
		ISO 4200	cULus
3 (80)	Rolled	10	cULus, FM
	Cut, Rolled	40	
4 (100)	Rolled	10	cULus, FM
	Cut, Rolled	40	
139.7 mm	Rolled	10	FM
	Cut, Rolled	40	FM
		ISO 4200	cULus
165.1 mm	Rolled	10	FM
	Cut, Rolled	40	FM
		ISO 4200	cULus
6 (150)	Rolled	10	cULus, FM
	Cut, Rolled	40	
8 (200)	Rolled	10	cULus, FM
	Cut, Rolled	40	
10 (250)	Rolled	10	cULus
	Cut, Rolled	40	
12 (300)	Rolled	10	cULus
	Cut, Rolled	40	

FA2 Installation Guidance

Figure 2



Note: Proper installation of the gasket is critical to ensure that the model FA2 grooved flange seals appropriately against a mating flange. The flat heel of the gasket must be installed against the inside of the model FA2 grooved flange, such that the end-face seal lip contacts the mating flange face and the pipe-OD seal lip rests around the seal surface on the pipe as shown. Installer should inspect gasket after installation on pipe and prior to making up the mating flange. If a gap behind the end-face seal lip is visible the gasket is installed properly. If the flat heel surface is visible, the gasket is improperly installed and must be removed and reinstalled in the correct orientation.