

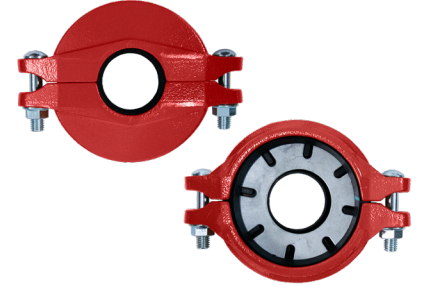


Model RCD1 Grooved Reducing Coupling with Steel Ring

cULus Listed, FM Approved
300 psi (20.7 bar)

RCD1 Grooved Reducing Coupling with Steel Ring Technical Data

Operating Specifications Maximum Working Pressure: 300 psi (20.7 bar) Operating Temperature -30 °F to 230 °F (-34 °C to 110 °C)	Bolt Specification: ISO 898-1 Grade 8.8 Available Finishes Housing: Red powder-coating Hot dipped galvanized (ASTM A-153) Bolts: Zinc Electroplating
Material Specifications Housings: ASTM A536 Grade 65-45-12 Ductile Iron Gasket: Pre-lubricated Grade E EPDM	Listings and Approvals cULus Listed FM Approved
Design Specification: Groove: AWWA-C606	



RCD1 Grooved Reducing Coupling with Steel Ring Dimensions

Figure 1

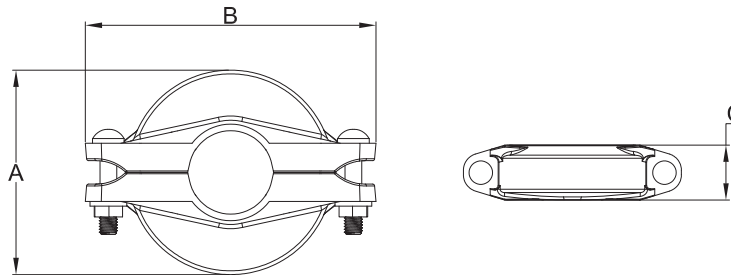


Table A

Nominal Size in (mm)	Pipe O.D. in (mm)	Max. End Load Lbs (KN)	Pipe End Gap in (mm)	Bolt Size x Length mm	Deflection		Dimensions			Weight lb (kg)
					Per Coupling Deg.	Per Pipe in/ft (mm/m)	A in (mm)	B in (mm)	C in (mm)	
2 x 1-1/2 (50 x 40)	2.375 x 1.900 (60.3 x 48.3)	1327 (5.91)	1/16 (1.6)	M10 x 55	1.52°	5/16 (27)	3-1/4 (82)	5-1/8 (130)	1-13/16 (46)	1.83 (0.83)
2-1/2 x 1-1/4 (65 x 32)	2.875 x 1.660 (73.0 x 42.2)	1945 (8.66)	1/16 (1.6)	M10 x 55	1.25°	1/4 (22)	3-13/16 (97)	6 (151)	1-13/16 (46)	2.54 (1.15)
2-1/2 x 1-1/2 (65 x 40)	2.875 x 1.900 (73.0 x 48.3)	1945 (8.66)	1/16 (1.6)	M10 x 55	1.25°	1/4 (22)	3-13/16 (97)	6 (151)	1-13/16 (46)	2.65 (1.20)
2-1/2 x 2 (65 x 50)	2.875 x 2.375 (73.0 x 60.3)	1945 (8.66)	1/16 (1.6)	M10 x 55	1.25°	1/4 (22)	3-13/16 (97)	6 (151)	1-13/16 (46)	2.31 (1.05)
76 mm x 1-1/2 (76 x 40)	3.000 x 1.900 (76.1 x 48.3)	2114 (9.41)	1/16 (1.6)	M10 x 55	1.2°	1/4 (21)	3-13/16 (97)	6 (151)	1-13/16 (46)	2.65 (1.20)
76 mm x 2" (76 x 50)	3.000 x 2.375 (76.1 x 60.3)	2114 (9.41)	1/16 (1.6)	M10 x 55	1.2°	1/4 (21)	3-13/16 (97)	6 (151)	1-13/16 (46)	2.31 (1.05)
76 mm x 2-1/2 (76 x 65)	3.000 x 2.875 (76.1 x 73.0)	2114 (9.41)	1/16 (1.6)	M10 x 55	1.2°	1/4 (21)	3-13/16 (97)	6 (151)	1-13/16 (46)	2.42 (1.1)
3 x 1-1/2 (80 x 40)	3.500 X 1.900 (88.9 X 48.3)	2885 (12.84)	1/16 (1.6)	M12 x 65	1.03°	1/4 (18)	4-7/16 (112)	6-9/16 (167)	1-13/16 (46)	3.53 (1.6)
3 x 2 (80 x 50)	3.500 x 2.375 (88.9 x 60.3)	2885 (12.84)	1/16 (1.6)	M12 x 65	1.03°	1/4 (18)	4-7/16 (112)	6-9/16 (167)	1-13/16 (46)	3.09 (1.4)
3 x 2-1/2 (80 x 65)	3.500 x 2.875 (88.9 x 73.0)	2885 (12.84)	1/16 (1.6)	M12 x 65	1.03°	1/4 (18)	4-7/16 (112)	6-9/16 (167)	1-13/16 (46)	2.78 (1.26)
3 X 76 mm (80 x 76)	3.500 x 3.000 (88.9 x 76.1)	2885 (12.84)	1/16 (1.6)	M12 x 65	1.03°	1/4 (18)	4-1/2 (114)	6-9/16 (167)	1-13/16 (46)	2.78 (1.26)
4 x 2 (100 x 50)	4.500 x 2.375 (114.3 x 60.3)	4769 (21.22)	1/8 (3.2)	M12 x 65	1.6°	5/16 (28)	5-9/16 (141)	8 (200)	2 (50)	5.40 (2.45)
4 x 2-1/2 (100 x 65)	4.500 x 2.875 (114.3 x 73.0)	4769 (21.22)	1/8 (3.2)	M12 x 65	1.6°	5/16 (28)	5-9/16 (141)	8 (200)	2 (50)	4.68 (2.12)
4 x 3 (100 x 80)	4.500 x 3.500 (114.3 x 88.9)	4769 (21.22)	1/8 (3.2)	M12 x 65	1.6°	5/16 (28)	5-9/16 (141)	8 (200)	2 (50)	4.63 (2.10)
165 mm x 4 (165 x 114)	6.500 x 4.500 (165.1 x 114.3)	9950 (44.27)	1/8 (3.2)	M16 x 80	1.12°	1/4 (20)	7-3/4 (197)	10-13/16 (275)	2-1/16 (52)	9.26 (4.20)
6 x 4 (150 x 100)	6.625 x 4.500 (168.3 x 114.3)	10340 (46)	1/8 (3.2)	M16 x 80	1.1°	1/4 (20)	8 (199)	10-13/16 (275)	2-1/16 (52)	9.26 (4.20)
6 x 165 mm (150 x 165)	6.625 x 6.000 (168.3 x 165.1)	10340 (46)	1/8 (3.2)	M16 x 80	1.1°	1/4 (20)	8 (199)	10-13/16 (275)	2-1/16 (52)	8.36 (3.8)
8 x 6 (200 x 150)	8.625 x 6.625 (219.1 x 168.3)	17524 (77.97)	1/8 (3.2)	M20 x 110	0.83°	3/16 (15)	10-1/16 (256)	13-1/4 (336)	2-1/4 (58)	15.66 (7.10)

Nominal Size in (mm)	Groove Type	Pipe	Approvals
1-1/2 x 1-1/4 (40 x 32)	Rolled	10	cULus, FM
		Mega-Flow Schedule 7	cULus, FM
		Eddy Flow Schedule 7	cULus, FM
		Fire-Flo Schedule 7	FM
	Cut, Rolled	40	cULus, FM
2 x 1-1/2 (50 x 40)	Rolled	10	cULus, FM
		Mega-Flow Schedule 7	cULus, FM
		Eddy Flow Schedule 7	cULus, FM
		Hydroflow Schedule 7	cULus, FM
	Fire-Flo Schedule 7	FM	
Cut, Rolled	40	cULus, FM	
2-1/2 x 1-1/4 (65 x 32)	Rolled	10	cULus, FM
		Mega-Flow Schedule 7	cULus, FM
		Eddy Flow Schedule 7	cULus, FM
		Hydroflow Schedule 7	cULus, FM
	Fire-Flo Schedule 7	FM	
Cut, Rolled	40	cULus, FM	
2-1/2 x 1-1/2 (65 x 40)	Rolled	10	cULus, FM
		Mega-Flow Schedule 7	cULus, FM
		Eddy Flow Schedule 7	cULus, FM
		Hydroflow Schedule 7	cULus, FM
	Fire-Flo Schedule 7	FM	
Cut, Rolled	40	cULus, FM	
2-1/2 x 2 (65 x 50)	Rolled	10	cULus, FM
		Mega-Flow Schedule 7	cULus, FM
		Eddy Flow Schedule 7	cULus, FM
		Hydroflow Schedule 7	cULus, FM
	Fire-Flo Schedule 7	FM	
Cut, Rolled	40	cULus, FM	
76 mm x 1-1/2 (76 x 40)	Rolled	10	FM
		ISO 4200 G	FM
		ISO 4200 F	FM
		ISO 4200 E	FM
	Cut, Rolled	40	FM
		GB / T3091	cULus

RCD1 Pipe Compatibility (cont.)

Table B

Nominal Size in (mm)	Groove Type	Pipe	Approvals
76 mm x 2 (76 x 50)	Rolled	10	FM
		ISO 4200 G	FM
		ISO 4200 F	FM
		ISO 4200 E	FM
	Cut, Rolled	40	FM
GB / T3091		cULus	
76 mm x 2-1/2 (76 x 65)	Rolled	10	FM
	Cut, Rolled	GB / T3091	cULus
		40	FM
3 x 2 (80 x 50)	Rolled	10	cULus, FM
		Mega-Flow Schedule 7	cULus, FM
		Eddy Flow Schedule 7	cULus, FM
		Hydroflow Schedule 7	cULus, FM
		Fire-Flo Schedule 7	FM
	Cut, Rolled	40	cULus, FM
3 x 2-1/2 (80 x 65)	Rolled	10	cULus, FM
		Mega-Flow Schedule 7	cULus, FM
		Eddy Flow Schedule 7	cULus, FM
		Hydroflow Schedule 7	cULus, FM
		Fire-Flo Schedule 7	FM
	Cut, Rolled	40	cULus, FM
3 x 76 mm (80 x 76)	Rolled	10	FM
		ISO 4200 G	FM
		ISO 4200 F	FM
		ISO 4200 E	FM
	Cut, Rolled	40	FM
		GB / T3091	cULus
4 x 2 (100 x 50)	Rolled	10	cULus, FM
		Mega-Flow Schedule 7	cULus, FM
		Eddy Flow Schedule 7	cULus, FM
		Hydroflow Schedule 7	cULus, FM
		Fire-Flo Schedule 7	FM
	Cut, Rolled	40	cULus, FM

RCD1 Pipe Compatibility (cont.)

Table B

Nominal Size in (mm)	Groove Type	Pipe	Approvals
4 x 2-1/2 (100 x 65)	Rolled	10	cULus, FM
		Mega-Flow Schedule 7	cULus, FM
		Eddy Flow Schedule 7	cULus, FM
		Hydroflow Schedule 7	cULus, FM
	Fire-Flo Schedule 7	FM	
	Cut, Rolled	40	cULus, FM
4 x 3 (100 x 80)	Rolled	10	cULus, FM
		Mega-Flow Schedule 7	cULus, FM
		Eddy Flow Schedule 7	cULus, FM
		Hydroflow Schedule 7	cULus, FM
	Fire-Flo Schedule 7	FM	
	Cut, Rolled	40	cULus, FM
165 mm x 4 (165 x 100)	Cut, Rolled	40	FM
		GB / T3091	cULus
6 x 4 (150 x 100)	Rolled	10	cULus, FM
		Mega-Flow Schedule 7	cULus, FM
		Eddy Flow Schedule 7	cULus, FM
		Hydroflow Schedule 7	cULus, FM
	Fire-Flo Schedule 7	FM	
	Cut, Rolled	40	cULus, FM
6 x 165 mm (150 x 165)	Rolled	10	cULus, FM
	Cut, Rolled	GB / T3091	FM
		40	cULus, FM
8 x 6 (200 x 150)	Rolled	10	cULus, FM
		Mega-Flow Schedule 7	cULus
	Cut, Rolled	40	cULus, FM

Notes:

1. 10 refers to Schedule 10 steel pipe in accordance with NFPA 13.
2. 40 refers to Schedule 40 steel pipe in accordance with NFPA 13.
3. Fire-Flo Schedule 7 refers to Youngstown Tube Schedule 7 pipes.
4. Mega-Flow Schedule 7 refers to Listed Mega-Flow steel Pipe manufactured by Wheatland Tube Co.
5. Eddy Flow Schedule 7 refers to Listed Eddy Flow steel pipe manufactured by Bull Moose Tube Co.
6. Hydroflow Schedule 7 refers to Listed Nucor Hydroflow steel pipe manufactured by Nucor Tubular Products Inc.
7. 1-1/4" x 1-1/2" RCD coupling does not use a steel reinforcing ring; the similarity in outlet sizing does not require one and all 3rd party qualification was performed without using a steel ring.

P/N 999997/0682