

Reliable®

Model FA1 Grooved Flange ANSI125/150

cULus Listed, FM Approved

FA1 Grooved Flange Technical Data

Operating Specifications
Maximum Working Pressure:

See Table B

Operating Temperature

-30 °F to 230 °F (-34 °C to 110 °C)

Material Specifications
Body: ASTM A536 Grade 65-45-12 Ductile Iron

Design Specification
Groove: AWWA-C606

Flange: ASME B16.5 Class 125/150

Bolt Specification

SAE J429 Grade 5

Available Finishes
Housing:

Standard orange paint

Hot dipped galvanized (ASTM A-153)

Bolts:

Zinc Electroplating

Listings and Approvals

cULus Listed

FM Approved



FA1 Grooved Flange Dimensions

Figure 1

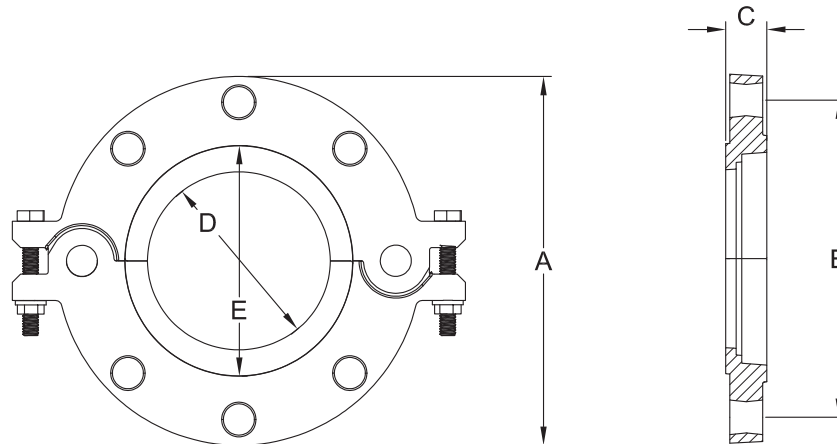


Table A

Nominal Size in (mm)	Pipe O.D. in (mm)	Max. End Load lbs (KN)	Bolts Size in	Number of Bolts	Dimensions					Weight lb (kg)
					A in (mm)	B in (mm)	C in (mm)	D in (mm)	E in (mm)	
2 (50)	2.375 (60.3)	1330 (5.71)	5/8	4	6-1/8 (155)	4-3/4 (121)	1 (25)	2-3/8 (60)	3-1/16 (78)	4.19 (1.90)
2-1/2 (65)	2.875 (73.0)	1950 (8.37)	5/8	4	7-1/8 (180)	5-1/2 (140)	1 (25)	2-7/8 (73)	3-11/16 (93)	4.87 (2.21)
3 (80)	3.500 (88.9)	2880 (12.41)	5/8	4	7-1/2 (190)	6 (153)	1 (25)	3-1/2 (89)	4-3/16 (107)	5.18 (2.35)
4 (100)	4.500 (114.3)	4770 (20.51)	5/8	8	9-1/16 (230)	7-1/2 (191)	1 (25)	4-1/2 (114)	5-3/16 (131)	7.28 (3.30)
6 (150)	6.625 (168.3)	10340 (44.47)	3/4	8	11 (280)	8-1/2 (241)	1 (25)	6-5/8 (165)	7-1/4 (185)	10.54 (4.78)
8 (200)	8.625 (219.1)	17520 (75.37)	3/4	8	13-11/16 (345)	11-3/4 (299)	1-1/16 (27)	8-5/8 (219)	9-1/4 (234)	6.58 (14.51)
10 (250)	10.750 (273.0)	27210 (164.71)	1	12	15-15/16 (405)	14-1/4 (362)	1-3/16 (30)	10-3/4 (273)	11-9/16 (294)	24.81 (11.25)
12 (300)	12.750 (323.9)	38280 (164.71)	1	12	19-1/8 (485)	17 (432)	1-1/4 (32)	12-3/4 (324)	13-7/16 (341)	36.93 (16.75)

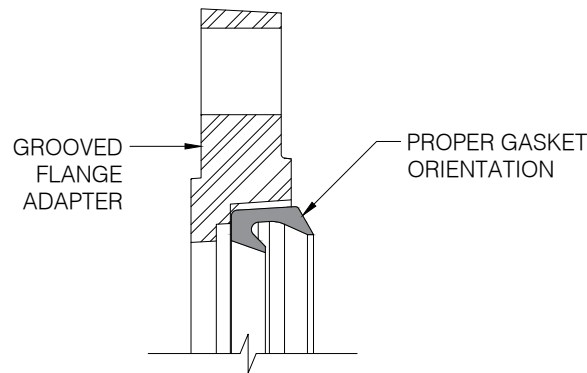
FA1 Pipe Compatibility

Table B

Nominal Size in (mm)	Groove Type	Pipe	Approvals	Pressure Rating psi (bar)
2 (50)	Rolled	10	cULus, FM	300 (20.7)
	Cut, Rolled	40		
2-1/2 (65)	Rolled	10	cULus, FM	300 (20.7)
	Cut, Rolled	40		
3 (80)	Rolled	10	cULus, FM	300 (20.7)
	Cut, Rolled	40		
4 (100)	Rolled	10	cULus, FM	300 (20.7)
	Cut, Rolled	40		
6 (150)	Rolled	10	cULus, FM	300 (20.7)
	Cut, Rolled	40		
8 (200)	Rolled	10	cULus	300 (20.7)
	Cut, Rolled	40	cULus	300 (20.7)
			FM	250 (17.2)
10 (250)	Rolled	10	cULus	300 (20.7)
	Cut, Rolled	40	cULus	300 (20.7)
			FM	250 (17.2)
12 (300)	Rolled	10	cULus	300 (20.7)
	Cut, Rolled	40	cULus	300 (20.7)
			FM	250 (17.2)

FA1 Installation Guidance

Figure 2



Note: Proper installation of the gasket is critical to ensure that the model FA1 grooved flange seals appropriately against a mating flange. The flat heel of the gasket must be installed against the inside of the model FA1 grooved flange, such that the end-face seal lip contacts the mating flange face and the pipe-OD seal lip rests around the seal surface on the pipe as shown. Installer should inspect gasket after installation on pipe and prior to making up the mating flange. If a gap behind the end-face seal lip is visible the gasket is installed properly. If the flat heel surface is visible, the gasket is improperly installed and must be removed and reinstalled in the correct orientation.

P/N 9999970651