

Reliable®

Model CRS1 Grooved Cross Short Radius

cULus Listed, FM Approved
300 psi (20.7 bar)

CRS1 Grooved Cross Short Radius Technical Data

Operating Specifications

Maximum Working Pressure:
300 psi (20.7 bar)

Material Specifications

Body: ASTM A536 Grade 65-45-12 Ductile Iron

Design Specification

Groove: AWWA-C606

Available Finishes

Housing:

Standard orange paint
Hot dipped galvanized (ASTM A-153)

Listings and Approvals

cULus Listed
FM Approved



CRS1 Grooved Cross Short Radius Dimensions

Figure 1

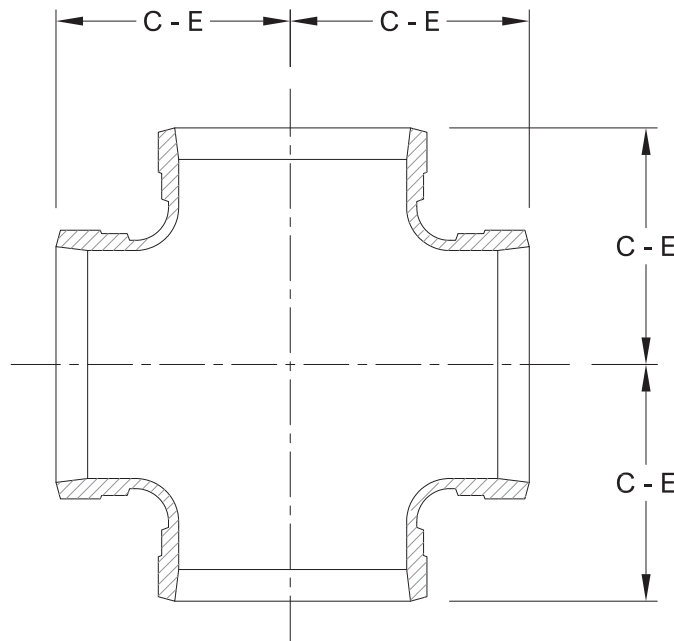


Table A

Nominal Size in (mm)	Pipe O.D. in/mm	Dimension C - E in (mm)	Weight lb (kg)	Run Friction Loss Eq Feet of Pipe (m)	Branch Friction Loss Eq Feet of Pipe (m)
2 (50)	2.375 (60.3)	2-3/4 (70)	2.65 (1.2)	3.6 (1.1)	8.5 (2.6)
2-1/2 (65)	2.875 (73.0)	3 (76)	4.19 (1.9)	4.3 (1.3)	10.8 (3.3)
3 (80)	3.500 (88.9)	3-3/8 (86)	4.41 (2)	4.9 (1.5)	13.1 (4)
4 (100)	4.500 (114.3)	4 (102)	7.83 (3.55)	6.9 (2.1)	16.1 (4.9)
6 (150)	6.625 (168.3)	5-1/2 (140)	17.09 (7.75)	9.8 (3)	24.9 (7.6)
8 (200)	8.625 (219.1)	6-7/8 (174)	28.99 (13.15)	13.1 (4)	33.1 (10.1)

P/N 9999970646