

Reliable®

Model ROH1 One-Hole Wrap Around CPVC Pipe Strap

cULus Listed

Product Description

The Reliable ROH1 CPVC Pipe Strap is designed to support non-metallic CPVC pipe horizontally from the side of a beam, stud, sheet steel with a minimum thickness of 20 gauge (.0359" / .911mm), or another structural support member used as an attaching structure. When used with vertical piping or when installed on the top surface of an attaching structure, the ROH1 CPVC Pipe Strap acts as a guide only and does not directly support the pipe it is installed upon. The supplied fasteners are only suitable for installing the ROH1 into wood; when installing into sheet steel a different, metal-appropriate screw must be used. The ROH1 CPVC Pipe Strap includes flared features to prevent damage to the pipe as it slides along the pipe length to the desired installation position. The ROH1 CPVC Pipe Strap is available for NPS / DN pipe sizes from 3/4" (20mm) to 2" (50mm).

Maintenance

The owner is responsible for maintaining the fire protection system in proper operating condition. Any system maintenance or testing that involves placing a control valve out of service will eliminate the fire protection that is provided by the fire protection system.

The Reliable CPVC Pipe Straps and associated equipment shall periodically be given a thorough inspection and test. NFPA 25, "Inspection, Testing and Maintenance of Water Based Fire Protection Systems," provides minimum maintenance requirements.

Guarantee

For Reliable Automatic Sprinkler Co., Inc. guarantee, terms, and conditions, visit www.reliablesprinkler.com.



Model ROH1 One-Hole Wrap Around CPVC Pipe Strap

Ordering Information

Specify the following when ordering:

Model

- ROH1 One-Hole CPVC Pipe Strap

Nominal Size

- 3/4" (20 mm)
- 1" (25 mm)
- 1-1/4" (32 mm)
- 1-1/2" (40 mm)
- 2" (50 mm)

Reliable Model ROH1 One-Hole Wrap Around CPVC Pipe Strap

Technical Specifications

Material: ASTM A576 Gr 1020 (equivalent to AISI 1020 steel)

Surface Treatment: Hot-dip Galvanizing per ASTM A123 on raw material prior to forming (pre-galvanizing)

Manufacturing Process: Cold-Formed Die Stamping

Application: Non-metallic CPVC Pipe for use in Fire Protection Systems

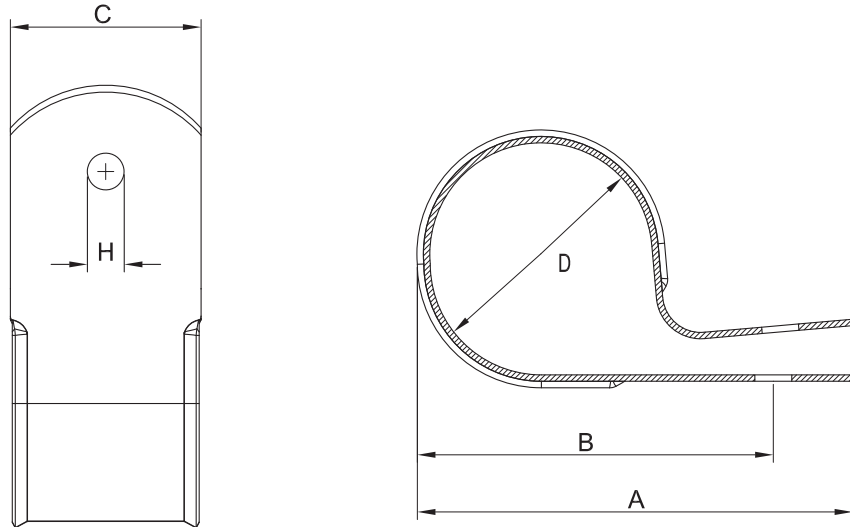
Listings and Approvals

cULus Listed



Reliable Model ROH1 One-Hole Wrap Around CPVC Pipe Strap Specification and Dimensions

Figure 1



Dimensions in. (mm)

Table A

Nominal Pipe Size	D	A	B	C	H
3/4 (20)	1-1/16 (27)	2-3/8 (60)	1-1/4 (32)	1-3/16 (30)	7/32 (6)
1 (25)	1-5/16 (33)	2-11/16 (68)	1-7/16 (37)	1-3/16 (30)	7/32 (6)
1-1/4 (32)	1-11/16 (42)	3-1/16 (78)	1-5/8 (42)	1-3/16 (30)	7/32 (6)
1-1/2 (40)	1-7/8 (48)	3-5/16 (84)	1-3/4 (45)	1-3/16 (30)	7/32 (6)
2 (50)	2-3/8 (60)	3-13/16 (97)	2 (51)	1-3/16 (30)	7/32 (6)

WARNINGS

1. The ROH1 CPVC pipe strap and the supported fire protection system must be installed in accordance with NFPA 13, the installation requirements of the pipe manufacturer, and all applicable installation standards.
2. The ROH1 CPVC pipe strap shall only be used to install cULus Listed CPVC pipe.
3. Ensure that the compatibility of the ROH1 CPVC pipe strap, pipe, and fire protection system components with the surrounding environment prior to installation.
4. Only attach the ROH1 CPVC pipe strap to structural components that are adequate in all respects, including integrity, placement, and fitness-for-purpose, to support the ROH1 CPVC pipe strap and the fire protection system.
5. Ensure that the screw attaching the ROH1 CPVC pipe strap does not puncture or damage any systems or equipment.

6. Do NOT use impact tools to install the ROH1 CPVC pipe strap. Use of impact tools may damage the ROH1 CPVC pipe strap, supported pipe, and structure to which the ROH1 CPVC strap is attached.
7. The screw used to install the ROH1 CPVC pipe strap must be tightened adequately to hold the pipe strap firmly to the structure. Do NOT over-tighten the screw to avoid damaging the screw, ROH1 CPVC pipe strap, or structure to which the ROH1 CPVC pipe strap is attached.
8. When the provided screw is not used, the installer is responsible for selecting a washer head fastener capable of supporting the required loads.
9. Failure to follow these warnings and installation instructions may result in product malfunction, up to and including failure of the fire protection system.

Installation

1. The ROH1 CPVC pipe strap acts as a pipe support ONLY when installed on the side surface of an attaching structure where the tab with the fastener hole is located above the pipe as shown in Figure 2. The ROH1 CPVC strap acts as only as a guide, not a support, for any orientation where the pipe is vertically positioned or where the ROH1 CPVC strap is installed on the top surface of an attaching structure (as shown in Figure 3). Incorrect installations are shown in Figure 4 and Figure 5; these should NEVER be performed using this product. Note that in all figures, the vertical arrow points in the downward direction to the floor to clearly illustrate correct, incorrect, and guide-only installation orientations of this product.

2. Slide the strap(s) over the end of the pipe and into position or wrap the strap(s) around the pipe and move it into position on the pipe. Ensure that the mounting tab is oriented above the pipe as shown in Figure 2 below, note the arrow indicating the down direction. It is acceptable to fit all straps onto a piece of pipe prior to installing fasteners that secure the pipe and straps to the attaching structure.

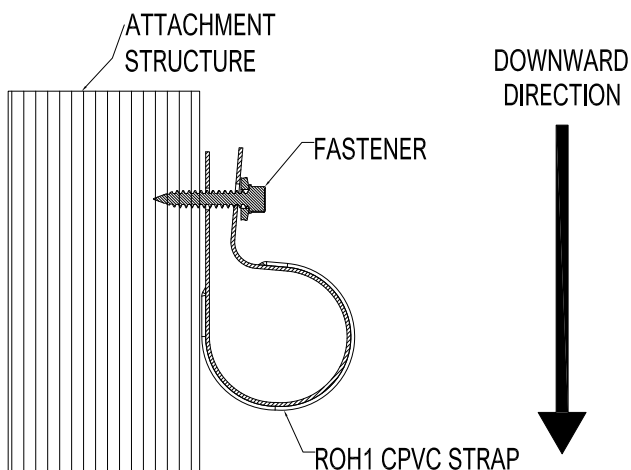
3. Orient the strap(s) and mount to the selected attaching structure surface using either the fastener provided or an appropriate alternate fastener. Space straps in accordance with NFPA 13, the pipe manufacturer's installation instruction, and all other applicable requirements. Pre-drilling is not required when supplied fasteners are used. The supplied fasteners may be installed with either a 5/16-inch or 8 mm socket.

4. When installing the ROH1 CPVC pipe strap into sheet steel a self-drilling screw (also called a tek-type screw) must be used; an appropriate screw for this product must have a minimum diameter of #12 (5.5 mm) and a minimum length of 1-inch (25 mm). Pre-drilling is not required when a screw of this type is used.

5. Inspect the ROH1 CPVC Pipe Strap and other fire protection system components following installation to ensure that the products have been installed correctly and that the pipe is secured to the attaching structure in accordance with all application requirements and in a manner suitable for use in a fire protection system.

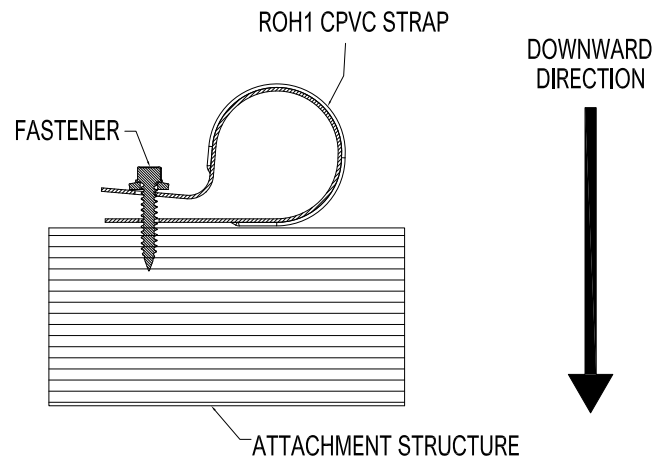
Correct Installation as a Pipe Support

Figure 2



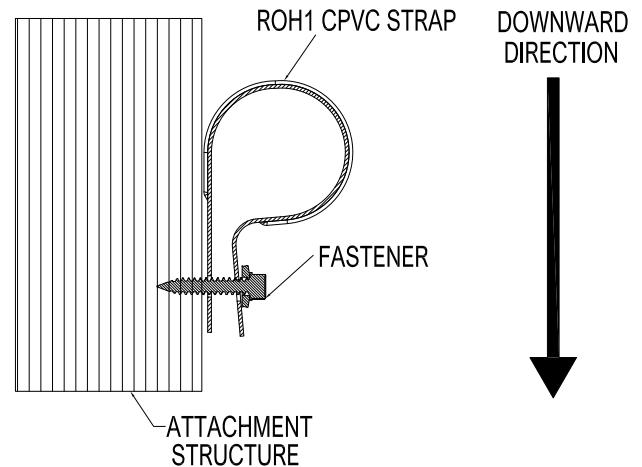
Correct Installation as a Pipe Guide Only

Figure 3



Incorrect Installation of Upside-Down CPVC Strap

Figure 4



Incorrect Installation to Bottom Surface of Attaching Structure

Figure 5

