

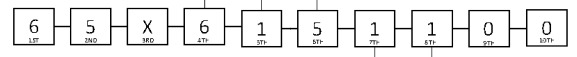
EX VALVE TRIMS PART NUMBER CONFIGURATION

SELECTIONS IN **BOLD>** ARE STANDARD OPTIONS

- EX VALVE TRIMS PART NUMBER CONFIGURATION**
- 0 = NONE (NO VALVE, LOOSE OR SEGMENTALLY ASSEMBLED)
 - 1 = 2" GE X GE
 - 2 = 2" GE X GE
 - 3 = 3" GE X GE
 - 4 = 4" GE X GE
 - 5 = 76MM GE X GE (NO CONTROL VALVE)
 - 6 = 6" GE X GE
 - 7 = 165MM GE X GE (NO CONTROL VALVE)
 - 8 = 8" GE X GE
 - A = 4" FLANGE¹ INLET X GE OUTLET
 - B = 4" FLANGE¹ INLET X FLANGE² OUTLET
 - C = 4" FN16 FLANGE² INLET X GE OUTLET
 - D = 4" FN16 FLANGE² INLET X FN16 FLANGE² OUTLET
 - E = 6" FLANGE² INLET X GE OUTLET
 - F = 6" FLANGE² INLET X FLANGE² OUTLET
 - G = 6" FN16 FLANGE² INLET X GE OUTLET
 - H = 6" FN16 FLANGE² INLET X FN16 FLANGE² OUTLET
 - J = 165MM FN16 FLANGE² INLET X GE OUTLET
 - K = 8" FLANGE² INLET X FLANGE² OUTLET
 - L = 8" FN16 FLANGE² INLET X FN16 FLANGE² OUTLET

- VALVE COLOURS - FINISHES**
- 0 = NO VALVE (LOOSE OR SEGMENTALLY ASSEMBLED)
 - 1 = BLACK PAINTED VALVE
 - 2 = RED PAINTED VALVE
 - 3 = RED PAINTED VALVE WITH U.S. SOURCED IRM
 - 4 = CCC APPROVED VALVE⁴
 - 5 = BLACK PAINTED VALVE WITH U.S. SOURCED IRM

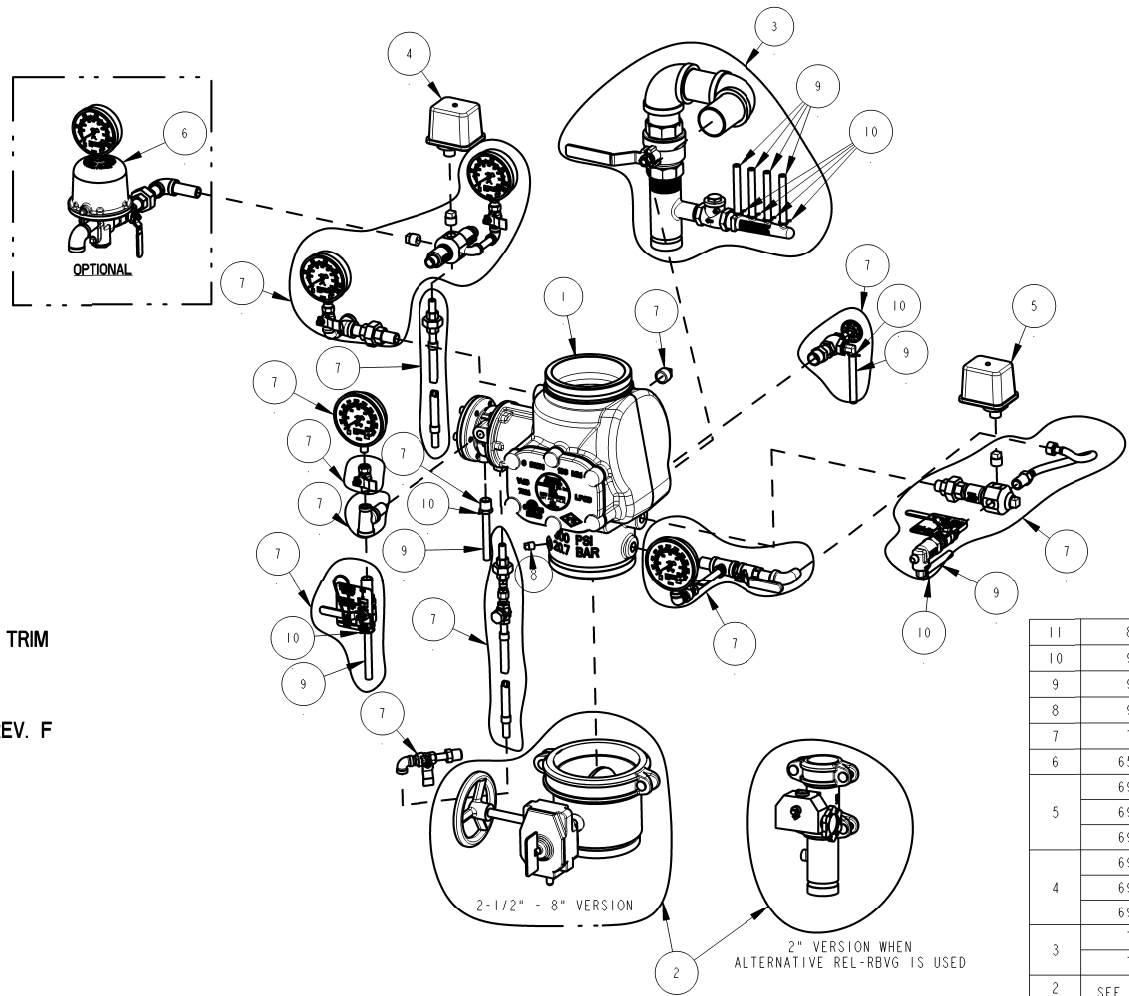
- ASSEMBLY OPTIONS FOR VALVES**
- 0 = LOOSE TRIM FOR 2"-3" VALVES^{1,2,3}
 - 1 = LOOSE TRIM FOR 4"-8" VALVES^{1,2,3}
 - 2 = SEGMENTALLY ASSEMBLED FOR 2"-3" VALVES^{1,2,3}
 - 3 = SEGMENTALLY ASSEMBLED FOR 4"-8" VALVES^{1,2,3}
 - 4 = FULLY ASSEMBLED TO EX VALVE W/O CONTROL VALVE
 - 5 = FULLY ASSEMBLED TO EX VALVE WITH CONTROL VALVE



- NOTES:**
1. CONTROL VALVE IS SUPPLIED ON LOSS OF PRESSURE IN THE VALVE LINE.
 2. VALVE ASSEMBLY IS SUPPLIED WITH HOSE AND HOSE CLAMP.
 3. VALVE ASSEMBLY IS SUPPLIED WITH HOSE AND HOSE CLAMP.
 4. CONTROL VALVE IS SUPPLIED WITH HOSE AND HOSE CLAMP.
 5. CONTROL VALVE IS SUPPLIED WITH HOSE AND HOSE CLAMP.
 6. CONTROL VALVE IS SUPPLIED WITH HOSE AND HOSE CLAMP.
 7. CONTROL VALVE IS SUPPLIED WITH HOSE AND HOSE CLAMP.
 8. CONTROL VALVE IS SUPPLIED WITH HOSE AND HOSE CLAMP.
 9. CONTROL VALVE IS SUPPLIED WITH HOSE AND HOSE CLAMP.
 10. CONTROL VALVE IS SUPPLIED WITH HOSE AND HOSE CLAMP.

- FINISHES**
- 0 = NONE
 - 1 = POTTER FM, CULUS APPROVED
 - 2 = SYSTEM SENSOR W/ULC APPROVED
 - 3 = SYSTEM SENSOR W/ULC APPROVED

- ACCCELERATOR TRIM**
- 0 = NONE
 - 1 = W/BL ACCELERATOR



MODEL EX DRY PIPE VALVE TRIM
CA-271 P/N 8924123
ASSEMBLY P/N 65X6061010 REV. F

PART NUMBER TABLE			
SIZE	VALVE ASSEMBLY BLACK (ITEM 1)	VALVE ASSEMBLY RED (ITEM 1)	CONTROL VALVE S/A (ITEM 2)
2" (50MM) GR/GR	6101021010	6101021015	77000301
2-1/2" (65MM) GR/GR	6101025010	6101025015	77000302
3" (80MM) GR/GR	6101031010	6101031015	77000303
76MM GR/GR	N/A	6101051015	N/A
4" (100MM) GR/GR	6101041010	6101041015	77000304
4" (100MM) FL/GR CLASS 150	6101041020	6101041025	N/A
4" (100MM) FL/GR PN16	N/A	6101041045	
4" (100MM) FL/FL CLASS 150	6101041030	6101041035	
4" (100MM) FL/FL PN16	N/A	6101041055	
6" (168MM) GR/GR	6101061010	6101061015	77000306
6" (168MM) FL/GR CLASS 150	6101061020	6101061025	N/A
6" (168MM) FL/GR PN16	N/A	6101061045	
6" (168MM) FL/FL CLASS 150	6101061030	6101061035	
6" (168MM) FL/FL PN16	N/A	6101061055	
165MM GR/GR	N/A	6101065015	N/A
165MM FL/GR CLASS 150		6101065025	
165MM FL/GR PN16		6101065045	
8" (200MM) GR/GR	6101081010	6101081015	77000308
8" (200MM) FL/FL CLASS 150	6101081030	6101081035	N/A
8" (200MM) FL/FL PN16	N/A	6101081055	

11	89097903	THREAD SEALANT (NOT SHOWN)		A/R
10	95306255	HOSE CLAMP		8
9	96686756	HOSE, PVC, CLEAR, 1/2" O.D. X 6 FT		I
8	98614403	PIPE, PLUG, IRON, SQUARE HEAD, 1/4	W/ SPOOL ONLY	I
7	77031005	SUBASSEMBLY, BASE TRIM		I
6	6516000013	KIT, ACCELERATOR TRIM (OPTIONAL)	(SHOWN IN YELLOW)	I
5	6990006382	SWITCH, PRESSURE, POTTER, PS10-2, ALARM		I
	6999992360	SWITCH, PRESSURE, SYSTEM SENSOR, EPSA10-2, ALARM		
	6999991212	SWITCH, PRESSURE, SYSTEM SENSOR, EPS10-2, ALARM		
4	6990019313	SWITCH, PRESSURE, POTTER, PS25-2, SYSTEM		I
	6999992361	SWITCH, PRESSURE, SYSTEM SENSOR, EPSA40-2, SYSTEM		
3	6999991340	SWITCH, PRESSURE, SYSTEM SENSOR, EPSA0-2, SYSTEM		I
	77031006	TRIM, SUBASSEMBLY, DRAIN, 2"-3"	(SHOWN IN BLUE)	
2	77031007	TRIM, SUBASSEMBLY, DRAIN, 4"-8"		I
	SEE PART NUMBER TABLE	SUBASSEMBLY, CONTROL VALVE		
1	SEE PART NUMBER TABLE	ASSEMBLY, VALVE, EX		I

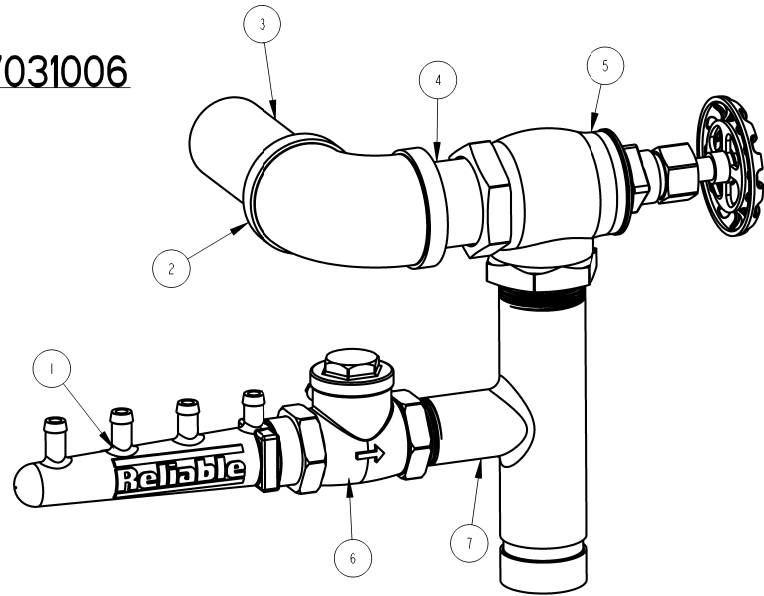
BILL OF MATERIALS

MODEL EX DRY PIPE VALVE TRIM
 CA-271 P/N 89241236
 SUBASSEMBLY P/N 77031005 REV. C



36	89141112	TIE, RETAINING		9
35	9884011A	VALVE, BALL, 1/2 NPTF X 1/2 NPTM		1
34	98840237	VALVE, BALL, 1/4" NPTF x 1/4" NPTM		5
33	98840188	VALVE, CHECK, 1/4" NPTM x 1/4" NPTF		1
32	98840147	CHECK VALVE, 1/4, NPT, POPPET TYPE INLINE		1
31	98840103	VALVE, ANGLE, 1/2"		1
30	98815201	UNION, 1/4, IRON, G. J., GALV.		2
29	98815200	UNION, 1/2, IRON, G. J., GALV.		2
28	98761649	TEE, 1/2X1/4X1/2, GALVANIZED		2
27	98751008	FITTING, MULTIPORT, 1/2x1/2x1/2x1/2x1/4x1/4		1
26	98751005	FITTING, MULTIPORT, 3/4x1/2x1/2x1/2x1/2		1
25	98727607	STRAINER, 1/4"		1
24	98614401	PIPE, PLUG, IRON, SQUARE HEAD, 3/4		2
23	98604406	PIPE, PLUG, IRON, SQUARE HEAD, 1/2		3
22	98543226	NIPPLE, 1/4X1-1/2, GALVANIZED STEEL		3
21	98543225	NIPPLE, 1/4X2-1/2, GALVANIZED STEEL		1
20	98543224	NIPPLE, 1/4X4-1/2, GALVANIZED STEEL		1
19	98543223	NIPPLE, 1/2X1-1/2, GALVANIZED STEEL		6
18	98543212	NIPPLE, 1/2XCLOSE, GALVANIZED STEEL		1
17	98543209	NIPPLE, 1/2X2, GALVANIZED STEEL		4
16	98248001	GAUGE, WATER PRESSURE (0-300 PSI)		2
15	98248000	GAUGE, AIR PRESSURE (0-80 PSI)		2
14	98174408	ELBOW, STREET, 1/4", GALV.		2
13	98174404	ELBOW, 1/4", MALL IRON, GALV.		3
12	98174400	ELBOW, STREET, 1/2", GALV.		1
11	98048022	BUSHING, REDUCER, 3/4X1/2, GALVANIZED		1
10	98048000	BUSHING, REDUCER, 1/2X1/4, GALVANIZED		1
9	96920944	HOSE, FLEXIBLE, STAINLESS STEEL, 1/4 NPT X 18 LONG		2
8	96920912	FLEX LINE, 12		1
7	96816906	VALVE, CHECK, MALE 1/2, MALE 1/2		3
6	96606607	TEE, 1/2X1/2X1/4, GALVANIZED		1
5	92056810	CONNECTOR, 3/8" ID TUBE x 1/2" NPT		2
4	92056704	CONNECTOR, ELBOW, 3/8" ID TUBE x 1/2" NPT		2
3	78653800	ASSEMBLY, BALL DRIP, 1/2"		1
2	78653004	ASSEMBLY, VALVE CAUTION STATION, 1/2"		1
1	78653000	ASSEMBLY, MANUAL EMERGENCY STATION		1
ITEM NO.	PART NO.	DESCRIPTION	REMARKS	QTY.
BILL OF MATERIALS				

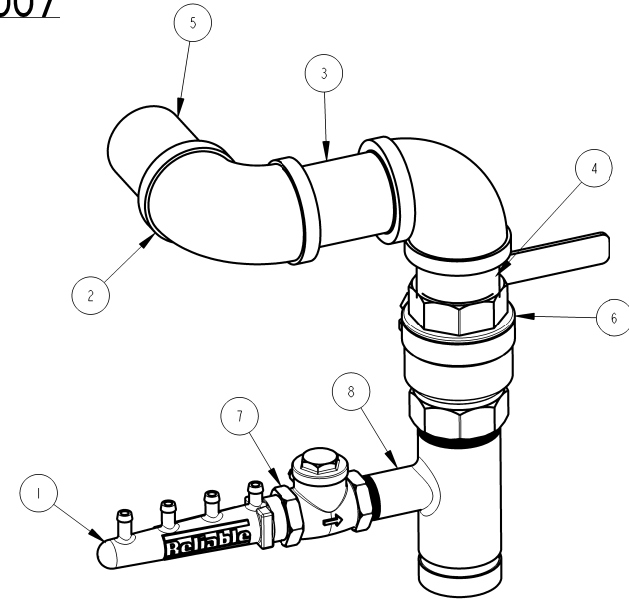
77031006



7	9101423C	MANIFOLD, 1-1/4 X 1-1/4 X 1, GRV/THD/THD		1
6	98840145	SWING CHECK VALVE, 1" NPT		1
5	98840106	VALVE, ANGLE, 1 1/4		1
4	98543285	NIPPLE, 1-1/4XCLOSE,GALVANIZED STEEL		1
3	98543250	NIPPLE, 1-1/4X4,GALVANIZED STEEL		1
2	98174414	ELBOW, 1-1/4", MALL IRON, GALV.		1
1	91004299	MANIFOLD, DRAIN, BARBED, 6-3/16		1
ITEM NO.	PART NO.	DESCRIPTION	REMARKS	QTY.

BILL OF MATERIALS

77031007

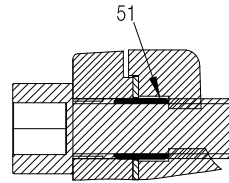
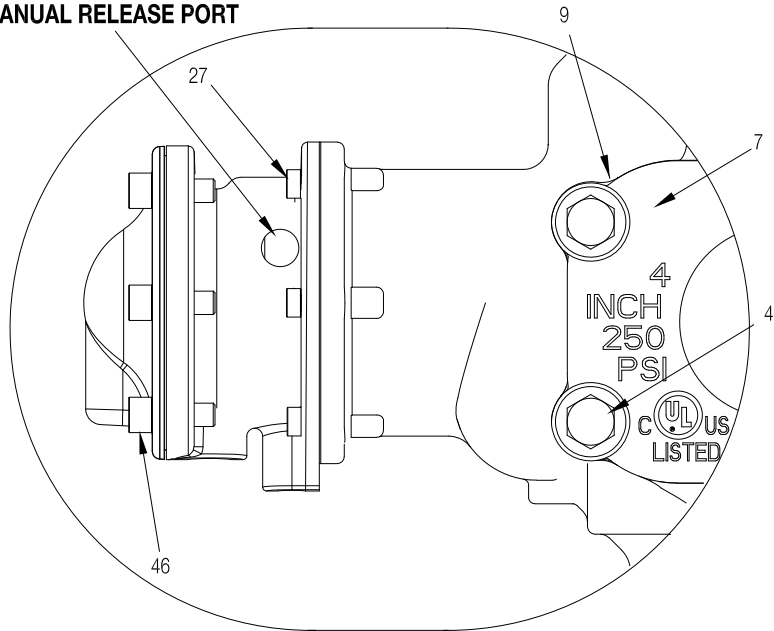


8	9101423B	MANIFOLD, 2 X 2 X 1, GRV/THD/THD		1
7	98840145	SWING CHECK VALVE, 1" NPT		1
6	98840136	VALVE, BALL, 2"		1
5	98543262	NIPPLE, 2X3-1/2,GALVANIZED STEEL		1
4	98543238	NIPPLE, 2XCLOSE,GALVANIZED STEEL		1
3	98543208	NIPPLE, 2X3,GALVANIZED STEEL		1
2	98174405	ELBOW, 2", MALL IRON, GALV.		2
1	91004299	MANIFOLD, DRAIN, BARBED, 6-3/16		1
ITEM NO.	PART NO.	DESCRIPTION	REMARKS	QTY.

BILL OF MATERIALS

MODEL EX DRY PIPE VALVE

MANUAL RELEASE PORT

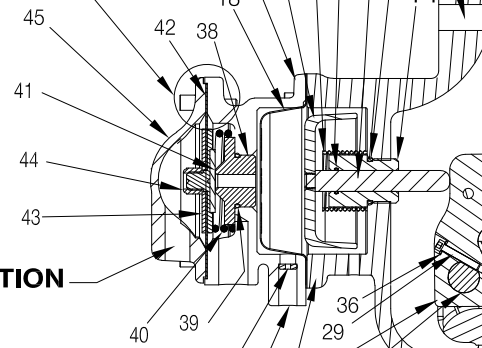


DETAIL B
FROM DRAWING
6101081010

SYSTEM
AIR PORT

TO SYSTEM
↑

DETAIL B



ACTUATION
AIR PORT

ORIFICE

FROM SIDE CHAMBER
SUPPLY PORT

BLEED HOLE

24 & 50 (UPPER SEAT O-RING)
25 & 50 (LOWER SEAT O-RING)

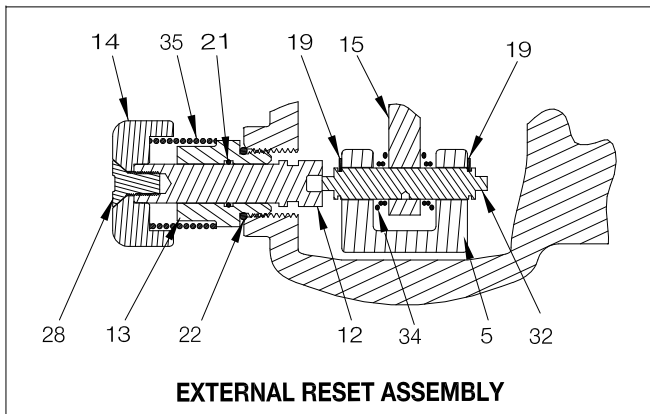
SIDE CHAMBER
SUPPLY

FROM SUPPLY
↑

DRAIN
PORT

ALARM
PORT

TEST
PORT



Model EX Dry Pipe Valve Parts List

Item No.	Part No.								Part Description	QTY.	Material
	2" (50mm)	2½" (65mm)	76mm	3" (80mm)	4" (100mm)	165mm	6" (150mm)	8" (200mm)			
1	91006011	91006012	91006023	91006013	91006005	91006027	91006007	91006028	Valve Body Groove/Groove	1	Ductile Iron 65-45-12
	N/A	N/A	N/A	N/A	91006045	N/A	91006067	N/A	Valve Body Flange/Groove		
	N/A	N/A	N/A	N/A	91006035	N/A	91006037	91006039	Valve Body Flange/Flange		
2	N/A	N/A	N/A	N/A	N/A	N/A	N/A	95406414	O-ring (Mounting Ring)	1	Buna-N
3	71040417								Middle Housing Assembly	1	Ductile Iron 65-45-12 & Brass C360000
4	91106123			N/A	N/A	N/A	N/A	N/A	Hex Bolt ½"-13 x 1¼"	6	Zinc Plated Steel
	N/A			95606107	N/A	N/A	N/A	N/A	Hex Bolt ½"-13 x 1½"	6	Zinc Plated Steel
	N/A			N/A	91106006	N/A	N/A	N/A	Hex Bolt ⅝"-11 x 1¾"	6	Zinc Plated Steel
	N/A			N/A	N/A	95606110	N/A	N/A	Hex Bolt ⅝"-11 x 2"	8	Zinc Plated Steel
5	91306013			91306014	91306016	91306016	91306018	91306018	Mounting Ring	1	Stainless Steel CF8 or CF8M
6	91916013			91916014	91916016	91916016	91916008	91916008	Clapper	1	Stainless Steel CF8 or CF8M
7	92116063			92116064	92116065	92116066	92116068	92116068	Access Cover	1	Ductile Iron 65-45-12
8	93416003			93416014	93416016	93416016	93416008	93416008	Seal Assembly	1	Stainless Steel 304 & EPDM
9	93706003			93706004	93706006	93706006	93706008	93706008	Access Cover Gasket	1	Buna-N or Neoprene
10	93722000			93722000	N/A	N/A	N/A	N/A	Bumpstop Assembly	1	Stainless Steel UNS S31600 & EPDM
	N/A			N/A	93722000	N/A	N/A	N/A		2	
	N/A			N/A	N/A	93722000	N/A	N/A		3	
11	93916006			93916006	N/A	N/A	N/A	N/A	Pushrod Guide	1	Acetal
12	93916066			93916066	N/A	N/A	N/A	N/A	Reset Shaft	1	Brass UNS C36000
13	94106066			94106066	N/A	N/A	N/A	N/A	Reset Housing	1	Brass UNS C36000
14	94356006			94356006	N/A	N/A	N/A	N/A	Reset Knob	1	Aluminum 6061
15	94506003			94506004	94506016	94506008	94506008	94506008	Lever	1	Stainless Steel UNS S17400
16	95006414			94006412	95006410	95006410	95006410	95006410	Striker	1	Aluminum Bronze C95400
17	95106006			95106006	N/A	N/A	N/A	N/A	Piston	1	Stainless Steel CF8M
18	95276006			95276006	N/A	N/A	N/A	N/A	Diaphragm	1	EPDM & Polyester
19	95306267			N/A	N/A	N/A	N/A	N/A	Retaining Ring, ⅜" Shaft, Lever Pin	2	Stainless Steel 15-7 or 17-7
	N/A			95306267	N/A	N/A	N/A	N/A	Retaining Ring, ½" Shaft, Lever Pin		
	N/A			N/A	95306269	N/A	N/A	N/A	Retaining Ring, ⅝" Shaft, Lever Pin		
	N/A			N/A	N/A	95316408	N/A	N/A	Retaining Ring, ¾" Shaft, Lever Pin		
20	95306267			N/A	N/A	N/A	N/A	N/A	Retaining Ring, ⅜" Shaft, Hinge Pin	2	Stainless Steel 15-7 or 17-7
	N/A			95306267	95306267	N/A	N/A	N/A	Retaining Ring, ½" Shaft, Hinge Pin		
	N/A			N/A	N/A	95316408	N/A	N/A	Retaining Ring, ¾" Shaft, Hinge Pin		
21	95406007			95406007	N/A	N/A	N/A	N/A	O-Ring, Reset Housing ID	1	Buna-N
22	95406024			95406024	N/A	N/A	N/A	N/A	O-Ring, Reset Housing & Pushrod Guide OD	2	Buna-N
23	95406407			95406407	N/A	N/A	N/A	N/A	O-Ring, Pushrod Guide ID	1	Buna-N
24	95406410			95406409	95436126	95406413	95406413	95406413	O-Ring, Upper Seat	1	Buna-N
25	95406411			95406420	95446226	95406412	95406412	95406412	O-Ring, Lower Seat	1	Buna-N
26	95506006			95506006	N/A	N/A	N/A	N/A	Pushrod	1	Stainless Steel UNS S30300
27	95606114			95606114	N/A	N/A	N/A	N/A	Socket Head Screw, ¼"-20 x ⅝"	6	Steel
28	95606127			95606127	N/A	N/A	N/A	N/A	Flat Head Socket Cap Screw ⅜"-16 x ¾"	1	Steel
29	95606133			N/A	N/A	N/A	N/A	N/A	Socket Head Screw #6-32 x ½"	1	Stainless Steel 18-8
	N/A			95606130	95606130	95606130	95606130	95606130	Socket Head Screw #10-32 x 1"	1	Stainless Steel UNS S31600
30	96016003			96016014	96016016	96016008	96016008	96016008	Seat	1	Stainless Steel CF8M
31	96206003			N/A	N/A	N/A	N/A	N/A	Hinge Pin	1	Stainless Steel UNS S30400
	N/A			96216086	96216086	96206008	96206008	96206008			
32	96216003			N/A	N/A	N/A	N/A	N/A	Lever Pin	1	Stainless Steel UNS S17400
	N/A			96216044	96216047	96216008	96216008	96216008			
33	96310003			96906904	96906904	96310008	96310008	96310008	Clapper Spacer	2	Teflon or Acetal
34	96406003			N/A	N/A	N/A	N/A	N/A	Lever Spring	1	Stainless Steel UNS S30400
	N/A			96406004	96406005	96406008	96406008	96406008		1	Stainless Steel UNS S31600
35	96906112			N/A	N/A	N/A	N/A	N/A	Spring Lock Washer, #6	2	Stainless Steel UNS S31600
	N/A			96906111	96906111	96906111	96906111	96906111		1	Stainless Steel 18-8
37	95606140			N/A	N/A	N/A	N/A	N/A	Spring Lock Washer, #10	1	Stainless Steel UNS S31600
	N/A			95606139	N/A	N/A	N/A	N/A	Flat Head Socket Cap Screw ¼"-20 x ½"	2	Stainless Steel 18-8
	N/A			N/A	N/A	N/A	95606135	95606135	Flat Head Socket Cap Screw ¼"-20 x ½"	1	Stainless Steel UNS S31600
38	96006908			96006908	N/A	N/A	N/A	N/A	Flat Head Socket Cap Screw ½"-13 x ¾"	1	Stainless Steel UNS S31600
	95406901			95406901	N/A	N/A	N/A	N/A	Actuation Seat	1	Brass UNS C36000
39	96406901			96406901	N/A	N/A	N/A	N/A	O-Ring, Actuation Seat	1	Buna-N
40	95106911			95106911	N/A	N/A	N/A	N/A	Actuation Spring	1	Stainless Steel UNS S31600
41	92206312			92206312	N/A	N/A	N/A	N/A	Actuation Facing Plate	1	Brass UNS C36000 & EPDM
42	96906311			96906311	N/A	N/A	N/A	N/A	Actuation Diaphragm	1	EPDM
43	94906406			94906406	N/A	N/A	N/A	N/A	Actuation Washer	1	Stainless Steel UNS S31600
44	94106953			94106953	N/A	N/A	N/A	N/A	Actuation Locking Nut	1	Stainless Steel UNS S31600 & Nylon
45	95606154			95606154	N/A	N/A	N/A	N/A	Side Cover	1	Ductile Iron 65-45-12
46*	94616921			94616921	N/A	N/A	N/A	N/A	Screw, socket cap, 5/16"-18x1"	6	Steel
47	91556922			91556922	N/A	N/A	N/A	N/A	Knob Caution Label (Not Shown)	1	Polystyrene
48	91556923			91556923	N/A	N/A	N/A	N/A	Ball Chain, 1/8" (Not Shown) (Qty. is Length in Inches)	6	Nickel Plated Brass
49	699993406			699993406	N/A	N/A	N/A	N/A	Clamping Link, Ball Chain (Not Shown)	1	Nickel Plated Brass
50	93916410			93916410	N/A	N/A	N/A	N/A	O-Ring Grease, Dupontm Krytox® GPL-205 (Not Shown)	A/R	Krytox®
51	93916410			93916410	N/A	N/A	N/A	N/A	Guide, Side Cover	6	Alloy Steel

*Note: Items 41, 42, 43, and 44 sold only as an assembly; P/N 6501200052