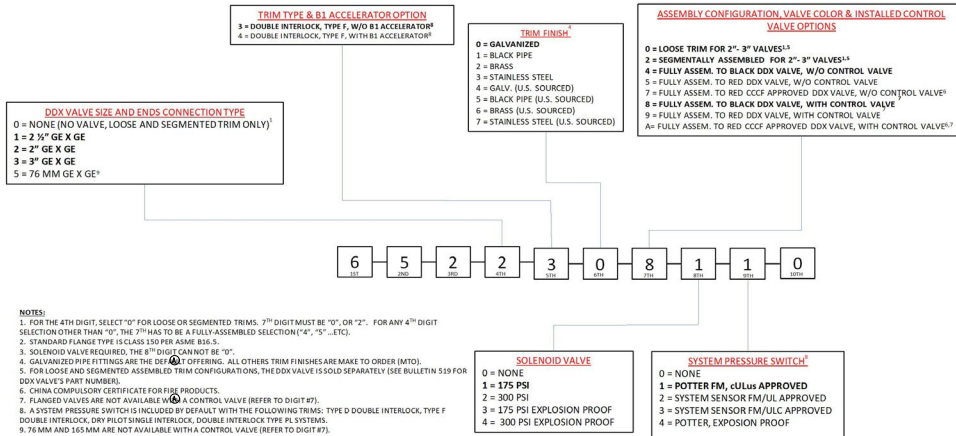


# DDX VALVE TRIMS PART NUMBER CONFIGURATION

SELECTIONS IN **BOLD>** ARE STANDARD OPTIONS

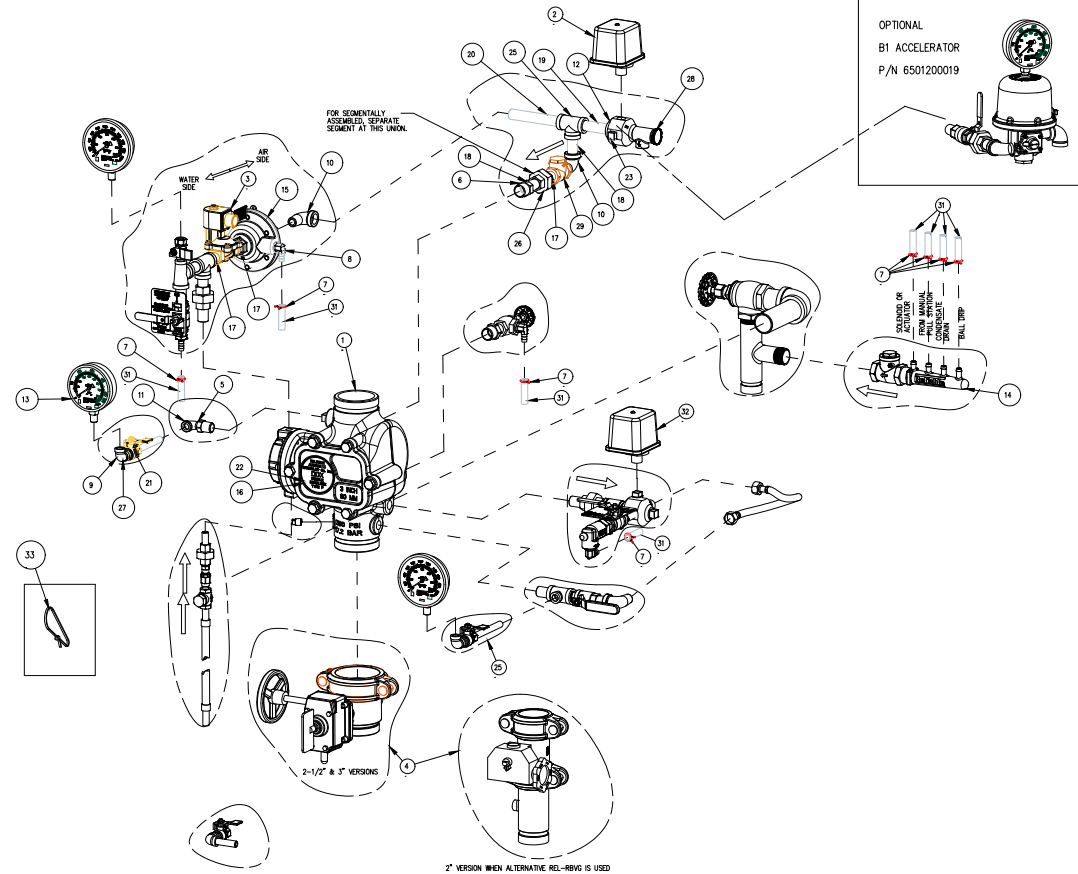


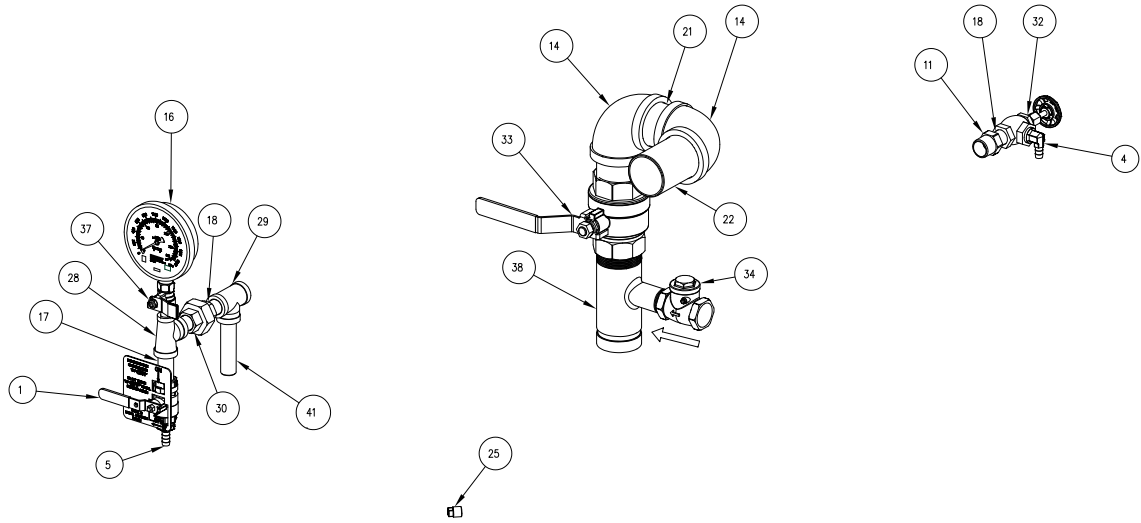
**DDX VALVE PART NUMBER TABLE**

DDX VALVE	VALVE PART NUMBER	DRAWING FILE NUMBER
2" DUCTILE IRON G/G BLACK	6103022000	6103030000
2" DUCTILE IRON G/G RED	6103022001	
2-1/2" DUCTILE IRON G/G BLACK	6103022500	
2-1/2" DUCTILE IRON G/G RED	6103022501	
3" DUCTILE IRON G/G BLACK	6103030000	
3" DUCTILE IRON G/G RED	6103030001	
76MM DUCTILE IRON G/G RED	6103027600	

MODEL DDX 2"-3" DELUGE DOUBLE INTERLOCK TYPE F  
 CA-191 P/N 89241153  
 ASSEMBLY P/N 6520300110 REV. H

33	8914112	TE, RETAINING		9
	699001297	SWITCH, POTTER PRESSURE (PS10-EX)	(ULC, UL, FM)	
	699000392	SWITCH, POTTER PRESSURE (PS10-2)	(ULC, UL, FM)	1
32	699999360	SWITCH, PRESSURE (PS340-2)	(ULC)	
	699999124	SWITCH, PRESSURE (PS340-2)	(UL, FM)	
31	96266756	TUBING, FIC, 3/8" I.D. x 6 FT.		1
30	95016915	PERMA-LOK	NOT SHOWN	A/R
29	96840181	HORIZ. SWING CHECK VALVE, 1/2" NPT		1
28	96840228	VALVE, RELIEF, 1/2", 50 PSI		1
27	96840237	VALVE, BALL, 1/2" NPT x 1/4" NPTM		1
26	96815204	UNION, O-RING SEAL, GALV., 1/2"		1
25	98764651	TEE, 1/2x1/2x1/2 GALVANIZED		1
24	77000263	SUB-ASSEMBLY, TRIM, BASE, GALVANIZED PIPE		1
23	96804406	PIPE, PLUG, IRON, SQUARE HEAD, 1/2"		1
22	96808022	PAID-ADHESIVE, VALVE NAME PLATES		1
21	96543243	NPPLE, 1/4x1/4 GALVANIZED STEEL		1
20	96543219	NPPLE, 1/2x1/2 GALVANIZED STEEL		1
19	96543230	NPPLE, 3/4x3/4 GALVANIZED STEEL		1
18	96543269	NPPLE, 1/2x1/2 GALVANIZED STEEL		2
17	96543223	NPPLE, 1/2x1/2 GALVANIZED STEEL		3
16	94616919	NAMEPLATE, DOUBLE INTERLOCK, TYPE F		1
15	71030010	MODEL LP PILOT LINE ACTUATOR		1
14	91024299	MANIFOLD, DRAIN, BARBED, 6-3/16		1
13	96246000	GAUGE, AIR PRESSURE (0-60 PSI)		1
12	96751004	FITTING, MULTIPORT, 1/2x1/2x1/2x1/2		1
11	98174408	ELBOW, STREET, 1/4", GALV.		1
10	98174400	ELBOW, STREET, 1/2", GALV.		2
9	98174404	ELBOW, 1/2", WALL, IRON, GALV.		1
8	92766104	CONNECTOR, ELBOW, 3/8" O.D. TUBE x 1/2" NPT		1
7	95306255	CLAMP, HOSE, 1/2" CONSTANT TENSION, ZINC		8
6	96048922	BUSHING, REDUCER, 3/4x1/2, GALVANIZED		1
5	96048900	BUSHING, REDUCER, 1/2x1/4, GALVANIZED		1
	77000303	SUBASSEMBLY, CONTROL VALVE, 3"	FULLY ASSEMBLED WITH CONTROL VALVE ONLY	1
4	77000302	SUBASSEMBLY, CONTROL VALVE, 2-1/2"		1
	77000301	SUBASSEMBLY, CONTROL VALVE, 2"		1
	6871020033	VALVE, SOLENOID (300 PSI) EXPLOSION PROOF	300 PSI EX. PROOF	1
	6899990322	VALVE, SOLENOID (175 PSI) EXPLOSION PROOF	175 PSI EX. PROOF	1
3	6871020020	VALVE, SOLENOID (300 PSI)	300 PSI RATED	1
	6871020000	VALVE, SOLENOID (175 PSI)	175 PSI RATED	1
	699003756	SWITCH, POTTER PRESSURE (PS40-EX)	(ULC, UL, FM)	
	699010313	SWITCH, POTTER PRESSURE (PS25-2)	(ULC, UL, FM)	1
2	699999291	SWITCH, PRESSURE (PS340-2)	(ULC)	
	699999130	SWITCH, PRESSURE (PS340-2)	(UL, FM)	
1	SEE DDX VALVE P/N TABLE			1
ITEM NO.	PART NO.	DESCRIPTION		QTY.

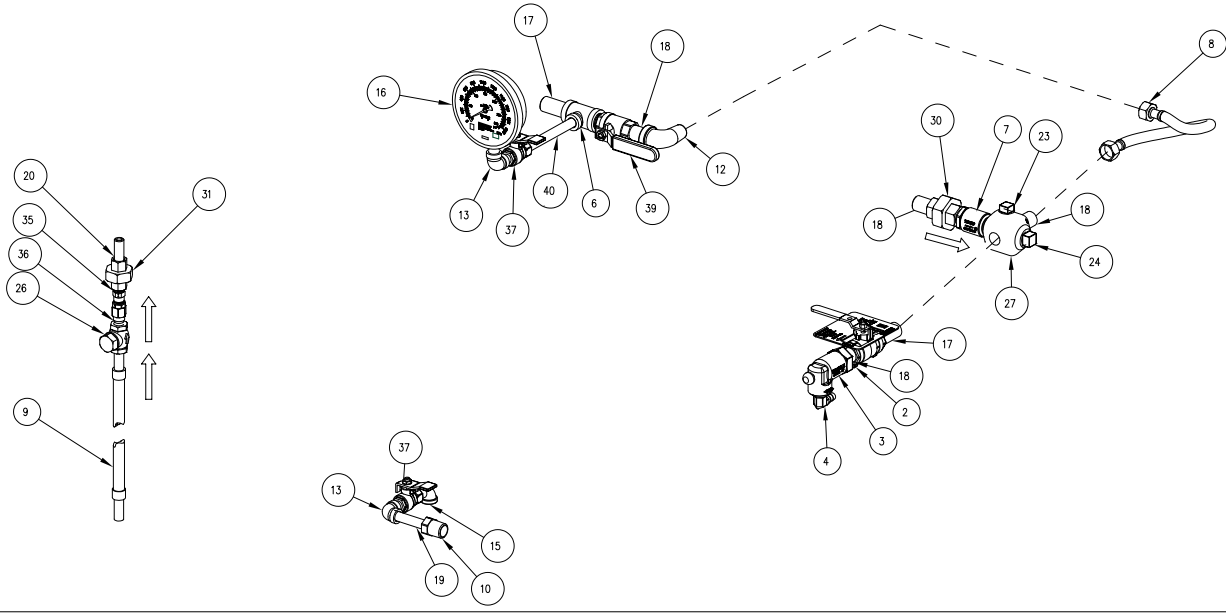




MODEL DDX 4", 6", 8" BASIC TRIMS

CA-323

SUBASSEMBLY P/N 77000266 REV. K



42	95516915	PERMA-LOK		NOT SHOWN	A/R
41	98543216	NIPPLE, STEEL, GALV., 1/2" X 3-1/2"		4" & 6" VERSIONS	1
	98543205	NIPPLE, STEEL, GALV., 1/2" X 9"		8" VERSION	
40	98543224	NIPPLE, STEEL, GALV., 1/4" X 4-1/2"		4" & 6" VERSIONS	1
	98543217	NIPPLE, STEEL, GALV., 1/4" X 6"		8" VERSION	
39	9884011A	VALVE, BALL, 1/2 NPTF x 1/2 NPTM			1
38	9101423B	MANIFOLD, 2 X 2 X 1, GRV/THD/THD			1
37	98840237	VALVE, BALL, 1/4" NPTF x 1/4" NPTM			3
36	98840188	VALVE, CHECK, 1/4" NPTM x 1/4" NPTF			1
35	98840147	CHECK VALVE, 1/4, NPT, POPPET TYPE INLINE			1
34	98840145	SWING CHECK VALVE, 1" NPT			1
33	98840136	VALVE, BALL, 2"			1
32	98840103	VALVE, ANGLE, 1/2"			1
31	98815201	UNION, 1/4, IRON, G.J., GALV.			1
30	98815200	UNION, 1/2, IRON, G.J., GALV.			2
29	98761651	TEE, 1/2X1/2X1/2, GALVANIZED			1
28	98761649	TEE, 1/2X1/4X1/2, GALVANIZED			1
27	98751005	FITTING, MULTIPORT, 3/4X1/2X1/2X1/2			1
26	98727607	STRAINER, 1/4"			1
25	98614403	PIPE, PLUG, IRON, SQUARE HEAD, 1/4			1
24	98614401	PIPE, PLUG, IRON, SQUARE HEAD, 3/4			1
23	98604406	PIPE, PLUG, IRON, SQUARE HEAD, 1/2			1
22	98543262	NIPPLE, 2X3-1/2, GALVANIZED STEEL			1
21	98543238	NIPPLE, 2XCLOSE, GALVANIZED STEEL			2
20	98543226	NIPPLE, 1/4X1-1/2, GALVANIZED STEEL			1
19	98543225	NIPPLE, 1/4X2-1/2, GALVANIZED STEEL			1
18	98543223	NIPPLE, 1/2X1-1/2, GALVANIZED STEEL			7
17	98543209	NIPPLE, 1/2X2, GALVANIZED STEEL			3
16	98248001	GAUGE, WATER PRESSURE (0-300 PSI)			2
15	98174408	ELBOW, STREET, 1/4", GALV.			1
14	98174405	ELBOW, 2", MALL IRON, GALV.			2
13	98174404	ELBOW, 1/4", MALL IRON, GALV.			2
12	98174400	ELBOW, STREET, 1/2", GALV.			1
11	98048022	BUSHING, REDUCER, 3/4X1/2, GALVANIZED			1
10	98048000	BUSHING, REDUCER, 1/2X1/4, GALVANIZED			1
9	96920944	HOSE, FLEXIBLE, STAINLESS STEEL, 1/4 NPT X 18 LONG			1
8	96920912	FLEX LINE, 12			1
7	96816906	VALVE, CHECK, MALE 1/2, MALE 1/2			1
6	96606607	TEE, 1/2X1/2X1/4, GALVANIZED			1
5	92056810	CONNECTOR, 3/8" ID TUBE x 1/2" NPT			1
4	92056704	CONNECTOR, ELBOW, 3/8" ID TUBE x 1/2" NPT			2
3	78653800	ASSEMBLY, BALL DRIP, 1/2"			1
2	78653004	ASSEMBLY, VALVE CAUTION STATION, 1/2"			1
1	78653000	ASSEMBLY, MANUAL EMERGENCY STATION			1
ITEM NO.	PART NO.	DESCRIPTION	REMARKS	QTY.	
BILL OF MATERIALS					

DDX VALVE PART NUMBER TABLE

DDX VALVE	VALVE PART NUMBER	DRAWING FILE NUMBER	
4" DUCTILE IRON G/G BLACK	6103040026	6103040026	
4" DUCTILE IRON G/G RED	6103040030		
4" DUCTILE IRON F/G CLASS 150 BLACK	6103040044		
4" DUCTILE IRON F/G CLASS 150 RED	6103040046		
4" DUCTILE IRON F/G PN16 RED	6103040048		
4" DUCTILE IRON F/F CLASS 150 BLACK	6103040045		
4" DUCTILE IRON F/F CLASS 150 RED	6103040047		
4" DUCTILE IRON F/F PN16 RED	6103040049		
6" DUCTILE IRON G/G BLACK	6103060024		6103060024
6" DUCTILE IRON G/G RED	6103060030		
6" DUCTILE IRON F/G CLASS 150 BLACK	6103060045		
6" DUCTILE IRON F/G CLASS 150 RED	6103060048		
6" DUCTILE IRON F/G PN16 RED	6103060049		
6" DUCTILE IRON F/F CLASS 150 BLACK	6103060046		
6" DUCTILE IRON F/F CLASS 150 RED	6103060047		
6" DUCTILE IRON F/F PN16 RED	6103060050		
165MM DUCTILE IRON G/G RED	6103060028	6103060024	
165MM DUCTILE IRON F/G CLASS 150 RED	6103060051		
165MM DUCTILE IRON F/G PN16 RED	6103060052		
8" DUCTILE IRON G/G BLACK	6103080001	6103080001	
8" DUCTILE IRON G/G RED	6103080003		
8" DUCTILE IRON F/F CLASS 150 BLACK	6103080016		
8" DUCTILE IRON F/F CLASS 150 RED	6103080018		
8" DUCTILE IRON F/F PN16 RED	6103080020		

MODEL DDX 4", 6" & 8" DELUGE DOUBLE INTERLOCK TYPE F

CA-149 P/N 89241114

ASSEMBLY P/N 6520301110 REV. J

35	98543209	NIPPLE, STEEL, GALV., 1/2" x 2"	4	
34	98543209	NIPPLE, STEEL, GALV., 1/2" x 2"	4" & 6" VERSIONS	
	98543230	NIPPLE, STEEL, GALV., 1/2" x 3"	8" VERSION	
33	96886756	TUBING, PVC, 3/8" I.D. x 6 FT.	1	
32	95518915	PERMA-LOK	NOT SHOWN	
31	8041112	TC, RETAINING	A/R	
	699006382	SWITCH, POTTER PRESSURE (PS10-2)	(A/C, UL, FM)	
	699001287	SWITCH, POTTER PRESSURE (PS10-EX)	(A/C, UL, FM)	
30	699992360	SWITCH, PRESSURE (EPS40-2)	(A/C)	
	699992311	SWITCH, PRESSURE (EPS40-2)	(UL, FM)	
29	98540181	HORIZ. SWING CHECK VALVE, 1/2" NPT	1	
28	98840228	VALVE, RELIEF, 1/2", 50 PSI	1	
27	98840237	VALVE, BALL, 1/4" NPT x 1/4" NPT	1	
26	98815204	UNION, ORING SEAL, GALV., 1/2"	1	
25	98913200	UNION, 1/2", IRON, S.S., GALV.	1	
24	98781651	TEE, 1/2"/2x1/2"/2x1/2", GALVANIZED	1	
23	77000266	SUB-ASSEMBLY, TRIM, BASE, GALVANIZED PIPE	1	
22	98604406	PIPE, FLUG, IRON, SQUARE HEAD, 1/2"	1	
21	99680002	PAD-NOMENCL. VALVE NAME PLATES	1	
20	98543217	NIPPLE, 1/2"/1/2", GALVANIZED STEEL	1	
19	98543223	NIPPLE, 1/2"/1/2", GALVANIZED STEEL	1	
18	94618919	NAMEPLATE, DOUBLE INTERLOCK, TYPE F	1	
17	71030010	MODEL LP PILOT LINE ACTUATOR	1	
16	91054299	MANIFOLD, DRAIN, BARREL, 6-3/16"	1	
15	96248000	GAUGE, AIR PRESSURE (0-60 PSI)	1	
14	98751004	FITTING, MULTIPORT, 1/2x1/2x1/2x1/2	1	
13	98174408	ELBOW, STREET, 1/4", GALV.	1	
12	98174400	ELBOW, STREET, 1/2", GALV.	2	
11	98174404	ELBOW, 1/4", BALL IRON, GALV.	1	
10	92056704	CONNECTOR, ELBOW, 3/8" O.D. TUBE x 1/2" NPT	1	
9	95306255	CLAMP, HOSE, 1/2" CONSTANT TENSION, ZINC	8	
8	98048022	BUSHING, REDUCER, 3/4x1/2, GALVANIZED	1	
7	98048000	BUSHING, REDUCER, 1/2x1/4, GALVANIZED	1	
	98543230	NIPPLE, STEEL, GALV., 1/2" x 3"	4" VERSION	
	98543228	NIPPLE, STEEL, GALV., 1/2" x 4-1/2"	6" VERSION	
	98543204	NIPPLE, STEEL, GALV., 1/2" x 6"	8" VERSION	
	77000308	SUBASSEMBLY, CONTROL VALVE, 6"	FULLY ASSEMBLED WITH CONTROL VALVE ONLY	
	77000306	SUBASSEMBLY, CONTROL VALVE, 6"	FULLY ASSEMBLED WITH CONTROL VALVE ONLY	
	77000304	SUBASSEMBLY, CONTROL VALVE, 4"	FULLY ASSEMBLED WITH CONTROL VALVE ONLY	
5	98543212	NIPPLE, STEEL, GALV., 1/2" x CLOSE*	1	
	6871020033	VALVE, SOLENOID (300 PSI) EXPLOSION PROOF	300 PSI EX. PROOF	
	699990322	VALVE, SOLENOID (175 PSI) EXPLOSION PROOF	175 PSI EX. PROOF	
	6871020020	VALVE, SOLENOID (300 PSI)	300 PSI RATED	
	6871020010	VALVE, SOLENOID (175 PSI)	175 PSI RATED	
	699003756	SWITCH, POTTER PRESSURE (PS40-EX)	(A/C, UL, FM)	
	6990019313	SWITCH, POTTER PRESSURE (PS25-2)	(A/C, UL, FM)	
	699992361	SWITCH, PRESSURE (EPS40-2)	(A/C)	
	699991340	SWITCH, PRESSURE (EPS40-2)	(UL, FM)	
1	SEE DDX VALVE P/N TABLE		1	
ITEM NO.	PART NO.	DESCRIPTION	REMARKS	QTY.
BILL OF MATERIALS				

DDX VALVE TRIMS PART NUMBER CONFIGURATION

SELECTIONS IN BOLD ARE STANDARD OPTIONS

**DDX VALVE SIZE AND ENDS CONNECTION TYPE**  
 0 = NONE (NO VALVE, LOOSE AND SEGMENTED TRIM ONLY)  
 4 = 4" G X GE  
 6 = 6" GE X GE  
 7 = 165 MM GEX GE\*  
 8 = 8" GE X GE  
 A = 4" FLANGE<sup>1</sup> INLET X GE OUTLET  
 B = 4" FLANGE<sup>1</sup> INLET X FLANGE<sup>2</sup> OUTLET  
 C = 4" PN16 FLANGE<sup>1</sup> INLET X GE OUTLET  
 D = 4" PN16 FLANGE<sup>1</sup> INLET X PN16 FLANGE<sup>2</sup> OUTLET  
 E = 6" FLANGE<sup>1</sup> INLET X GE OUTLET  
 F = 6" FLANGE<sup>1</sup> INLET X FLANGE<sup>2</sup> OUTLET  
 G = 6" PN16 FLANGE<sup>1</sup> INLET X GE OUTLET  
 H = 6" PN16 FLANGE<sup>1</sup> INLET X PN16 FLANGE<sup>2</sup> OUTLET  
 I = 165 MM FLANGE<sup>1</sup> INLET X GE OUTLET  
 J = 165 MM PN16 FLANGE<sup>1</sup> INLET X GE OUTLET  
 K = 8" FLANGE<sup>1</sup> INLET X FLANGE<sup>2</sup> OUTLET  
 L = 8" PN16 FLANGE<sup>1</sup> INLET X PN16 FLANGE<sup>2</sup> OUTLET

**TRIM TYPE & BI ACCELERATOR OPTION**  
 3 = DOUBLE INTERLOCK, TYPE F, W/O BI ACCELERATOR\*  
 4 = DOUBLE INTERLOCK, TYPE F, WITH BI ACCELERATOR\*

**TRIM FINISH<sup>1</sup>**  
 0 = GALVANIZED  
 1 = BLACK PIPE  
 2 = BRASS  
 3 = STAINLESS STEEL  
 4 = GALV. (U.S. SOURCED)  
 5 = BLACK PIPE (U.S. SOURCED)  
 6 = BRASS (U.S. SOURCED)  
 7 = STAINLESS STEEL (U.S. SOURCED)

**ASSEMBLY CONFIGURATION, VALVE COLOR & INSTALLED CONTROL VALVE OPTIONS**

1 = LOOSE TRIM FOR 4" - 8" VALVES\*\*  
 3 = SEGMENTALLY ASSEMBLED FOR 4" - 8" VALVES\*\*  
 4 = FULLY ASSEM. TO BLACK DDX VALVE, W/O CONTROL VALVE  
 5 = FULLY ASSEM. TO RED DDX VALVE, W/O CONTROL VALVE  
 7 = FULLY ASSEM. TO RED CCCF APPROVED DDX VALVE, W/O CONTROL VALVE\*  
 8 = FULLY ASSEM. TO BLACK DDX VALVE, WITH CONTROL VALVE  
 9 = FULLY ASSEM. TO RED DDX VALVE, WITH CONTROL VALVE  
 A = FULLY ASSEM. TO RED CCCF APPROVED DDX VALVE, WITH CONTROL VALVE\*\*

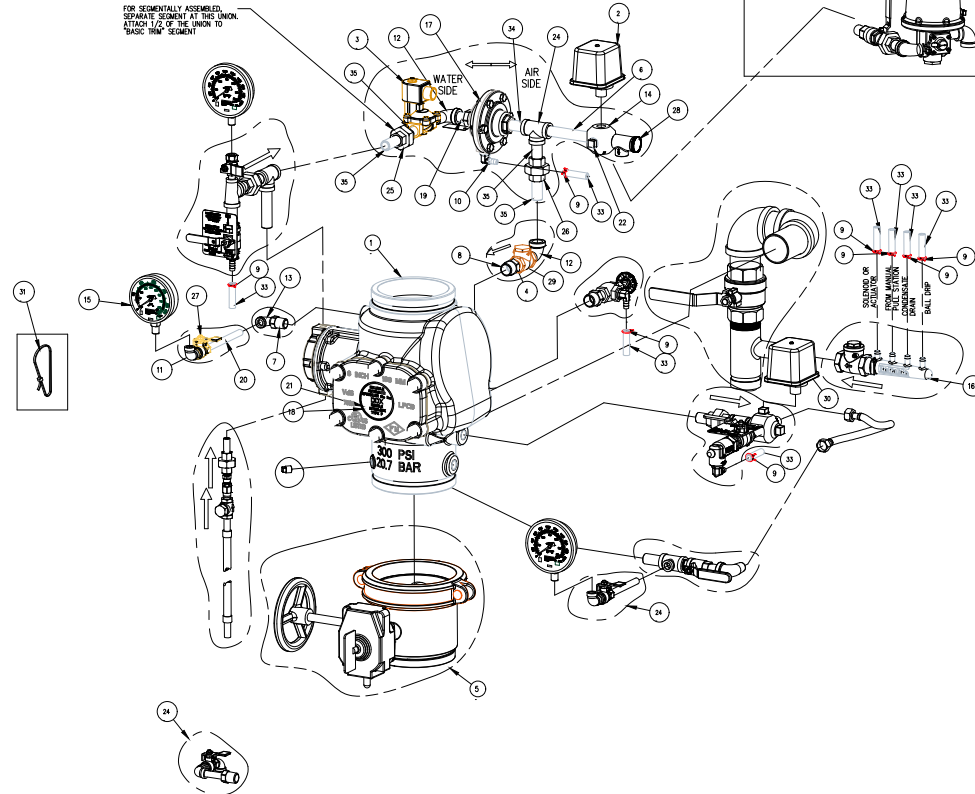


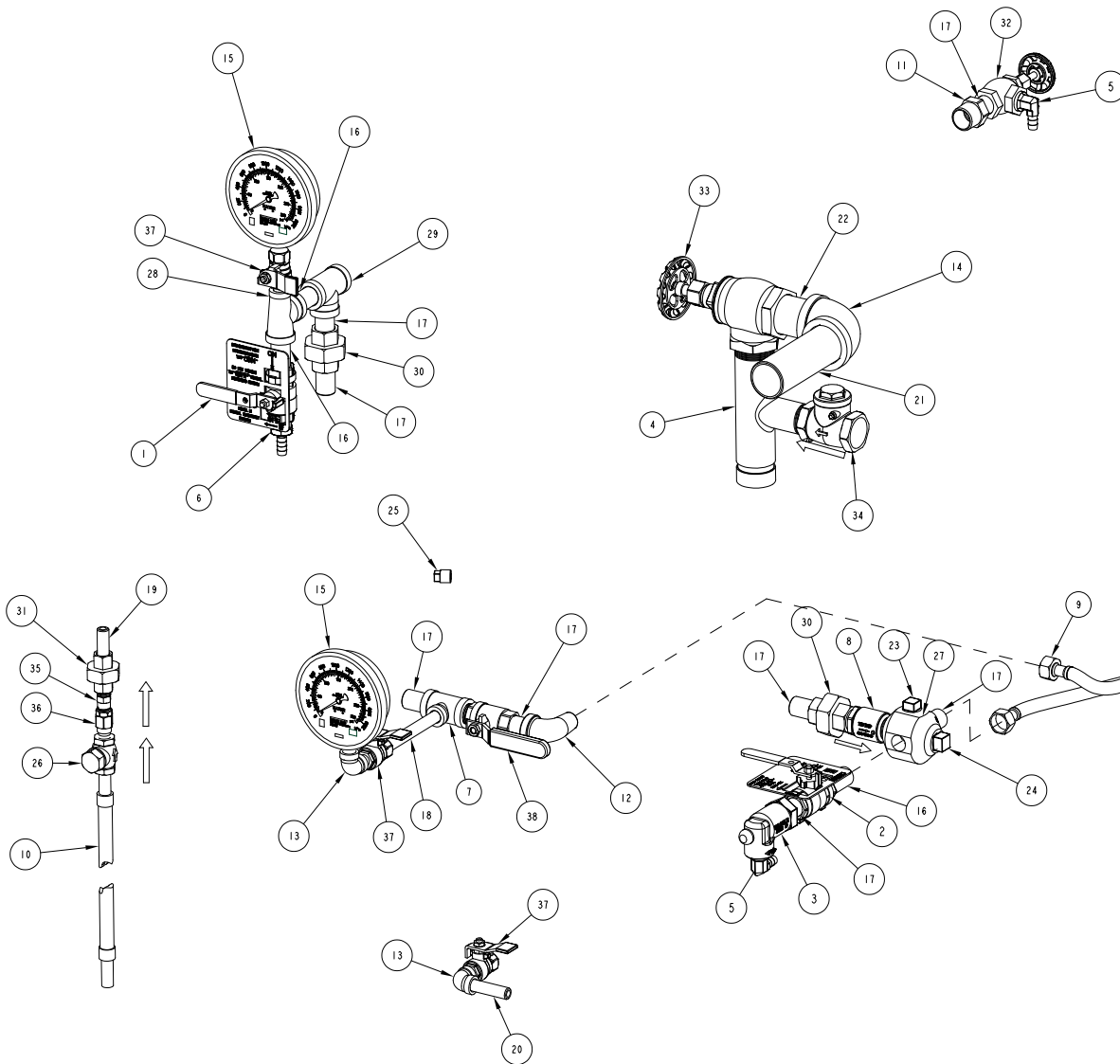
**NOTES:**

- FOR THE 4TH DIGIT, SELECT "0" FOR LOOSE OR SEGMENTED TRIMS. 7TH DIGIT MUST BE "1", "3", OR "9". FOR ANY 4TH DIGIT SELECTION OTHER THAN "0", THE 7TH MUST BE A FULLY ASSEMBLED SELECTION ("4", "5", ... ETC).
- STANDARD FLANGE TYPE IS CLASS 150 FOR RISE B&S.
- SOLENOID VALVE REQUIRED, THE 8TH DIGIT CAN NOT BE "0".
- GALVANIZED PIPE FITTINGS ARE THE DEFAULT OFFERING. ALL OTHERS TRIM FINISHES ARE MADE TO ORDER (MTO).
- FOR LOOSE AND SEGMENTED ASSEMBLED TRIM CONFIGURATIONS, THE DDX VALVE IS SOLD SEPARATELY (SEE BULLETIN 519 FOR DDX VALVE'S PART NUMBER).
- CHINA COMPULSORY CERTIFICATE FOR FIRE PRODUCTS.
- FLANGED VALVES ARE NOT AVAILABLE WITH A CONTROL VALVE (REFER TO DIGIT 9).
- A SYSTEM PRESSURE SWITCH IS INCLUDED BY DEFAULT WITH THE FOLLOWING TRIMS: TYPE D DOUBLE INTERLOCK, TYPE F DOUBLE INTERLOCK, DRY PIPOT SINGLE INTERLOCK, DOUBLE INTERLOCK TYPE PL SYSTEMS. 6, 8, 10 MM AND 160 MM ARE NOT AVAILABLE WITH A CONTROL VALVE (REFER TO DIGIT 9).

**SOLENOID VALVE<sup>1</sup>**  
 0 = NONE  
 1 = 175 PSI  
 2 = 300 PSI  
 3 = 175 PSI EXPLOSION PROOF  
 4 = 300 PSI EXPLOSION PROOF

**SYSTEM PRESSURE SWITCH<sup>1</sup>**  
 0 = NONE  
 1 = POTTER FM, cULus APPROVED  
 2 = SYSTEM SENSOR FM/UL APPROVED  
 3 = SYSTEM SENSOR FM/ULC APPROVED  
 4 = POTTER, EXPLOSION PROOF





MODEL DDX 2"-3" BASIC TRIMS

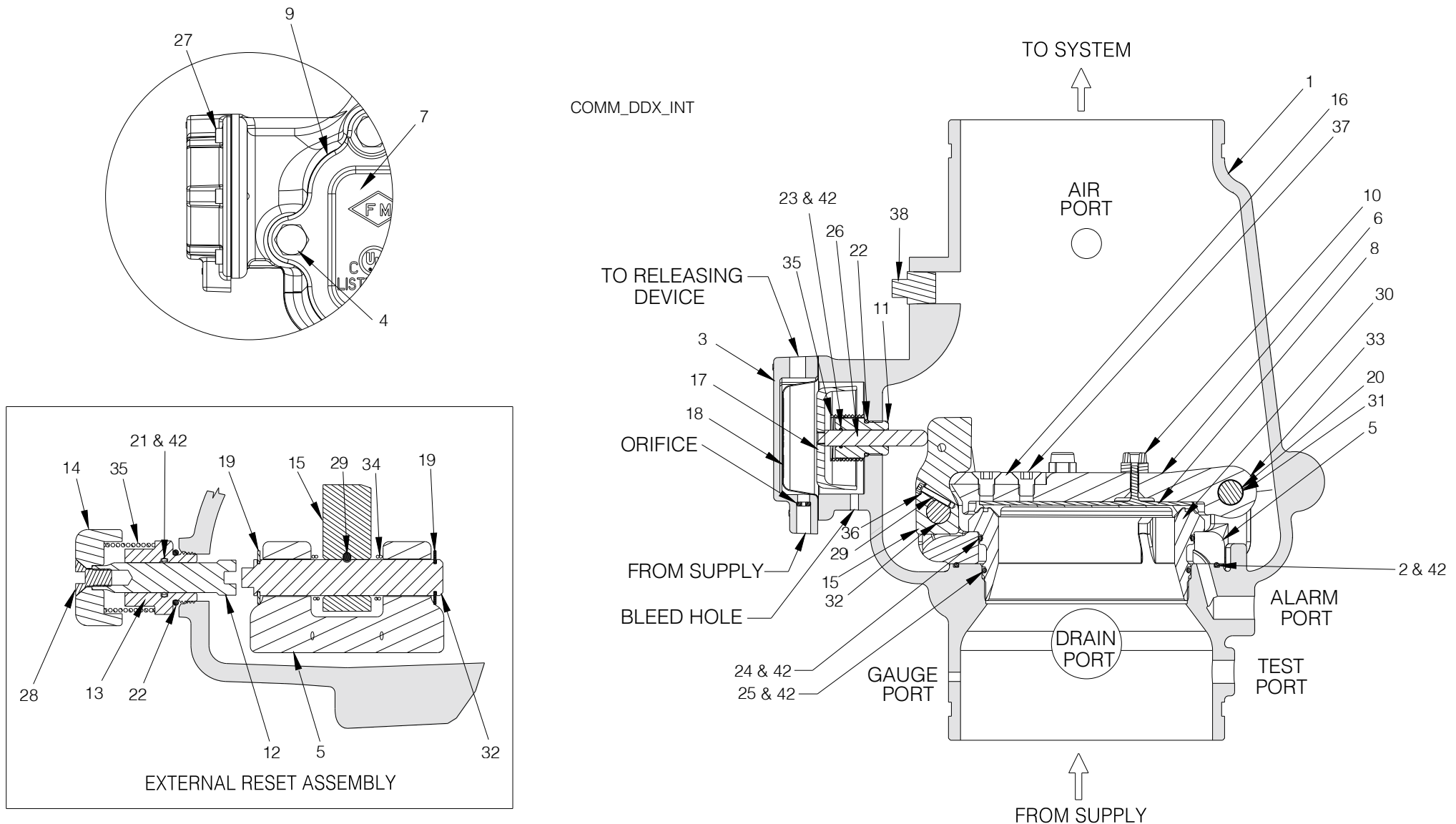
CA-322

SUBASSEMBLY P/N 77000263 REV. F

ITEM NO.	PART NO.	DESCRIPTION	REMARKS	QTY.
39	95516915	THREAD, SEALANT	NOT SHOWN	A/R
38	9884011A	VALVE, BALL, 1/2" NPTF X 1/2" NPTM		1
37	98840237	VALVE, BALL, 1/4" NPTF X 1/4" NPTM		3
36	98840188	VALVE, CHECK, 1/4" NPTM X 1/4" NPTF		1
35	98840147	CHECK VALVE, 1/4", NPT, POPPET TYPE INLINE		1
34	98840145	SWING CHECK VALVE, 1" NPT		1
33	98840106	VALVE, ANGLE, 1 1/4"		1
32	98840103	VALVE, ANGLE, 1/2"		1
31	98815201	UNION, 1/4", IRON, G.J., GALV.		1
30	98815200	UNION, 1/2", IRON, G.J., GALV.		2
29	98761651	TEE, 1/2X1/2X1/2, GALVANIZED		1
28	98761649	TEE, 1/2X1/4X1/2, GALVANIZED		1
27	98751005	FITTING, MULTIPORT, 3/4x1/2x1/2x1/2x1/2		1
26	98727607	STRAINER, 1/4"		1
25	98614403	PIPE, PLUG, IRON, SQUARE HEAD, 1/4"		1
24	98614401	PIPE, PLUG, IRON, SQUARE HEAD, 3/4"		1
23	98604406	PIPE, PLUG, IRON, SQUARE HEAD, 1/2"		1
22	98543285	NIPPLE, 1-1/4X1/2, GALVANIZED STEEL		1
21	98543284	NIPPLE, 1-1/4X1/2, GALVANIZED STEEL		1
20	98543244	NIPPLE, 1/4X2, GALVANIZED STEEL		1
19	98543226	NIPPLE, 1/4X1-1/2, GALVANIZED STEEL		1
18	98543224	NIPPLE, 1/4X4-1/2, GALVANIZED STEEL		1
17	98543223	NIPPLE, 1/2X1-1/2, GALVANIZED STEEL		8
16	98543209	NIPPLE, 1/2X2, GALVANIZED STEEL		3
15	98248001	GAUGE, WATER PRESSURE (0-300 PSI)		2
14	98174414	ELBOW, 1-1/4", MALL IRON, GALV.		1
13	98174404	ELBOW, 1/4", MALL IRON, GALV.		2
12	98174400	ELBOW, STREET, 1/2", GALV.		1
11	98048022	BUSHING, REDUCER, 3/4X1/2, GALVANIZED		1
10	96920944	HOSE, FLEXIBLE, STAINLESS STEEL, 1/4 NPT X 18 LONG		1
9	96920912	FLEX LINE, 12'		1
8	96816906	VALVE, CHECK, MALE 1/2, MALE 1/2		1
7	96606607	TEE, 1/2X1/2X1/4, GALVANIZED		1
6	92056810	CONNECTOR, 3/8" ID TUBE X 1/2" NPT		1
5	92056704	CONNECTOR, ELBOW, 3/8" ID TUBE X 1/2" NPT		2
4	9101423C	MANIFOLD, 1-1/4 X 1-1/4 X 1, GRV/THD/THD		1
3	78653800	ASSEMBLY, BALL DRIP, 1/2"		1
2	78653004	ASSEMBLY, VALVE CAUTION STATION, 1/2"		1
1	78653000	ASSEMBLY, MANUAL EMERGENCY STATION		1
<b>BILL OF MATERIALS</b>				

## MODEL DDX VALVE WITH STAINLESS STEEL SCREW-IN SEAT

IMPORTANT NOTE: Early generation 4" and 6" DDX valves may incorporate a brass drop-in seat. Prior to ordering replacement parts, confirm the presence of a stainless steel screw-in seat or brass drop-in seat. For replacement parts for valves with brass drop-in seat, please contact Reliable Sprinkler Company Technical Services ([techserv@reliablesprinkler.com](mailto:techserv@reliablesprinkler.com))



## Model DDX (Screw-In Seat Configuration) Deluge Valves Parts List

Item No.	Part No.								Part Description	QTY.	Material
	2" (50mm)	2½" (65mm)	76mm	3" (80mm)	4" (100mm)	165mm	6" (150mm)	8" (200mm)			
1	91006011	91006012	91006023	91006013	91006005	91006027	91006007	91006028	Valve Body Groove/Groove	1	Ductile Iron 65-45-12
	N/A	N/A	N/A	N/A	91006045	N/A	91006067	N/A	Valve Body Flange/Groove		
	N/A	N/A	N/A	N/A	91006035	N/A	91006037	91006039	Valve Body Flange/Flange		
2	N/A	N/A	N/A	N/A	N/A	N/A	N/A	95406414	O-ring (Mounting Ring)	1	Buna-N
3	71040416								Pushrod Cover Assembly	1	Ductile Iron 65-45-12 & Brass C360000
4	91106123			N/A	N/A	N/A	Hex Bolt ½"-13 x 1¼"		6	Zinc Plated Steel	
	N/A			95606107	N/A	N/A	Hex Bolt ½"-13 x 1½"		6		
	N/A			N/A	91106006	N/A	Hex Bolt ⅝"-11 x 1¾"		6		
	N/A			N/A	N/A	95606110	Hex Bolt ⅝"-11 x 2"		8		
5	91306013			91306014	91306016	91306018	Mounting Ring		1	Stainless Steel CF8 or CF8M	
6	91916003			91916014	91916016	91916008	Clapper		1	Stainless Steel CF8 or CF8M	
7	92116063			92116064	92116065	92116066	92116068	Access Cover	1	Ductile Iron 65-45-12	
8	93416003			93416014	93416016	93416008	Seal Assembly		1	Stainless Steel 304 & EPDM	
9	93706003			93706004	93706006	93706008	Access Cover Gasket		1	Buna-N or Neoprene	
10	93722000			93722000	N/A	N/A	Bumpstop Assembly		1	Stainless Steel UNS S31600 & EPDM	
	N/A			N/A	93722000	N/A			2		
	N/A			N/A	N/A	93722000			3		
11	93916006								Pushrod Guide	1	Acetal
12	93916066								Reset Shaft	1	Brass UNS C36000
13	94106066								Reset Housing	1	Brass UNS C36000
14	94356006								Reset Knob	1	Aluminum 6061
15	94506003			94506004	94506016	94506008	Lever		1	Stainless Steel UNS S17400	
16	95006412			94006412	95006410	95006410	Striker		1	Aluminum Bronze C95400	
17	95106006								Piston	1	Stainless Steel CF8M
18	95276006								Diaphragm	1	EPDM & Polyester
19	95306267			N/A	N/A	N/A	Retaining Ring, ⅜" Shaft, Lever Pin		2	Stainless Steel 15-7 or 17-7	
	N/A			95306267	N/A	N/A	Retaining Ring, ½" Shaft, Lever Pin				
	N/A			N/A	95306269	N/A	Retaining Ring, ⅝" Shaft, Lever Pin				
	N/A			N/A	N/A	95316408	Retaining Ring, ¾" Shaft, Lever Pin				
20	95306268			N/A	N/A	N/A	Retaining Ring, ⅝" Shaft, Hinge Pin		2	Stainless Steel 15-7 or 17-7	
	N/A			95306267	95306267	N/A	Retaining Ring, ½" Shaft, Hinge Pin				
	N/A			N/A	N/A	95316408	Retaining Ring, ¾" Shaft, Hinge Pin				
21	95406007								O-Ring, Reset Housing ID	1	Buna-N
22	95406024								O-Ring, Reset Housing & Pushrod Guide OD	2	Buna-N
23	95406407								O-Ring, Pushrod Guide ID	1	Buna-N
24	95406410			95406409	95436126	95406413	O-Ring, Upper Seat		1	Buna-N	
25	95406411			95406420	95446226	95406412	O-Ring, Lower Seat		1	Buna-N	
26	95506006								Pushrod	1	Stainless Steel UNS S30300
27	95606114								Socket Head Screw, ¼"-20 x ⅝"	6	Steel
28	95606127								Flat Head Socket Cap Screw ⅜"-16 x ¾"	1	Steel
29	95606133			N/A	N/A	N/A	Socket Head Screw #6-32 x ½"		1	Stainless Steel 18-8	
	N/A			95606130	95606130	95606130	Socket Head Screw #10-32 x 1"			Stainless Steel UNS S31600	
30	96016003			96016014	96016016	96016008	Seat		1	Stainless Steel CF8M	
31	96206003			N/A	N/A	N/A	Hinge Pin		1	Stainless Steel UNS S30400	
	N/A			96216086	9216086	96206008				Stainless Steel UNS S21800	
32	96216003			N/A	N/A	N/A	Lever Pin		1	Stainless Steel UNS S17400	
	N/A			96216044	96216047	96216008				Stainless Steel UNS S21800	
33	96310003			96906904	96906904	96310008	Clapper Spacer		2	Teflon or Acetal	
34	96406003			N/A	N/A	N/A	Lever Spring		1	Stainless Steel UNS S30400	
	N/A			96406004	96406005	96406008				Stainless Steel UNS S31600	
35	96406906								Piston/ Reset Spring	2	Stainless Steel UNS S31600
36	96906112			N/A	N/A	N/A	Spring Lock Washer, #6		1	Stainless Steel 18-8	
	N/A			96906111	96906111	96906111	Spring Lock Washer, #10			Stainless Steel UNS S31600	
37	95606140			N/A	N/A	N/A	Flat Head Socket Cap Screw ¼"-20 x ½"		2	Stainless Steel 18-8	
	N/A			95606139	N/A	N/A				Stainless Steel UNS S31600	
	N/A			N/A	N/A	95606135	Flat Head Socket Cap Screw ½"-13 x ¾"			Stainless Steel UNS S31600	
38	98604402								Plug, ½" NPT	1	Steel
39	94616921								Knob Caution Label (Not Shown)	1	Polystyrene
40	91556922								Ball Chain, 1/8" (Not Shown) (Length is in Inches)	6	Nickel Plated Brass
41	91556923								Clamping Link, Ball Chain (Not Shown)	1	
42	6999993406								O-Ring Grease, Dupont™ Krytox® GPL-205	A/R	Krytox®